



# RYS COMMODORE'S INVITATIONAL REGATTA

4 - 6 JULY 2022  
COWES

ORGANISING AUTHORITY:  
ROYAL YACHT SQUADRON

## SAILING INSTRUCTIONS

*The notation '[DP]' in a rule in the Sailing Instructions means that the penalty for a breach of that rule may, at the discretion of the protest committee, be less than disqualification.*

### 1. RULES AND REGULATIONS

The regatta will be governed by:

- 1.1 The rules as defined in the Racing Rules of Sailing (RRS).
- 1.2 The Notices to Mariners for the Ports of [Southampton](#), [Portsmouth](#) and [Cowes](#).

### 2. CHANGES TO SAILING INSTRUCTIONS

- 2.1 Any change to the Sailing Instructions (SIs) made ashore will be posted by 0900 on the day it will take effect, except that any change to the schedule of races will be posted by 2000 on the day before it will take effect.
- 2.2 Changes to a Sailing Instruction may be made on the water using VHF Radio to communicate with competitors.

### 3. COMMUNICATIONS WITH COMPETITORS

- 3.1 Notices to competitors will be posted on the Official Notice Board (ONB).
- 3.2 The ONB will be online at [www.rys.org.uk](http://www.rys.org.uk).
- 3.3 The Race Office is in the Royal Yacht Squadron (RYS).
- 3.4 The Race Committee intends to broadcast race information and course information by VHF Ch 77.
- 3.5 Competitors wishing to communicate with the Race Committee should do so on VHF Ch 77.
- 3.6 The Race Committee intends to announce approximate location of the committee boat at least 1 hour before the first warning signal on both VHF and WhatsApp.

### 4. CODE OF CONDUCT

- 4.1 Competitors and support persons shall comply with reasonable requests from race officials.

### 5. SIGNALS MADE ASHORE AND AFLOAT

- 5.1 Signals made ashore will be displayed at the RYS Lodge Flagstaff.
- 5.2 When flag AP is displayed ashore, "1 minute" is replaced by "not less than 45 minutes". This changes Race Signals AP.

- 5.3 To alert boats that a race or sequence of races will begin soon, an orange flag will be displayed with one sound signal five (5) minutes before a warning signal is displayed.


### 6. SCHEDULE

- 6.1 The Race Committee intends to run six (6) races during the two days of the regatta as shown in the table below but may alter the schedule of races to cater for adverse weather conditions.
- 6.2 All times are UTC plus 1 hour (British Summer Time).
- 6.3 The Race Committee **may** also run a passage race back to finish on the RYS line at the end of each days racing.
- 6.4 There will be no warning signal after 1530 on the last day of racing.
- 6.5 Schedule

Date	Event	Time
Mon 4 July	Registration in RYS.	0900 – 1700
	Skipper Briefing in RYS.	1830
	Opening Reception & Supper in RYS.	1900
Tue 5 July <i>HW Portsmouth 1640 – 4.2m</i>	Daily Briefing in RYS. Free Practice Session First Warning Signal	0830 0930 1125
	Warning Signals for Races 2, 3 & passage race home.	ASAP after each race.
	Supper in RYS.	1930
Wed 6 July <i>HW Portsmouth 1730 - 4.2m</i>	Daily Briefing in RYS. First Warning Signal.	0830 1025
	Warning Signals for Races 5, 6 & passage race home.	ASAP after each race.
	Prizegiving	1700

### 7. CLASS FLAGS

- 7.1 The class flag will be:

Class Flag	ICOS Flag J 
------------	--

### 8. RACING AREA

- 8.1 Racing will take place from a Committee Vessel in the Central or Eastern Solent. The approximate location of the Committee Vessel will be announced on VHF Channel 77.

### 9. COURSES

- 9.1 The format for racing will be windward/leeward. See Addendum A.
- 9.2 The diagrams in Addendum A of these Sailing Instructions show the courses, the order in which the marks are to be passed, and the side on which each mark is to be left.
- 9.3 The course to be sailed will be designated by displaying a letter and number from the Committee Vessel no later than the Warning Signal.

9.4 In the event that the Race Committee decide to run a passage race back to the RYS, the course will be announced over VHF Radio CH 77 using the Solent Two Character Codes in Addendum B of these SIs.

## 10. MARKS

- 10.1 With reference to Addendum A, marks 1, 1a, 4s & 4p will be orange inflatable marks.
- 10.2 With reference to gate marks 4p/4s, if only one gate mark is in position, that mark shall be rounded to port.
- 10.3 The starting marks will be a Committee Vessel displaying an Orange Flag and a White Pillar Buoy with Orange Flag.
- 10.4 The finishing marks for windward leeward courses will be a Committee Vessel displaying a Blue Flag and a White Pillar Buoy with Orange Flag.
- 10.5 The finishing marks for passage races will be between the RYS Main Flagstaff and an Orange Inflatable Buoy approximately 500m north of the RYS Main Flagstaff.

## 11. OBSTRUCTIONS

- 11.1 Boats shall not anchor or kedge in the Cowes Harbour fairway or within the area denoting power cables and gas pipes between Stone Point and Gurnard Bay, as shown on Admiralty Chart 2040, or within the mining ground area north east of Ryde Sand.
- 11.2 All boats shall comply with Associated British Ports Notice to Mariners No 08 of 2022 giving details of a [Precautionary Area and Moving Prohibited Zone \(MPZ\)](#). The MPZ shall rank as an obstruction for the purposes of RRS 19 and 20.
- 11.3 Whilst racing, boats shall pass to the north of the Cowes Breakwater.

## 12. THE START

- 12.1 Races will be started by using RRS 26 with the Warning Signal made 5 minutes before the Starting Signal.
- 12.2 The starting line will be between a staff displaying an orange flag on the Committee Vessel at the starboard end and the course side of the port-end starting mark.
- 12.3 If any part of a boat's hull is on the course side of the starting line at her starting signal and she is identified, the Race Committee will attempt to broadcast her sail number on VHF CH 77 after Flag X has been displayed, but not sooner than 30 seconds after the start. Delay or failure to do so is not grounds for redress. This changes RRS 62.1(a).

## 13. CHANGE OF THE NEXT LEG OF THE COURSE

- 13.1 When a change the next leg of the course has been signalled, the Race Committee will lay a new mark (or move the finishing line) and remove the original mark as soon as practicable. When in a subsequent change a new mark is replaced, it will be replaced by an original mark.
- 13.2 The position of any mark(s) may be adjusted by up to plus or minus 10 degrees relative to previous location and up to approximately 200 metres to windward or leeward without signalling Flag C, a direction signal, a length signal or a sound signal. This changes RRS 33.

## 14. THE FINISH

- 14.1 The finish line for Windward Leeward Courses will be between a staff displaying a blue flag on the Committee Signal Vessel and the course side of the port-end finishing mark.

14.2 The RYS Finishing Line for the "Round the Cans" races will be between the RYS Main Flagstaff and an Orange Inflatable Buoy approximately 500m north of the RYS Main Flagstaff.

## 15. PENALTY SYSTEM

- 15.1 RRS 44.1 is changed so that a boat may take a One-Turn Penalty when she may have broken one or more rules of Part 2 or rule 31 in an incident while racing.

## 16. TIME LIMITS

- 16.1 The following time limits will apply.
- (a) Mark 1 Time Limit. The time limit for the first boat to pass Mark 1 is 30 minutes.
- (b) Race Time Limit. The time limit for the first boat to sail the course and finish is 60 minutes.
- (c) Finishing Window. The time limit for boats to finish after the first boat sails the course and finishes is 20 minutes.
- 16.2 If no boat has passed Mark 1 within the Mark 1 Time Limit, or if no boat has finished within the Race Time Limit, the race shall be abandoned.
- 16.3 Boats still sailing more than 30 minutes after the first boat finishes shall be awarded the points for the place behind the last boat, which has finished the race within this time.

## 17. HEARING REQUESTS

- 17.1 Hearing forms will be available at the Race Office. Protest and requests for redress or reopening shall be delivered to the Race Office within the protest time limit. Contact mobile phone numbers should be included on the protest form.
- 17.2 The protest limit is 90 minutes after the last boat has finished the last race of the day or the Race Committee signals no more racing today, whichever is later.
- 17.3 Notices will be posted no later than 30 minutes after the protest time limit to inform competitors of the hearings in which they are parties or named as witnesses. Hearings will be held in the protest room located at the RYS.
- 17.4 Notices of Protests by the Race Committee, Technical Committee or Protest Committee will be posted to inform boats under RRS 61.1(B).
- 17.5 On the last scheduled day of racing a request for redress based on a protest committee decision shall be delivered no later than 30 minutes after the decision was posted. This changes RRS 62.2.

## 18. SCORING

- 18.1 The low points scoring system will apply and an overall points series will be run, and prizes will be awarded to the first three boats.
- 18.2 One completed race is required to constitute a series.
- 18.3 When one to four (1-4) races have been completed a boat's series score shall be the total of her race scores.
- 18.4 When five (5) or more races are completed a boat's series score shall be the total of her race scores excluding her worst score.

## 19. SAFETY REGULATIONS

- 19.1 [DP] A boat that retires from a race shall notify the Race Committee as soon as possible on VHF Ch 77 or by hailing an official Regatta support boat or rib.

**20. REPLACEMENT OF CREW OR EQUIPMENT**

- 20.1 Substitution of competitors is not allowed without the prior written permission of the Race Committee.
- 20.2 Substitution of damaged or lost equipment is not allowed unless authorised in writing by the Race Committee. Requests for substitution shall be made to the committee at the first reasonable opportunity, which may be after the race.

**21. EQUIPMENT AND MEASUREMENT CHECKS**

- 21.1 A boat or equipment may be inspected at any time for compliance with the Class Rules and Sailing Instructions.

**22. SUPPLIED BOATS**

- 22.1 All boats will be supplied by the Organising Authority and will conform to the J70 Class rules.
- 22.2 Competitors shall not modify their boats or cause them to be modified except that:
- A compass may be tied or taped to the hull or spars.
  - Wind indicators including yarn or thread may be taped or tied anywhere on the boat.
  - Adhesive tape can be used anywhere on the boat above the water line.

**23. OFFICIAL VESSELS**

- 23.1 The Committee Vessel (Signal Vessel) will be blue hulled motor catamaran Call Sign "Castle Two".
- 23.2 Mark laying vessels will be RYS Ribs.

**24. SUPPORT TEAMS**

- 24.1 *[DP]* Team leaders, coaches and other support personnel must stay outside areas where boats are racing from the time of the preparatory signal for each start thereafter until all boats have finished or retired or the Race Committee signals a postponement, general recall or abandonment.
- 24.2 *[DP]* All support boats shall carry marine VHF radios and agree to assist the Race Committee if directed to do so.

**25. TRASH DISPOSAL**

- 25.1 Trash may be placed aboard official or support vessels.

**26. BERTHING**

- 26.1 Event berthing is in [Shepards Wharf Marina](#).

**27. HAUL OUT RESTRICTIONS**

- 27.1 *[DP]* All boats shall be afloat by 1730 the day before the first race.
- 27.2 *[DP]* Boats shall not be hauled out during the Event except with and according to the terms of prior written permission of the race committee.

**28. DIVING EQUIPMENT AND PLASTIC POOLS**

- 28.1 *[DP]* Underwater breathing apparatus and plastic pools or their equivalent shall not be used around competing boats between the preparatory signal of the first race and the end of the event.
- 28.2 *[DP]* No person shall undertake any swimming, underwater or diving activities of any kind within the harbour without a valid permit to dive from the Cowes Harbour Master or the manager of the marina you wish to dive at. This

prohibited activity is legislated under Cowes Harbour Commission [General Direction 4.4](#).

- 28.3 *[DP]* Keelboats shall not be cleaned below the waterline by any means between the preparatory signal of the first race and the end of the event

**29. PRIZES**

- 29.1 Prizes will be awarded to the first three boats in the series.
- 29.2 Prizegiving will be held in the RYS as soon as possible after the last race has been completed and after any protest hearings.

**30. RISK STATEMENT**

- 30.1 Rule 3 of the Racing Rules of Sailing states: "The responsibility for a boat's decision to participate in a race or to continue racing is hers alone."
- 30.2 Sailing is by its nature an unpredictable sport and therefore involves an element of risk. By taking part in the event, each competitor agrees and acknowledges that:
- They are aware of the inherent element of risk involved in the sport and accept responsibility for the exposure of themselves, their crew and their boat to such inherent risk whilst taking part in the event;
  - They are responsible for the safety of themselves, their crew, their boat and their other property whether afloat or ashore;
  - They accept responsibility for any injury, damage or loss to the extent caused by their own actions or omissions;
  - Their boat is in good order, equipped to sail in the event and they are fit to participate;
  - The provision of a race management team, patrol boats, and other officials and volunteers by the event organiser does not relieve them of their own responsibilities;
  - The provision of patrol boat cover is limited to such assistance, particularly in extreme weather conditions, as can be practically provided in the circumstances;
  - It is their responsibility to familiarise themselves with any risks specific to this venue or this event drawn to their attention in any rules and information produced for the venue or event and to attend any competitor or safety briefing held for the event;
  - They are responsible for ensuring that their boat is equipped and seaworthy so as to be able to face extremes of weather; that there is a crew sufficient in number, experience and fitness to withstand such weather; and that the safety equipment is properly maintained, stowed and in date and is familiar to the crew.

**31. INSURANCE**

- 31.1 Each participating boat is required to hold insurance cover and in particular to hold adequate insurance against third party claims of at least £3 million. Boats chartered from the RYS and RTYC will comply with this requirement.

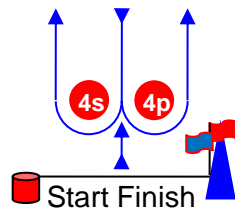
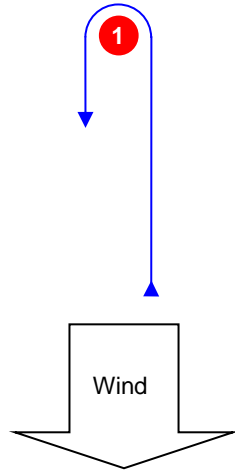
\*\*\*\*\*

**ADDENDUM A**

**Course Illustrations – Windward Leeward**

Boats at one end of the starting line and finishing lines. (Colour of flags in this diagram are for illustration)

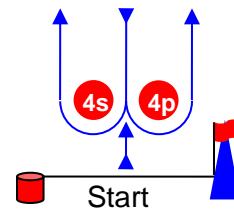
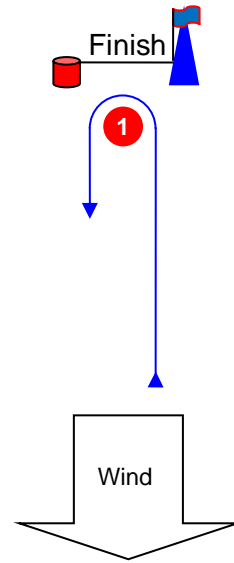
**L**



**Course: Leeward finish**

Signal	Mark Rounding Order
<b>L2</b>	Start – 1 – 4s/4p – 1 – Finish
<b>L3</b>	Start – 1 – 4s/4p – 1 – 4s/4p – 1 – Finish
<b>L4</b>	Start – 1 – 4s/4p – 1 – 4s/4p – 1 – 4s/4p – 1 – Finish

**W**

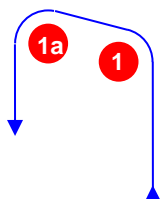


**Course: Windward Finish**

Signal	Mark Rounding Order
<b>W2</b>	Start – 1 – 4s/4p – Finish
<b>W3</b>	Start – 1 – 4s/4p – 1 – 4s/4p – Finish
<b>W4</b>	Start – 1 – 4s/4p – 1 – 4s/4p – 1 – 4s/4p – Finish

**LA / WA**

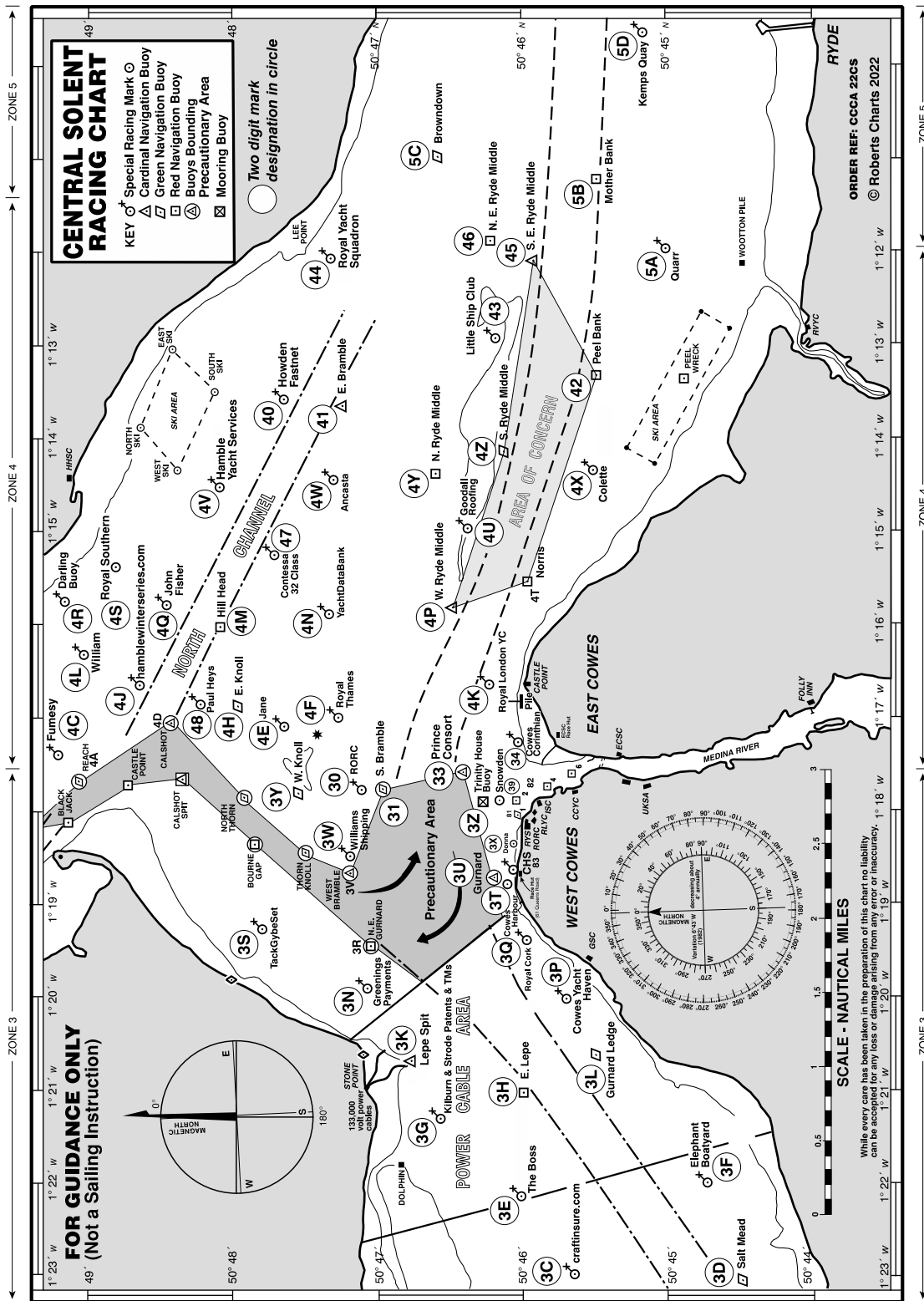
**Course: Windward/leeward with offset mark 1a**



Signal	Mark Rounding Order
<b>LA2</b>	Start – 1 – 1a – 4s/4p – 1 – 1a – Finish
<b>LA3</b>	Start – 1 – 1a – 4s/4p – 1 – 1a – 4s/4p – 1 – 1a – Finish
<b>LA4</b>	Start – 1 – 1a – 4s/4p – 1 – 1a – 4s/4p – 1 – 1a – 4s/4p – 1 – 1a – Finish
<b>WA2</b>	Start – 1 – 1a – 4s/4p – Finish
<b>WA3</b>	Start – 1 – 1a – 4s/4p – 1 – 1a – 4s/4p – Finish
<b>WA4</b>	Start – 1 – 1a – 4s/4p – 1 – 1a – 4s/4p – 1 – 1a – 4s/4p – Finish

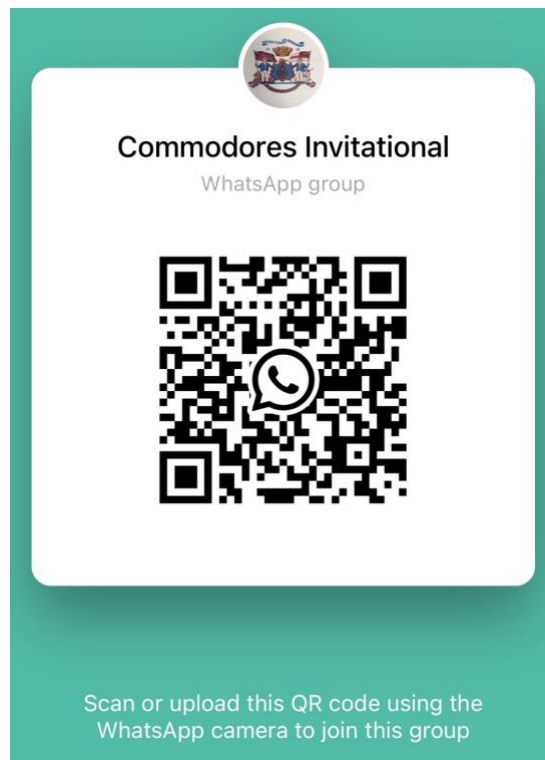
**ADDENDUM B**

See below a chartlet of the Racing Area showing the Solent Two Character Codes for racing “around the cans”:



## ADDENDUM C

We have set up an official WhatsApp group for receiving general information from the Race Office and Race Committee. To join the WhatsApp group please use the below QR Code:



### Instructions on using QR codes:

- For Apple phones: Please open your camera app and point it at the QR code and then follow the link it displays on your screen.
- For Android phones: Please obtain a barcode scanning app from the Google Play Store such as "Barcode Scanner", open the barcode scanning app and point it at the QR code and then follow the link it displays on your screen.