

# Cowes Clubs & Classes Association



[www.cowesharbourcommission.co.uk](http://www.cowesharbourcommission.co.uk)  
[regattaguru.com/cowes](http://regattaguru.com/cowes)  
TeamApp - Cowes



# COWES HARBOUR COMMISSION

**The Friendly Team for all  
your Marine Needs**



## COWES HARBOUR SHEPARD'S MARINA

DRY SAILING · EVENTS · MOORINGS

## COWES HARBOUR SERVICES

MOORINGS · BOATYARD · STORAGE · FUEL · COMMERCIAL

**Harbour Office, Town Quay, Cowes  
Isle of Wight, PO31 7AS**

**01983 293952** | [chc@cowes.co.uk](mailto:chc@cowes.co.uk)  
[cowesharbourcommission.co.uk](http://cowesharbourcommission.co.uk)

### ANNUAL PUBLIC MEETING

**Date: Thursday, 23rd May 2019**

[cowesharbourcommission.co.uk/events](http://cowesharbourcommission.co.uk/events)

### SEE COWES LOCAL NOTICES TO MARINERS ONLINE

**Key Notice: Safety of Navigation within Cowes Harbour**

[cowesharbourcommission.co.uk/local\\_notices\\_to\\_mariners](http://cowesharbourcommission.co.uk/local_notices_to_mariners)

HARBOUR  
OFFICE

SHEPARD'S  
MARINA

FUEL BERTH

RIVER MEDINA



COWES  
HARBOUR  
SERVICES



## Cowes Clubs and Classes Association

Welcome to the 2019 season! As always, racing at Cowes evolves to take into account your feedback and the changing environment that we race in. Changes this year include new start times based on requests from the classes and we hope these will make it easier for you to manage all your other weekend commitments. Look out for the new safety recommendation on safety knives, designed to ensure you can cut crew free from entangling ropes in emergencies. Also this year, in response to incidents which have caused a danger to shipping, please note the new sailing instruction 9.2 which requires you to notify the race committee of any collisions with navigation buoys. Related to this, there are certain navigation buoys, such as Norris, which we are no longer permitted to use as rounding marks but I'm sure your skilled race committees will ensure that we still have great courses!

Thanks to the CCCA team of Bob Milner, Jo Chugg and Marc Giraudon as well as all of your club and class representatives for arranging this schedule of races. Thanks also to the many race committee members who tirelessly give their time to run these races for us, both on and off the water, whatever the weather. I have the greatest respect for anyone bouncing around in a RIB in a force 5 laying marks for us!

Fair winds and fair sailing!

Giles Peckham  
Chairman, CCCA

### Cowes Clubs and Classes Association

Year of Establishment – 2010

**Chairman** Giles Peckham  
**Address** 17 Castle Road  
Cowes  
Isle of Wight PO31 7QZ  
**Telephone** 07785 278 478  
**Email** 3giles@gmail.com

**Hon Secretary** Robert Milner  
**Address** 7E Queens Road  
Cowes  
Isle of Wight PO31 9BQ  
**Telephone** 07774 851 911  
**Email** bob@cowes.org

**Hon Treasurer** Jo Chugg  
**Address** 14 Motspur Park  
New Malden  
Surrey KT3 6PN  
**Telephone** 07940 434 612  
**Email** jo.chugg@tiscali.co.uk

**Committee Member** Marc Giraudon  
**Telephone** 07770 914250  
**Email** marc.giraudon@gmail.com

**General Committee Members:** Representatives of all Cowes Clubs and Classes.  
**Postal Address:** c/o Island Sailing Club, 70 High Street, Cowes, Isle of Wight PO31 7RE

*CCCA Prizegiving will be held on **Saturday 28 September** at 6.30 pm at RORC Cowes*

2019



Organised by  
THE ROYAL LONDON YACHT CLUB



RORC



Royal Thames YC



Royal Victoria YC



Cowes Corinthian YC



Island SC

Cowes Classics Week

27 July - 2 August

# Cowes Classics Week

Now in its 12th year, the biggest  
regatta of its type in the world

**27 July - 2 August**

Social events every evening  
at the Cowes Yacht Clubs

[cowesclassicsweek.org](http://cowesclassicsweek.org)



#### SPONSORS

Classic Boat Magazine  
Kendalls Fine Art  
Clare Lallows

Zhik  
Roberts Charts  
Cowes Harbour Commission

Robert Oatley  
Mary Rose Gin  
Wight Crystal



## Part 2 Sailing Instructions 2019



### Schedule of Cowes Keelboat Race Warning Signal Times

Fleet	Class	Saturday		Class	Sunday
1	In Etchells CB Race 1 *	1255 plus 2 races ASAP	<i>Shore line courses will be texted and announced on VHF from approx 30 minutes before the class warning signal time.</i>	Int Etchells CB Race 1 *	1055 plus 2 races ASAP
2	RS Elite Race 1	1400. Race 2 ASAP		XOD	1110
3	Daring	1410		RS Elite Race 1	1125. Race 2 1225 or ASAP
4	International Dragon	1420		Daring	1210
5	XOD	1425		International Dragon	1220
6	Sonar	1440		Sonar	1240

\* Etchells on weekends 7/8 & 21/22 September only

ASAP: As soon as possible after the previous race

KYC committee boat weekends in **bold** - all classes 2 races/day

### 2019 Cowes Keelboat Fixtures

HW: High Water Portsmouth to nearest 5 min

Month	Date	HW		Event	Line
May	Sat 4	1210			
May	Sun 5	1240	Royal London YC	Cowes Solent Series	RLYC Shoreline
<b>May</b>	<b>Sat 11</b>	<b>1730</b>	<b>Royal Yacht Squadron</b>	<b>Cowes Keelboat Championship 1</b>	<b>Committee Boat</b>
<b>May</b>	<b>Sun 12</b>	<b>0550</b>			
May	Sat 18	1140	Cowes Corinthian YC	Cowes Solent Series	RORC Shoreline
May	Sun 19	1225			
<b>May</b>	<b>Sat 25</b>	<b>1700</b>	<b>Royal Thames YC</b>	<b>Cowes Keelboat Championship 2</b>	<b>Committee Boat</b>
<b>May</b>	<b>Sun 26</b>	<b>1750</b>		<b>XOD Milford Haven Trophy</b>	
June	Sat 1	1100	Island Sailing Club	Cowes Solent Series	ISC Shoreline
June	Sun 2	1135			
June	Sat 8	1620	RORC Cowes	Cowes Solent Series	RORC Shoreline
June	Sun 9	1725			
June	Sat 15	1035	RORC Cowes	Cowes Solent Series	RORC Shoreline
June	Sun 16	1125			
June	Sat 22	1555	Royal London YC	Cowes Solent Series ( <i>Except Darings</i> )	RLYC Shoreline
June	Sun 23	1630			
June	Sat 22	1555	Royal London YC	Daring Class Stug Perry Trophy	Committee Boat: 3 races/day
June	Sun 23	1630			
<b>Saturday June 29</b>					
			<i>Island Sailing Club</i>	<i>Round-the-Island Race</i>	
July	Sat 6	1510		Cowes Solent Series	
July	Sun 7	1610	Royal Thames YC	Daring Cory Cup Dragon Alfred Gallin	RLYC Shoreline
<b>July</b>	<b>Sat 13</b>	<b>0925</b>	<b>Island Sailing Club</b>	<b>Cowes Keelboat Championship 3</b>	<b>Committee Boat</b>
<b>July</b>	<b>Sun 14</b>	<b>1025</b>			
July	Sat 20	1450	Island Sailing Club	Cowes Solent Series	ISC Shoreline
July	Sun 21	1525			
<b>July</b>	<b>Sat 27</b>	<b>0730</b>	<b>RORC Cowes</b>	<b>Cowes Keelboat Championship 4</b>	<b>Committee Boat</b>
<b>July</b>	<b>Sun 28</b>	<b>0845</b>		<b>XOD Telegraph Bowl</b>	
<b>Monday July 29 - Friday Aug 2</b>					
			<i>RLYC with CCYC, ISC, RORC, RTYC &amp; RVYC</i>	<i>Cowes Classics Week</i>	<i>Separate Sailing Instructions</i>
<b>Aug Sat 3</b>					
			<i>RORC</i>	<i>Start of Rolex Fastnet Race</i>	
Aug	Sat 3	1355	Household Division YC	Annual Regatta - Cowes Solent Series	RLYC Shoreline
Aug	Sun 4	1450	Royal Yacht Squadron	Cowes Solent Series	RYS Shoreline
<b>Saturday Aug 10 - Saturday 17</b>					
			<i>Cowes Week Limited</i>	<i>Lendy Cowes Week</i>	
<b>Aug 24 - 26</b>					
			<i>Cowes Corinthian YC</i>	<i>Daring Class and Dayboat Bank Holiday Regatta</i>	
Aug	Sat 31	1250		Cowes Solent Series	
Sep	Sun 1	1335	Cowes Corinthian YC	XOD Zenobia Trophy	RORC Shoreline
<b>Sep</b>	<b>Sat 7</b>	<b>1855</b>	<b>Royal London YC</b>	<b>Cowes Keelboat Championship 5</b>	<b>Committee Boat</b>
<b>Sep</b>	<b>Sun 8</b>	<b>0740</b>		<b>All Classes: David Christie Memorial Trophy</b>	
Sep	Sat 14	1240	Royal Thames YC	Cowes Solent Series	RLYC Shoreline
Sep	Sun 15	1315		Daring 50th Decanters	
<b>Sep</b>	<b>Sat 21</b>	<b>1640</b>	<b>Cowes Corinthian YC</b>	<b>Cowes Keelboat Championship 6</b>	<b>Committee Boat</b>
<b>Sep</b>	<b>Sun 22</b>	<b>1740</b>		<b>XOD Zephyr Cup</b>	
Sep	Sat 28	1145	Royal Yacht Squadron	Cowes Solent Series	RYS Shoreline
Sep	Sun 29	1225			
Oct	5 - 6	1715 - 1810	Royal Yacht Squadron	Daring Roddy Carritt October Series. WS 1210	Committee Boat - 2 races/day
Oct	12 - 13	1140 - 1215	Royal Yacht Squadron	Daring WS: 1210 each day	RYS Shoreline - 2 races/day
Oct	19 - 20	1520 - 1610	Royal London YC	Daring WS: 1210 each day	RLYC Shoreline - 2 races/day
Oct	26 - 27	1040 - 1020	Royal London YC	Daring WS: Sat at 1210. Sun at 1110	RLYC Shoreline - 2 races/day

# Part 1 Sailing Instructions for Regattas at Cowes 2019

## 1. Rules

- 1.1 Racing will be governed by the rules as defined in *The Racing Rules of Sailing* (RRS). Parts 2 and 3 are sailing instructions as applicable. Appendix 1 concerns sailing instructions applicable to committee boat starts. The diagrams are illustrations and not sailing instructions.
- 1.2 Changing RRS 90.3(a), a race shall not be scored unless two or more boats start.
- 1.3 Boats shall not carry anchors that protrude over the bow nor outboards that extend beyond the transom.
- 1.4 Boats may use any method of propulsion in accordance with RRS 42.3(h) in an emergency to keep clear of a ship. Such use shall be reported to the race committee within the protest time limit.
- 1.5 If it appears to the race committee, or any appropriate authority, that a boat is failing to comply with SI 10.1, 10.4 or 10.6 it may order that boat to take a tow and the boat shall comply with that order. When taken in tow the boat shall retire. Nothing in SI 1.4 and 1.5 reduces or relieves the obligation of a boat to comply with the collision regulations or ABP Notice to Mariners No 14 of 2019.

## 2. Notices and Communication with Competitors

- 2.1 Notices to competitors will be posted on the official notice board at the host club.
- 2.2 The race committee may use VHF to broadcast information such as safety issues, signals made ashore, the location of the committee boat, time checks before the first warning signal, courses and the description of laid marks, bow or sail numbers of boats recalled, change of course and oral alterations to sailing instructions made before the warning signal, or during the race if it concerns the time limit, all in accordance with RRS 90.2(c).
- 2.3 If no other channel is specified, VHF **Channel M1 (37A)** will be used for all days with shore line starts and **Channel 77** will be used for days with committee boat starts. Boats should keep a radio watch from 30 minutes before the start and throughout the race.
- 2.4 Neither failure by a boat to receive nor hear such VHF transmissions will be grounds for redress. This changes RRS 60.1(b) and 62.1(a).

## 3. Changes to Sailing Instructions

Any change to the sailing instructions made ashore will be posted by 0900 on the day it will take effect, except any changes to the schedule of races will be posted by 2000 on the day before it will take effect.

## 4. Signals Made Ashore

- 4.1 Signals made ashore will be displayed at the host club flagstaff.
- 4.2 Flag AP over AP with two sound signals means racing is postponed and boats are requested not to leave the harbour. This adds to Race Signals. The warning signal of the first class to start will be made not less than **45 minutes** after one AP is removed with one sound.
- 4.3 When flag Y is displayed ashore, RRS 40 applies at all times while afloat. Personal Flotation Devices shall be clearly visible to other boats and the race committee. This changes the Part 4 preamble.
- 4.4 If, due to tide and wind conditions, the race for any class is to be started off the Shraper, class flag over S will be displayed from the host club flagstaff. The race will start from the Shraper using a laid inflated mark or a yellow, red or green fixed buoy as the ODM of the start line as defined on the designated VHF channel. The other end will be a staff bearing an orange flag on a RIB or launch. Starts from the Shraper will be by radio only, changing RRS 25, 26, 27, 29 and 30 and Race Signals.

## 5. Schedule of Races

Schedules of races and warning signal times are shown in Part 2 or in any addendum.

## 6. Class Flags

The following Code (IC) or Naval Numeral (NN) warning flags apply unless flags with class insignias are used instead:

IRC Rated Class	IC flag 1*	Handicap Class	IC flag A*	Etchells	IC flag E
Contessa 32	IC flag G	Daring	IC flag O	Dragon	IC flag D
Flying 15	NN pen 6	RS Elite	NN pen 4	Sonar	IC flag T
Sigma 33	IC flag E	Sigma 38	NN pen 1	XOD	IC flag W
Squib	NN flag 9	J/70	IC flag J	J/80	IC flag H

## 7. Racing Area

The Solent.

## 8. The Course

The course for each class shore line start will be announced on VHF **Channel M1 (37A)** from up to approximately 30 minutes before the class warning signal, and will use the 2 digit identifiers and the required side to leave each mark. The course may also be sent by text and will include a 'P' for port and 'S' for starboard as the required side to leave (L) or round (R) the mark. Changing RRS 62.1(a), the absence of, delay or the failure of text messages shall not be grounds for redress.

## 9. Marks

- 9.1 Marks will either be selected from the fixed navigation buoys and yellow racing marks listed in these sailing instructions or be laid marks as described in Appendix 1 Section D, or a combination of both.
- 9.2 Boats racing shall use all reasonable endeavours to avoid contact with navigation buoys, whether marks of the course or not. In the case of contact, whether or not leading to damage to the buoy, the circumstances of the incident and details of any damage shall be reported to the race committee within the protest time limit. RRS 31 and 44 shall remain in force. If the navigation buoy has been damaged the race committee may protest the boat. If a boat is forced by the actions of another boat to collide with a navigation buoy her only remedy is to protest.

## 10. Course Restrictions and Obstructions

- 10.1 Boats shall comply with Associated British Ports Notice to Mariners No 14 of 2019. The Moving Prohibited Zone in the Precautionary Area which shall rank as an obstruction for the purposes of RRS 19 and 20. Boats shall avoid close quarters with any commercial vessel noting SIs 1.4, 1.5, 10.4 and 10.6. Particular care should be taken when sailing in the Area of Concern.
- 10.2 Boats, in whatever direction they are racing, shall not pass:
- (i) north of the barrier off Durns Point, east of Lymington.
  - (ii) north of Horse Sand Fort
- 10.3 Boats shall not anchor or kedge in the Cowes harbour fairway and in the area between Stone Point and Gurnard Bay as indicated on the Central Solent Racing Chart in these sailing instructions and on Admiralty Chart 2040. Gas and water pipes, telephone and electricity cables carrying 133,000 volts lie on the sea bed.
- 10.4 Boats shall keep a good look out for ferries and commercial traffic, especially in the Area of Concern shown on the Central Solent Racing Chart in these sailing instructions.
- 10.5 The race committee may set courses that do not permit boats to sail rhumb line courses between marks, particularly over the central Solent Bramble Bank. This shall not be grounds for redress. This changes RRS 62.
- 10.6 Whilst racing boats shall always pass to the north of the Cowes breakwater.

## **11. The Start**

### **11.1 Starting Lines General**

The club start line in use is indicated in Part 2 and start lines are described in Part 3. Boats shall start by passing between the inner limit mark, if laid, and the Outer Distance Mark (ODM). If the ODM is further used as a mark of the course, it will be identified by the appropriate two-digit symbol or name and shall be left on the required side. If a red or green flag is displayed before the warning signal, boats shall start to the eastward or westward respectively.

### **11.2 Obstructing the Starting Line**

Boats whose warning signal has not been made shall keep clear of the start line and all other boats whose warning signal has been made.

### **11.3 Individual Recalls**

Sail numbers of individually recalled boats may be hailed or displayed from a committee boat and/or broadcast on VHF as soon as practical. Failure to hail, display or broadcast sail numbers shall not be grounds for redress. This changes RRS 62.1(a).

### **11.4 Late Starting**

A boat starting later than fifteen minutes after her starting signal will be scored DNS. This changes RRS A4.

## **12. The Finish**

The finish line in use by the host club is described in Part 3. The last mark of the course will be the designated finishing mark.

## **13. Penalty System**

Changing RRS 44.1, a boat may take a One-Turn Penalty when she may have broken a rule of Part 2 while racing. However, when she may have broken a rule of Part 2 while in the zone around a mark, other than a starting mark, her penalty shall be a Two-Turns Penalty.

## **14. Time Limit**

- 14.1** Unless otherwise amended in writing, or orally in accordance with SI 2.2, the single race a day time limit is 4 hours (2 hours when two races a day and 1.5 hours when more than 2 races a day are scheduled) and the day time limit is 1800 (1700 on the last day of a regatta), whichever is the earlier. Time limits may be altered in accordance with SI 2.2.
- 14.2** Changing RRS 35, the race committee may award a finishing position or DNF to any boat not finishing within 30 minutes (on corrected time if applicable) after the first boat finishes to enable further race(s) to be sailed or racing to be concluded.
- 14.3** Changing RRS 35, should no boat finish by the time limit, the result of the race may be determined from the previous time the start/finish line was crossed or the order of boats at a rounding mark or their position at the time limit.

## **15. RYA Arbitration, Protests and Requests for Redress**

- 15.1** Arbitration is described on the RYA website ([www.rya.org.uk](http://www.rya.org.uk)) under Rules Disputes. The exoneration penalty will be a 30% scoring penalty in accordance with RRS 44.3 (c). Arbitration, protests and requests for redress shall be delivered within 90 minutes (60 minutes on the last day of a regatta) of the time of the last boat to finish the last race of the day in her class.
- 15.2** Breaches of sailing instructions 4.3, 11.2, 11.4, 17 and 20 shall not be grounds for protest by a boat. This changes RRS 60.1(a). Penalties for these breaches and a breach of RRS 55 and RRS 40 while **not** racing, may be less than disqualification if the protest committee so decides. Any such penalties will be scored DPI.



## 16. Scoring

Scoring will be RRS Appendix A unless changed by the Notice of Race or by the class.

## 17. Retirements

Boats shall notify retirements to the race committee at the earliest opportunity. Boats may use VHF M1 (37A) for shore line and VHF channel 77 for committee boat races.

## 18. Results

Results will be posted on the club notice board or website as soon as practical after the last boat has finished.

## 19. Chartered Boats

Chartered or hired boats shall not be able to seek redress in the event of gear or equipment failure.

## 20. Support Boats

Support boats shall stay outside areas and extreme lay lines where boats are racing from the time of the preparatory signal for the first class to start until all boats have finished or the race committee signals an AP, 1<sup>st</sup> Substitute or flag N.

---

# Andrew Cassell Foundation



Enabling individuals with physical disabilities and impairments to race competitively in sailing on an equal level playing field with and against able bodied sailors, in an inclusive and equal environment in all classes.

For more information on opportunities to get involved whether able or disabled, sailing, on water support, shore based or make a donation, please contact the team at [info@acfsailing.org](mailto:info@acfsailing.org)

Scan with your phone  
to find out more;



Telephone No.: +44 (0) 7773 773320

Email Address: [info@acfsailing.org](mailto:info@acfsailing.org)  
Registered Charity No.: 1057742

Website: [www.acfsailing.org](http://www.acfsailing.org)

---

## Appendix 1

# COMMITTEE BOAT RACES

## **Additional Sailing Instructions**

- A. Change to a Shore Line Start:** If, due to weather conditions, racing is to be started from the relevant club shore line instead of a committee boat, flag C will be displayed from the host club flagstaff and one race only will be sailed unless otherwise announced on VHF **channel 77**.
- B. Starting Area and Order of Starting:** The starting area may be announced on VHF channel 77 and/or displayed at the Island Sailing Club using the two-digit code of a mark near to the committee boat location. Any subsequent race might not be started in the same order as the previous race. Any change in the order of starting will be indicated by signalling and/or announcing the fleet number or class name in the order of starting.
- C. The Course**
- C.1** Unless otherwise notified by VHF **channel 77**, the course may be signalled visually from the committee boat by the single code letter and a number shown on the section entitled '**Laid Courses**' regardless of the colour of the letter or number. If one or more fixed racing marks are to be used as part of a laid course, this will be announced on VHF. The course to be sailed, the number of rounds and the order of rounding is shown below each diagram. Leave all marks to port except at a gate, if laid. Marks shown in brackets ( ) may not be laid unless the designated symbol for spreader or gate, shown on the Laid Courses page, is displayed or announced with the course code letter/number. When a + or # symbol is displayed or announced boats shall finish on the required side of the committee boat. If no + or # symbol is displayed or announced, boat shall finish on the start/finish line (#).
- C.2** Alternatively, the course may be announced by VHF using two-digit identifiers from the list below and/or marks from the full list shown on another page. In the case of **far** or **near** laid windward marks the colour of these mark(s) will also be announced.
- D. Marks** will generally be specially laid inflated orange, red, yellow, black or yellow/black marks as described on VHF **channel 77**. If fixed or a combination of fixed and laid marks are to be used, the two-digit identifiers will be displayed or announced.
- E. Starting Alert:** To alert boats that a race will soon begin from the committee boat, an orange flag may be displayed with one sound five minutes before the warning signal. Between races IC flag AP may be displayed.
- F. Changing Course:** If a '# ' or '+ ' is displayed at a mark, boats shall proceed directly to the finish line from that mark. Changes may also be broadcast on VHF. This adds to RRS 33. Changing Race Signals flag 'C' and RRS 33, the position of any laid inflated mark be adjusted by up to approximately plus or minus 10 degrees relative to the previous laid mark(s) and up to approximately 300 metres to windward or leeward without signalling in accordance with RRS 33 (a) or (b).

## Laid Mark Two Digit Identifiers

9A	Windward Mark	9H	Outer Distance Mark
9B	Windward Spreader or Offset Mark	9J	Finish Mark
9C	Leeward Mark or Gate (above start line)	9K	Far Windward Spreader or Offset Mark
9D	Leeward Spreader or Offset Mark	9L	Far Windward Spreader or Offset Mark
9E	Leeward Mark or Gate (below start line)	9M	Near Windward Mark
9F	Middle Gate	9N	Near Windward Spreader or Offset Mark
9G	Wing Mark	9I	RYS Laid ODM Finishing Mark

## Laid Courses

The course to be sailed is shown below each course diagram.

Leave all marks to port unless indicated (S) to starboard in courses with gates.

# is Start / Finish Line. + is Finish Line.

Marks shown in brackets ( ) will not be laid unless the designated symbol is displayed as follows:

When displayed  means a Spreader or Offset Mark (1A) is laid.

When displayed  means the Leeward Mark is a gate.

When displayed  means finish the other side or ahead of the committee boat to the start line.

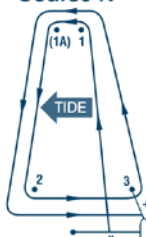
**Course A**



**A1** Start-1-(1A)-2(2S)-1

**A2** Start-1-(1A)-2(2S)-1-(1A)-2(2S)-1 (shown above)

**Course N**



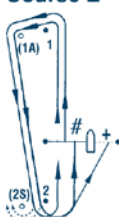
**N1** Start-1-(1A)-2-+

**N2** Start-1-(1A)-2-3-1-(1A)-2-+ (shown above)

**N3** Start-1-(1A)-2-3-1-(1A)-2-3-1-(1A)-2-+

Diagrams are  
not sailing  
instructions

**Course E**



**E1** Start-1-(1A)-2(2S)-# or +

**E2** Start-1-(1A)-2(2S)-1-(1A)-2(2S)-# or + (shown above)

**E3** Start-1-(1A)-2(2S)-1-(1A)-2(2S)-1-(1A)-2(2S)-# or +

Diagrams are  
not sailing  
instructions

**Course G**

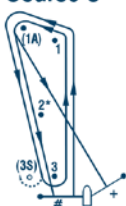


**G1** Start-1-(1A)-2(2S)-# or + (shown above)

**G2** Start-1-(1A)-2(2S)-#-1-(1A)-2(2S)-# or +

**G3** Start-1-(1A)-2(2S)-#-1-(1A)-2(2S)-#-1-(1A)-2(2S)-# or +

**Course U**



**U1** Start-1-1A-+ or #

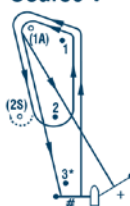
**U2** Start-1-(1A)-3(3S)-1-(1A)-+ or # (shown above)

**U3** Start-1-(1A)-3(3S)-1-(1A)-3(3S)-1-(1A)-+ or #

\*Mark 2, if laid, is not a mark of this course

Diagrams are  
not sailing  
instructions

**Course V**



**V1** Start-1-(1A)-+ or #

**V2** Start-1-(1A)-2(2S)-1-(1A)-+ or # (shown above)

**V3** Start-1-(1A)-2(2S)-1-(1A)-2(2S)-1-(1A)-+ or #

\*Mark 3, if laid, is not a mark of this course

ZONE 3

ZONE 4

ZONE 5

**FOR GUIDANCE ONLY**  
(Not a Sailing Instruction)



**CENTRAL SOLENT RACING CHART**

KEY

- ♣ Special Racing Mark
- ⊙ Cardinal Navigation Buoy
- ⊠ Green Navigation Buoy
- ⊡ Red Navigation Buoy
- ⊞ Buoy Bounding
- ⊞ Precautionary Area
- ⊞ Mooring Buoy

Two digit mark designation in circle

**ORDER REF: CCCA 19**  
© Roberts Charts 2019

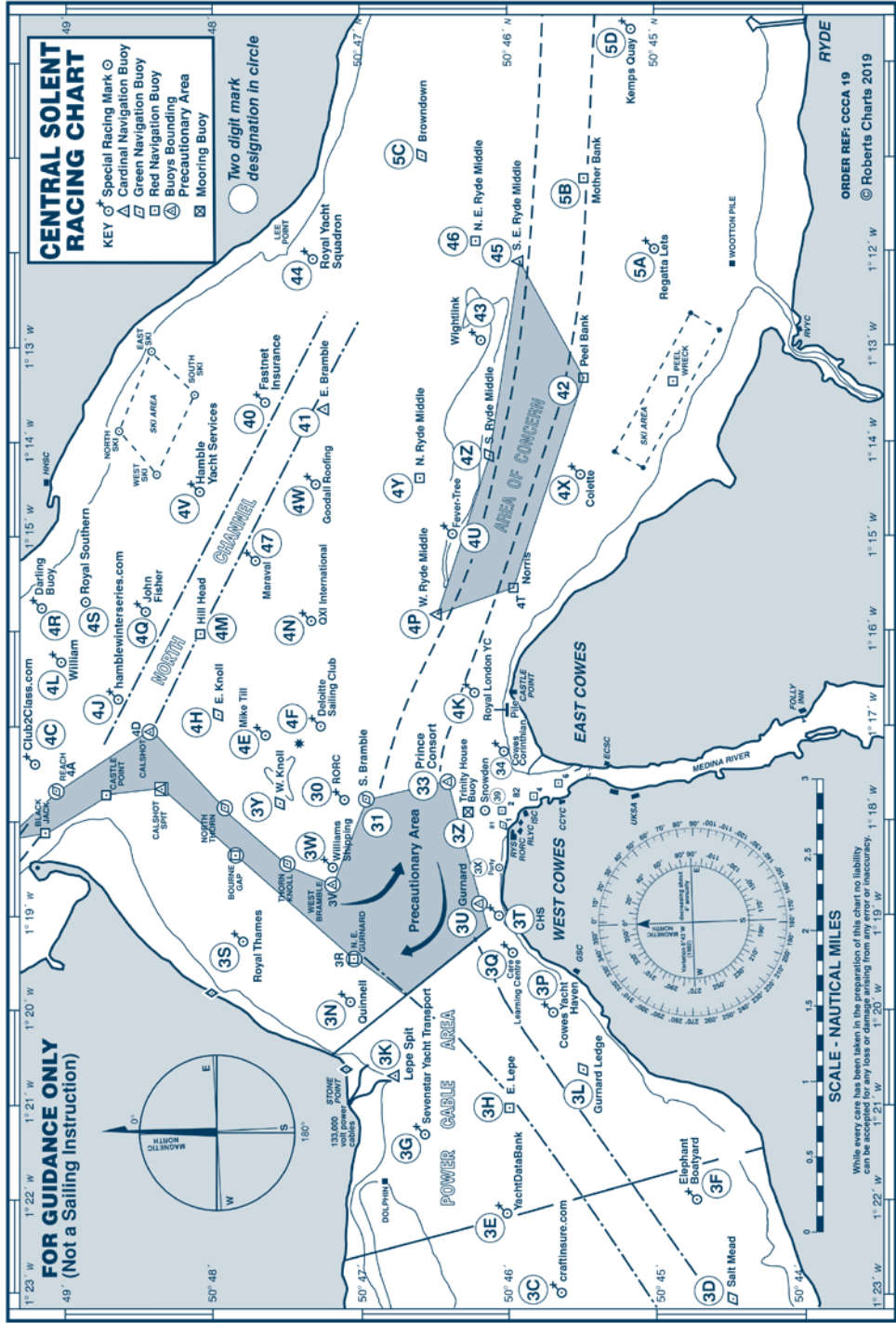
**SCALE - NAUTICAL MILES**

While every care has been taken in the preparation of this chart no liability can be accepted for any loss or damage arising from any error or inaccuracy.

ZONE 3

ZONE 4

ZONE 5



# Central Solent Course Mark Two Digit Identifiers 2019

3A	West Lepe	30	RORC	4V	Hamble Yacht Services
3B	NGR	31	South Bramble	4W	Goodall Roofing
3C	craftinsure.com	33	Prince Consort	4X	Colette
3D	Salt Mead	34	Cowes Corinthian	4Y	North Ryde Middle
3E	YachtDataBank	39	Snowden	4Z	South Ryde Middle
3F	Elephant Boatyard	4C	Club2Class.com	40	Fastnet Insurance
3G	Sevenstar Yacht Transport	4E	Mike Till	41	East Bramble
3H	East Lepe	4F	Deloitte Sailing Club	42	Peel Bank
3K	Lepe Spit	4H	East Knoll	43	Wightlink
3L	Gurnard Ledge	4J	hamblewinterseries.com	44	Royal Yacht Squadron
3N	Quinnell	4K	Royal London YC	45	S E Ryde Middle
3P	Cowes Yacht Haven	4L	William	46	N E Ryde Middle
3Q	Care Learning Centre	4M	Hillhead	47	Maraval
3S	Royal Thames	4N	QXI International	5A	Regatta Lets
3T	CHS	4P	West Ryde Middle	5B	Mother Bank
3U	Gurnard	4Q	John Fisher	5C	Browndown
3W	Williams Shipping	4R	Darling Buoy	5D	Kemps Quay
3X	Party	4S	Royal Southern	82	No 2 Cowes Harbour Buoy #
3Y	West Knoll	4T	Norris #	91	RYS ODM Finishing Mark
3Z	Trinity House Buoy	4U	Fever-Tree		

# May only be used as passing marks.  
Not for rounding



**regattaguru.com**  
*making regattas easier*

regattaguru.com is a complete regatta management package including:

*Document control*  
*Competitor communications*  
*Entry management*  
*Rating validation*  
*Race documentation*  
*Results*  
*Protest management*  
*Prizegiving script creation*

Contact Paul Miller to find out how  
regattaguru.com  
can help make your regatta easier  
and more fun!

[millerp@caribdata.co.uk](mailto:millerp@caribdata.co.uk)

**COWES**  **CORINTHIAN**  
**YACHT CLUB**

# FORTS RACE

**Sunday 1st September 2019**

Open to all dinghy classes, Cowes keelboats and yachts  
Prizes for all classes

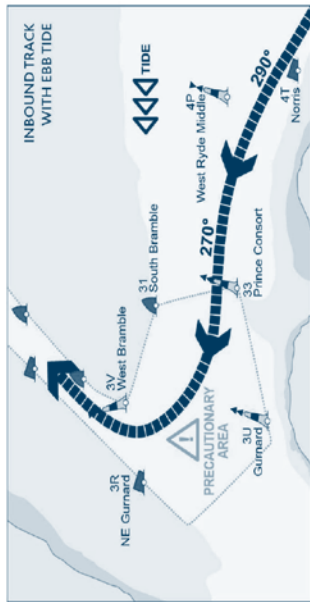
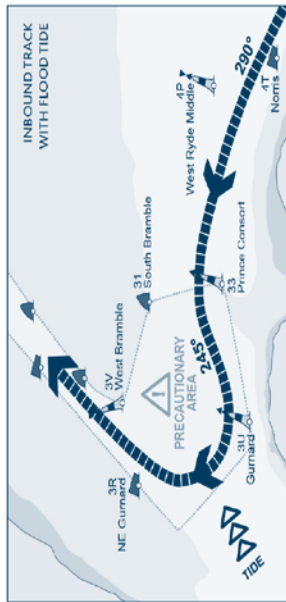
For more information go to

[www.ccy.org.uk](http://www.ccy.org.uk)

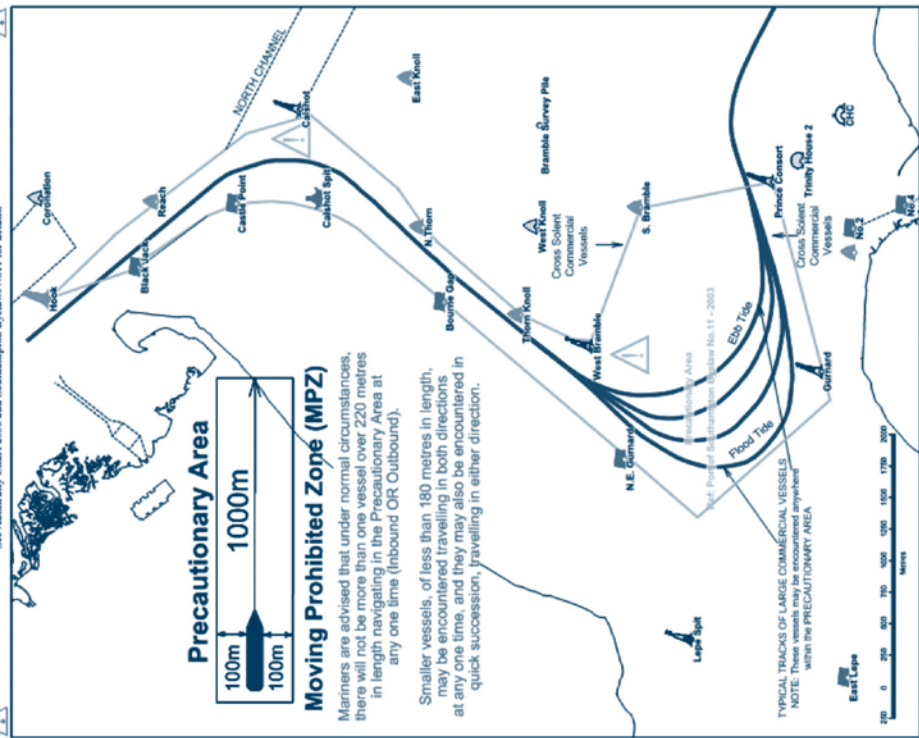
CCYC is a welcoming club with bar and facilities  
available to competing yachtsmen  
Sailors suppers are available after  
Tuesday evening racing and BBQs at many regattas.



# Ship Tracks in Precautionary Area



**PRECAUTIONARY AREA**  
 All vessels over 150 metres in length in the PRECAUTIONARY AREA will be a MOVING PROHIBITED ZONE of 1000 metres ahead and 100 metres to either side. Vessels under 20 metres in length will be prohibited from entering this ZONE.  
 See Admiralty Chart 2036 and Southampton Bylaws No.1 for details.



**Precautionary Area**  
 100m  
 1000m  
 100m

## Moving Prohibited Zone (MPZ)

Mariners are advised that under normal circumstances, there will not be more than one vessel over 220 metres in length navigating in the Precautionary Area at any one time (inbound OR Outbound).  
 Smaller vessels, of less than 180 metres in length, may be encountered travelling in both directions at any one time, and they may also be encountered in quick succession, travelling in either direction.

TYPICAL TRACKS OF LARGE COMMERCIAL VESSELS  
 NOTE: These vessels may be encountered anywhere within the PRECAUTIONARY AREA





# Cowes Chiropractic Clinic

*...help your body heal itself...*

## Therapies on offer include: McTimoney Chiropractic

Addiction Therapy & Counselling  
Remedial Massage  
Pregnancy Massage  
Chinese Acupuncture

24-26 Birmingham Road,  
Cowes, Isle of Wight  
PO31 7BH

**Mon - Friday**

9am - 6pm

**Saturday:**

9am - 2.30pm

Helping people  
of all ages since 2002

Call now to book an  
appointment or to arrange  
a free spine check:

01983 282810



**worldleisurewear.com**

113 High Street,  
Cowes, IOW, PO31 7AX

**POLOS - WOOL SWEATERS - JACKETS - BELTS - RUGBYS  
CUSHIONS - FLAGS - DODGERS - PLUS MUCH MORE**

We hold every Cowes yacht club logo on file for embroidery onto our huge range of quality clothing, in addition to hundreds of event, sponsor, and crew logos.

**Come and visit us at the entrance to Cowes Yacht Haven.**

Visit our website to see the huge range of services we offer at:  
**[www.worldleisurewear.com](http://www.worldleisurewear.com)**

**Tel. 01983 282823**

**Email. [info@worldleisurewear.com](mailto:info@worldleisurewear.com)**

# JOLLIFFES CHANDLERY

Brands in stock include:

**WAVELINE**

**Crewsaver®**



**Spinlock**

**HARKEN®**

**LEWMAR®**

**Cobra  
MARINE™**



**OCEAN SAFETY®**



**PLASTIMO**

Also, **JIB Boat Sales**  
your local yacht broker



**EVERYTHING FOR YOUR BOAT**

2-4 Birmingham Road, Cowes

**01983 290100**

[www.jolliffeschandlery.com](http://www.jolliffeschandlery.com)

[www.jibboatsales.co.uk](http://www.jibboatsales.co.uk)



## SCRA needs your support

The SCRA co-ordinates and represents individuals, yacht clubs, cruising associations and classes at a wide variety of forums to ensure that you can continue to enjoy sailing and cruising in the Solent. As you know this is one of the busiest waters in the world and at the time of increasing regulation it is important that the everyday sailor has a voice.

The SCRA has a new management team\* who are working to modernise the association and make better use of digital technology to keep members informed of its work and secure their views.

The more members that the association has, the greater influencing power the association has with the various authorities, especially port authorities. Therefore, for just £25 a year for personal membership you can help increase SCRA's influence as well as have your say, hear what is happening and receive The Solent Book and the e-poster. Full details together with a downloadable application form can be found on the website [www.scra.org.uk](http://www.scra.org.uk).

\* **President:** Jonathan Peel   **Chairman:** Lawrence Mead   **Hon Secretary:** Adrian Saunders  
**Hon Treasurer:** Peter Chugg   **Administrator:** Kristen Lloyd

## SOLENT RACING MARK CHANGES 2019

### There are new names for existing yellow race marks:

The 2-character codes and positions of these marks do not change, only the names are different.

Code	Name for 2019	Previous name
2A	Chewton Glen	Hurst
2K	Cowes Radio	1851 Trust
3E	YachtDataBank	Dick Johnson
3Q	Care Learning Centre	East Bay
3T	CHS	KMS
4C	Club2Class.com	Rigit UK Rigging
4G	Velociwrap Graphics	Cutter
4Q	John Fisher	Robin Culpan
5A	Regatta Lets	Quarr
5K	Suffolk Sails	Alfie

**Solent Cruising & Racing Association**  
Regatta House, 18 Bath Road Cowes Isle of Wight PO31 7QN  
Telephone: 01983 295744. Email: [admin@scra.org.uk](mailto:admin@scra.org.uk)

**[www.scra.org.uk](http://www.scra.org.uk)**

# MASTS, SPARS & RIGGING SPECIALISTS

EXPERIENCE, QUALITY AND PERFORMANCE



FREEPHONE

Office. +44(0) 808 281 9423

Servicing. 07593 220213

Email. sales@rigituk.com

www.rigituk.com

**SOUTHAMPTON OFFICE:** American Wharf, Elm Street, Marine Parade, Southampton SO14 5JF

**COWES OFFICE:** Shepard's Wharf Marina, Medina Rd. Cowes, Isle of Wight PO31 7HT



## TOIO

TOIO-COWES.CO.UK

TOIO is a new Italian brand of sailing garments and accessories that designs, manufactures and distributes sportswear and technical clothing for professional and sailing enthusiasts.

In spite of the young age of the brand, the management can count on over thirty years' experience on the market. The creator of TOIO is in fact the founder and for many years a major shareholder of SLAM, which he left in 2015.

**We provide a very personal and efficient service to all our customers:**

**Sailing gear - Sailing shoes and Accessories**

**Corporate and crew clothing - Embroidery service**

### **TOIO Shop -Cowes:**

LAY LINE LTD. The Corner House, Shooters hill, COWES - Isle of Wight -  
PO31 7BG

Tel. +44 1983 29 11 41 - email: shop@layline-cowes.co.uk

WWW.TOIO-COWES.CO.UK

THE  
**BOAT**  
SHOW

# Solent Two Digit Mark Codes 2019

## Zone 2 West Solent

ID	Name	Colour	Lat N	Long W
2A	Chewton Glen	Y	50 42.79	01 32.53
2B	Dunford	Y	50 43.38	01 31.54
2C	Colten	Y	50 43.83	01 30.86
2F	Berthon	Y	50 44.20	01 29.22
2H	"H"	Y	50 44.30	01 28.16
2J	Zwerver	Y	50 45.11	01 27.34
2K	Cowes Radio	Y	50 44.83	01 26.09
2R	Powder Byrne	Y	50 45.43	01 25.89
2T	Lymington Bank	R	50 43.10	01 30.85
2X	Solent Bank	R	50 44.23	01 27.37
20	Sconce	BY	50 42.53	01 31.43
21	Black Rock	G	50 42.57	01 30.59
22	Charles Stanley	Y	50 42.86	01 29.40
24	The English Summer Berry Co	Y	50 42.86	01 28.42
25	Caldwells Estate Agents	Y	50 43.15	01 27.49
26	Hamstead Ledge	G	50 43.87	01 26.18
27	Alitex	Y	50 42.97	01 28.16

## Zone 3 Mid Solent (W)

3A	West Lepe	R	50 45.24	01 24.09
3B	NGR	Y	50 44.36	01 23.80
3C	craftinsure.com	Y	50 45.64	01 23.12
3D	Salt Mead	G	50 44.51	01 23.04
3E	YachtDataBank	Y	50 46.13	01 22.19
3F	Elephant Boatyard	Y	50 44.72	01 21.95
3G	Sevenstar Yacht Transport	Y	50 46.58	01 21.46
3H	East Lepe	R	50 45.93	01 21.07
3K	Lepe Spit	YB	50 46.78	01 20.64
3L	Gurnard Ledge	G	50 45.51	01 20.59
3N	Quinnell	Y	50 47.07	01 19.88
3P	Cowes Yacht Haven	Y	50 45.68	01 19.98
3Q	Care Learning Centre	Y	50 45.97	01 19.45
3R	North East Gurnard	R	50 47.06	01 19.42
3S	Royal Thames	Y	50 47.81	01 19.25
3T	CHS	Y	50 46.10	01 18.87
3U	Gurnard	BY	50 46.22	01 18.84
3V	West Bramble #	YBY	50 47.20	01 18.65
3W	Williams Shipping	Y	50 47.20	01 18.55
3X	Party	Y	50 46.10	01 18.43
3Y	West Knoll	Y	50 47.43	01 17.84
3Z	Trinity House Buoy	Y	50 46.31	01 17.75
30	RORC	Y	50 47.12	01 17.72
31	South Bramble	G	50 46.98	01 17.72
33	Prince Consort	BY	50 46.41	01 17.56
34	Cowes Corinthian	Y	50 46.15	01 17.20
39	Snowden	Y	50 46.20	01 17.75

## Zone 4 Mid Solent (E)

4A	Reach #	G	50 49.05	01 17.65
4B	Coronation	Y	50 49.55	01 17.62
4C	Club2Class	Y	50 49.21	01 17.46
4D	Calshot #	BY	50 48.44	01 17.03
4E	Mike Till	Y	50 47.67	01 17.00
4F	Deloitte Sailing Club	Y	50 47.20	01 17.00
4G	Velociwrap Graphics	Y	50 49.45	01 16.91
4H	East Knoll	G	50 47.96	01 16.83
4J	hamblewinterseries.com	Y	50 48.63	01 16.65
4K	Royal London YC	Y	50 46.15	01 16.65
4L	William	Y	50 49.03	01 16.49
4M	Hill Head	R	50 48.07	01 16.00
4N	QXI International	Y	50 47.27	01 15.90

## Zone 4 Mid Solent (E continued)

ID	Name	Colour	Lat N	Long W
4P	West Ryde Middle	YBY	50 46.48	01 15.79
4Q	John Fisher	Y	50 48.46	01 15.72
4R	Darling Buoy	Y	50 49.18	01 15.71
4S	Royal Southern	Y	50 48.88	01 15.57
4T	Norris #	R	50 45.97	01 15.51
4U	Fever-Tree	Y	50 46.43	01 15.09
4V	Hamble Yacht Services	Y	50 48.13	01 14.64
4W	Goodall Roofing	Y	50 47.33	01 14.59
4X	Colette	Y	50 45.53	01 14.39
4Y	North Ryde Middle	R	50 46.61	01 14.31
4Z	South Ryde Middle	G	50 46.13	01 14.16
40	Fastnet Insurance	Y	50 47.66	01 13.65
41	East Bramble	BYB	50 47.23	01 13.64
42	Peel Bank	R	50 45.49	01 13.35
43	Wightlink	Y	50 46.16	01 13.09
44	Royal Yacht Squadron	Y	50 47.31	01 12.10
45	South East Ryde Middle	YB	50 45.93	01 12.10
46	North East Ryde Middle	R	50 46.21	01 11.88
47	Maraval	Y	50 47.70	01 15.25

## Zone 5 East Solent

5A	Regatta Lets	Y	50 45.03	01 11.89
5B	Mother Bank	R	50 45.49	01 11.21
5C	Brownstown	G	50 46.57	01 10.95
5D	Kemps Quay	Y	50 45.18	01 09.65
5E	Darling Associates Architects	Y	50 46.26	01 08.76
5F	North Sturbridge	BY	50 45.33	01 08.23
5G	RNC & RAYC	Y	50 46.42	01 07.90
5H	PSC Parhelion Racing Series	Y	50 46.82	01 07.35
5J	KB Dry Stack	Y	50 46.61	01 07.29
5K	Suffolk Sails	Y	50 47.08	01 06.78
5M	Gleeds	Y	50 46.11	01 06.52
5N	Mary Rose	Y	50 45.80	01 06.20

## Zone 6 Eastern Approaches

6A	No Man's Land Fort	B	50 44.40	01 05.70
6C	Warner	R	50 43.87	01 03.99
6E	West Princessa	YBY	50 40.16	01 03.65
6F	Bembridge Ledge Buoy	BYB	50 41.15	01 02.81
6R	Nab Tower	B	50 40.08	00 57.15

## Zone 8 Local Marks #

81	No 1 Cowes Harbour Buoy	G	50 46.07	01 18.04
82	No 2 Cowes Harbour Buoy	R	50 46.07	01 17.70

## Zone 9 Laid Marks

9A	Windward Laid Mark			
9B	Windward Spreader or Offset Mark			
9C	Leeward Laid Mark or Gate (above start line)			
9D	Leeward Spreader or Offset Mark			
9E	Leeward Laid Mark or Gate (below start line)			
9F	Middle Gate			
9G	Wing Mark			
9H	Outer Distance Mark			
9J	Finish Mark			
9K	Far Windward Mark			
9L	Far Windward Spreader or Offset Mark			
9M	Near Windward Mark			
9N	Near Windward Spreader or Offset Mark			
91	RYS Laid ODM Finishing Mark			

Cowes Clubs and Classes Association



# May only be used as passing marks. Not for rounding

## Start and Finish Lines

## Part 3 Sailing Instructions 2019



The **start line** is the extension of a line from a black and orange board on the RLYC Clubhouse in line with a similar board on The Parade wall. The ODM is **Snowden** (39).

No IDM will be laid but if No 2 harbour buoy is announced as part of the course, after the start boats shall pass the buoy on the required side.

The **finish line** is between the black and orange post on the RLYC clubhouse and either **Snowden** (39) or **Trinity House Buoy** (3Z) according to which is the designated finishing mark.

### Island Sailing Club Shore Line

The **start line** is the extension of a line through two flagstuffs each bearing a fluorescent orange board with a black cross. The ODM is **Trinity House Buoy** (3Z) The IDM, if laid, will be a black inflated buoy. If No 2 harbour buoy is announced as part of the course, after the start boats shall pass the buoy on the required side.

The **finish line** is between the ISC rooftop flagstaff and either **Snowden** (39) or **Trinity House Buoy** (3Z) according to which is the designated finishing mark in the course.

### RORC and Coves Corinthian YC Shore Line

The **start line** is the extension of a line from the RORC flagstaff through a vertical orange staff with triangle. The ODM is **Snowden** (39). No IDM will be laid but if No 2 harbour buoy is announced as part of the course, after the start boats shall pass the buoy on the required side.

The **finish line** is between the RORC flagstaff and either **Snowden** (39) or **Trinity House buoy** (3Z) according to which is the designated finishing mark in the course.

### Royal Yacht Squadron Shore Line

The **start line** is the extension of a line from a white line on the orange diamond on the Castle and the RYS flagstaff. The ODM is an orange inflated buoy (91). The IDM, if laid, will be a small orange buoy. If No 2 harbour buoy is announced as part of the course, after the start boats shall pass the buoy on the required side.

The **finish line** is between the RYS flagstaff and an orange buoy, about two cables northwards of the RYS flagstaff, announced or texted as RYS ODM finishing mark (91).

### Committee Boat Start and Finish Line

Coves Keelboat Championship Race No:  1  2  3  4  5  6 

The **start line** is between a staff bearing an orange flag on the main committee boat and an ODM which is the nearby navigation buoy or racing mark or inflated mark or a staff bearing an orange flag on a committee boat.

The **finish line** is between the staff or halyard displaying an orange flag on a committee boat and the ODM of the start or finish line or the last mark of the course.

ODM: Outer Distance Mark

IDM: Inner Distance Mark

# COWES UNITED

Available for racing, corporate days, coaching, and spectating.

Equipped to a high standard of comfort with heating, automatic windlass, viewing platform, B & G Electronics, wheelchair access, economic on fuel, maximum 18 knots.

Berthed at Trinity Landing in Cowes.

Contact: Jo Chugg on 07940 434612  
cowsunited@cowes.org



## Cowes United

*One of the best equipped committee boats in the Solent*

- The latest B&G wind speed and direction measuring instruments
- Current and ten-minute average wind readings making the wool-stick redundant!
- Fast anchoring and anchor retrieval
- High boat speed for committee boat re-positioning
- Built in race management sound making
- Optional flag halyards or flag mounted pole display
- Rapid course parameter display system
- AIS transponder for committee boat location monitoring
- GPS navigation display
- Modern domestic facilities for race committees

**Enquiries to: Jo Chugg 07910 434612**



**UKSA**

Sea. Change.

# Step onboard and Sea. Change.

UKSA offer transformational maritime opportunities through water-based experiences and education. We fulfil this as a youth charity and are the largest RYA centre of excellence in the world.

Whether you're new to the water, a maritime professional, or anything in between, UKSA can provide the training and support needed to help you achieve your ambitions.

- ▶ Yachting
- ▶ Watersports
- ▶ MCA training
- ▶ Recreation
- ▶ Schools & Groups
- ▶ Development Programmes

+44 (0)1983 294941  
**uksa.org**

