



**J70  
ELLEN MCARTHUR CANCER TRUST  
REGATTA  
05 MAY 2023**

**ORGANISING AUTHORITY  
ROYAL YACHT SQUADRON**

## NOTICE OF RACE

### 1. RULES

- 1.1 The *event* is governed by the rules as defined in the Racing Rules of Sailing (RRS).
- 1.2 Notices to Mariners for the Ports of [Southampton](#), [Portsmouth](#) and [Cowes](#) apply.

### 2. SAILING INSTRUCTIONS

- 2.1 The sailing instructions will be available on the Royal Yacht Squadron [RYS] website by 30 April. ([www.rys.org.uk](http://www.rys.org.uk))

### 3. COMMUNICATION

- 3.1 The Official Notice Board (ONB) will be online at ([www.rys.org.uk](http://www.rys.org.uk)) and the Race Office will be at the Royal Yacht Squadron (RYS).
- 3.2 All boats shall carry a Marine VHF Radio capable of receiving all normal International VHF Channels. All VHF communication shall be on International VHF channels.
- 3.3 On the water the Race Committee (RC) will make courtesy broadcasts to competitors on VHF radio. The channel will be stated in the SIs.

### 4. ELIGIBILITY AND ENTRY

- 4.1 The event is open to teams invited by the Ellen McArthur Cancer Trust (EMCT) in boats of the J70 Class.

### 5. FEES

- 5.1 Not Used.

### 6. CREW LIMITATIONS

- 6.1 A parental (or guardian) consent form and declaration, available on ([www.rys.org.uk](http://www.rys.org.uk)) shall be submitted for crew under 18 years of age.

### 7. ADVERTISING

- 7.1 Not used.

### 8. QUALIFYING SERIES AND FINAL SERIES

- 8.1 Not used.

### 9. SCHEDULE

- 9.1 The times shown in the table below are UTC plus 1 hour (British Summer Time - BST). Indicative Tide Times are for High Water (HW) Portsmouth.

DAY HWP (BST)	TIME	FIRST WARNING SIGNAL	NOTES
Thursday 4 May	1845 for 1930		Dinner at RYS
Friday 5 May	0830 0915 0930 HW 1200 4.4m	1055	Breakfast at RYS Briefing on Platform Boat familiarisation Leave RYS Haven
	As Reqd	Approx 1310	First warning signal Multiple short races Passage race to RYS
	1400 1430		Return to the Haven Lunch

### 10. EQUIPMENT INSPECTION

- 10.1 Not used.

### 11. CLOTHING AND EQUIPMENT

- 11.1 Not Used.

### 12. VENUE

- 12.1 Racing will take place from a Committee Vessel in the Solent.
- 12.2 To indicate the general race area a local racing chartlet can be found in Addendum A.

### 13. COURSES

- 13.1 The courses to be sailed will be a windward / leeward configuration as described in the Sailing Instructions. The final race of the day may be a race back to the RYS.

### 14. PENALTY SYSTEM

- 14.1 RRS 44.1 is changed so that the Two-Turns Penalty is replaced by the One-Turn Penalty.

### 15. SCORING

- 15.1 One (1) race is required to be completed to constitute a series.
- (a) When fewer than four (4) races have been completed, a boat's series score will be the total of her race scores.
- (b) When four (4) or more races have been completed, a boat's series score will be the total of her races excluding her worst score.

### 16. SUPPORT PERSON VESSELS

- 16.1 All support person vessels shall carry a marine VHF radio and comply with RRS 37 'Search and Rescue Instructions'.

**17. CHARTERED OR LOANED BOATS**

- 17.1 The event will be sailed in J70s supplied by the Organizing Authority (OA).

**18. BERTHING**

- 18.1 [DP] All boats shall be kept in their assigned places the RYS Haven.

**19. LAUNCHING AND HAUL OUT RESTRICTIONS**

- 19.1 Not used.

**20. DIVING EQUIPMENT AND PLASTIC POOLS**

- 20.1 Not Used

**21. DATA PROTECTION**

- 21.1 The personal information you provide to the Organising Authority will be used to facilitate your participation in the event. If you have agreed to be bound by the Racing Rules of Sailing and the other rules that govern the Events (the rules), the legal basis for processing that personal information is contract. If you are not bound by the rules, the legal basis for processing that personal information is legitimate interest. Your personal information will be stored and used in accordance with the Organising Authority's privacy policy. When required by the rules, personal information may be shared with the RYA, your national authority and/or World Sailing. The results of the event and the outcome of any hearing or appeal may be published.

- 21.2 Competitors automatically grant to the Organising Authority, without payment, the right in perpetuity to make, use and show any motion pictures, still pictures and live, taped or filmed television of or relating to the event provided that they do not infringe the privacy rights of participants.

- 21.3 The Royal Yacht Squadron (RYS) and Royal Yacht Squadron Limited (RYSL) Armorial, Burgees and all other associated logos shall not be used by any club or individual without the prior written permission of RYS.

**22. RISK STATEMENT**

- 22.1 Rule 3 of the Racing Rules of Sailing states: "The responsibility for a boat's decision to participate in a race or to continue racing is hers alone."
- 22.2 Sailing is by its nature an unpredictable sport and therefore inherently involves an element of risk. By taking part in the event, each competitor agrees and acknowledges that:
- (a) They are aware of the inherent element of risk involved in the sport and accept responsibility for the exposure of themselves, their crew and their boat to such inherent risk whilst taking part in the event;
  - (b) They are responsible for the safety of themselves, their crew, their boat and their other property whether afloat or ashore;
  - (c) They accept responsibility for any injury, damage or loss to the extent caused by their own actions or omissions;
  - (d) Their boat is in good order, equipped to sail in the event and they are fit to participate;
  - (e) The provision of a race management team, patrol boats, and other officials and volunteers by the event

organiser does not relieve them of their own responsibilities;

- (f) The provision of patrol boat cover is limited to such assistance, particularly in extreme weather conditions, as can be practically provided in the circumstances;
- (g) It is their responsibility to familiarize themselves with any risks specific to this venue or this event drawn to their attention in any rules and information produced for the venue or event and to attend any competitor or safety briefing held for the event.

**23. INSURANCE**

- 23.1 Each participating boat will be insured with valid third-party liability insurance with a minimum cover of £3 million per incident or the equivalent.

**24. PRIZES**

- 24.1 Trophies will be awarded to the first three boats in the series.

**25. FURTHER INFORMATION**

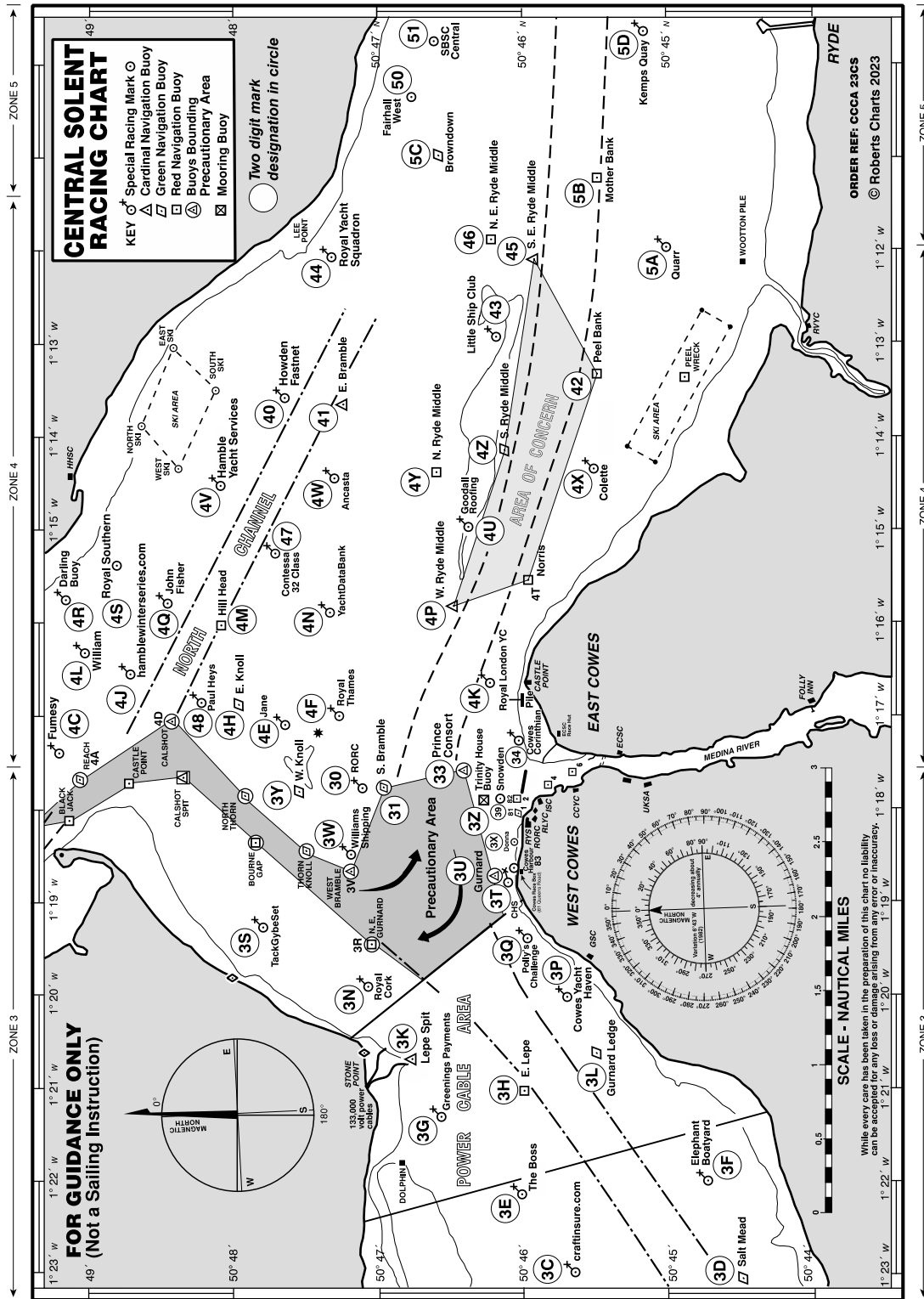
For further information please contact:

The Royal Yacht Squadron  
The Castle  
Cowes, UK, PO31 7QT  
Tel: +44 1983 292 191  
[mail@rys.org.uk](mailto:mail@rys.org.uk)

**NOTICE OF RACE ENDS**

**ADDENDUM A.**

See below a chartlet of the Racing Area showing the Solent Two Character Codes.



All correspondence should be directed to:

The Royal Yacht Squadron, The Castle, Cowes, UK, PO31 7QT. Tel: 01983 292191, Email: [mail@rys.org.uk](mailto:mail@rys.org.uk)