



QUARTER TON CUP 4 – 6 JUNE 2021

ORGANIZING AUTHORITY ROYAL YACHT SQUADRON

NOTICE OF RACE

The notation '[DP]' in a rule in the Notice of Race (NoR) means that the penalty for a breach of that rule may, at the discretion of the Protest Committee, be less than disqualification.

The notation '[NP]' in a rule of the Notice of Race means that a boat may not protest another boat for breaking that rule. This changes RRS 60.1(a).

1. RULES

- 1.1 The event is governed by the rules as defined in the Racing Rules of Sailing (RRS).
- 1.2 World Sailing Offshore Special Regulations for Inshore Racing (Appendix B) shall apply. [DP]
- 1.3 The Quarter Ton Class Rules.
- 1.4 Parts A, B and C of the IRC Rules shall apply. [DP]
- 1.5 Notices to Mariners for the Ports of [Southampton](#), [Portsmouth](#) and [Cowes](#). [DP]
- 1.6 All crews are required to follow all the latest Covid-19 guidance from NHS England and the Government. [DP]
- 1.7 All crews should also follow the latest [RYA Guidance on sailing & racing with participants from different households](#) during COVID-19 in England. [DP]

2. SAILING INSTRUCTIONS

- 2.1 The sailing instructions (SIs) will be available on the RYS website by 18 May 2021. www.rys.org.uk

3. COMMUNICATION

- 3.1 Notices to competitors will be posted on the Official Notice Board (ONB).
- 3.2 The ONB is located on the RYS website at: www.rys.org.uk. There is no physical ONB.
- 3.3 All boats shall carry a Marine VHF Radio capable of receiving all normal International VHF Channels. All VHF communication shall be on International VHF channels. [DP]

- 3.4 On the water the Race Committee will make courtesy broadcasts to competitors on VHF Radio. The channel used will be stated in the SIs.
- 3.5 Whilst racing (from the first Warning Signal until the end of the last race of the day), except in an emergency, a yacht shall not make voice or data transmissions nor receive voice or data communication that is not available to all boats. [DP]
- 3.6 In addition to VHF communication, the Race Committee intends using a "WhatsApp" group to communicate with Competitors and a "QR code" in Addendum C of this NoR is available with details of how to join. Failure to receive information broadcast using "WhatsApp" will not be grounds for redress.

4. ELIGIBILITY AND ENTRY

- 4.1 The event is open to boats of the Quarter Ton Class.
- 4.2 Eligible boats may enter by completing the online entry form on the RYS Website and paying the entry fee. www.rys.org.uk.
- 4.3 Any boat that wishes to be eligible for the Corinthian Prize shall submit a written statement to the Race Committee no later than 1800 on 3 June that all participating crew are amateurs. For the purposes of clarification, they should conform to the World Sailing Competitor Categorization description for Group 1. If no such statement is received, the boat shall not be eligible for the Corinthian Prize.
- 4.4 The skipper of each boat shall complete and submit an ['Event Personal Declaration Form'](#) in the 24 hours immediately prior to the event. This form is available on the ONB. Competitors who answer 'False' to any of the questions shall not take part in the event. Failure to comply with this requirement will result in boats being scored DNC.

5. FEES

- 5.1 The entry fee is £300 per boat and must be received before 28 May. This includes three days of racing but does not include berthing or social events.

6. CREW LIMITATIONS

- 6.1 There are no World Sailing Sailor Classification restrictions.

7. ADVERTISING

- 7.1 Advertising is permitted in accordance with Class Rules and World Sailing Regulation 20. [DP]
- 7.2 Boats may be required to display advertising chosen and supplied by the Organizing Authority. [DP]

8. QUALIFYING SERIES AND FINAL SERIES

- 8.1 Does not apply.

9. SCHEDULE OF RACING

- 9.1 The intention of the Race Committee is to run up to twelve (12) races over the three days of the Event.
- 9.2 The Race Committee intends to run four races each day, but additional races may be sailed in order to complete the

programme because of weather, or other reasons. Additional races will be advised by 0900 on the affected day.

- 9.3 On the last day of racing, no warning signal will be made after 1530.
- 9.4 Schedule:

DAY HWP (BST)	BRIEFING	FIRST WARNING SIGNAL	NOTES
Fri 4 June HW 0750 3.8m	0900	1025	VHF and WhatsApp Briefing. 1 st Warning Signal. Subsequent races asap after each race finish.
Sat 5 June HW 0850 3.8m	0900	1025	VHF and WhatsApp Briefing. 1 st Warning Signal. Subsequent races asap after each race finish.
Sun 6 June HW 0940 3.9m	0900	1025	VHF and WhatsApp Briefing. 1 st Warning Signal. Subsequent races asap after each race finish. Prizegiving in the RYS Pavilion ASAP after racing.

10. EQUIPMENT INSPECTION

- 10.1 Each boat shall be in possession of a valid endorsed IRC Rating Certificate.
- 10.2 There will be no official crew weigh-in. This changes Class Rule 5.
- 10.3 Boats may be inspected at any time.

11. CLOTHING AND EQUIPMENT

- 11.1 Does not apply.

12. VENUE

- 12.1 Racing will take place from a Committee Vessel in the Central and Eastern Solent.
- 12.2 The approximate position of the Committee Vessel will be announced by VHF Radio Ch 05 and on WhatsApp (see NoR 3.6 & Addendum C) using the Solent Two Character Codes.

13. COURSES

- 13.1 The format for racing will be Windward/Leeward courses. See Addendum A.
- 13.2 The Race Committee intend to run courses using laid marks.

- 13.3 A chartlet to help boats locate the position of the Committee Vessel using the Solent Two Character Codes is attached. See Addendum B.

14. PENALTY SYSTEM

- 14.1 RRS Rule 44.1 is changed so that the penalty for a boat breaking a rule in Part 2 shall be a One-Turn Penalty (1 tack and 1 gybe).

15. SCORING

- 15.1 Three races shall be completed to constitute a series.
- 15.2 When three (3) to five (5) races have been completed a boat's series score shall be the total of all her race scores.
- 15.3 When six (6) or more races have been completed, a boat's score will be the total of her race scores excluding her worst score.

16. SUPPORT PERSON VESSELS

- 16.1 All support vessels must carry a marine VHF radio and comply with RRS 37 'Search and rescue Instructions'. [DP]
- 16.2 Support boats shall stay outside areas where boats are racing from the time of the preparatory signal for each start thereafter until all boats have finished or retired or the Race Committee signals a postponement, general recall or abandonment. [DP]

17. CHARTERED OR LOANED BOATS

- 17.1 Does not apply.

18. BERTHING

- 18.1 Event berthing is the responsibility of each boat and is not included in the entry fee. Visiting boats may contact [Cowes Yacht Haven](#) or [Shepards Wharf Marina](#) for berthing reservations.

19. HAUL OUT RESTRICTIONS

- 19.1 All boats shall be afloat by 1800 the day before the first series race. [DP]
- 19.2 Boats shall not be hauled out during the Event except with and according to the terms of prior written permission of the Race Committee. [DP]

20. DIVING EQUIPMENT AND PLASTIC POOLS

- 20.1 Underwater breathing apparatus and plastic pools or their equivalent shall not be used around competing boats between the preparatory signal of the first race and the end of the event. [DP]
- 20.2 Keelboats shall not be cleaned below the waterline by any means between the preparatory signal of the first race and the end of the event. [DP]

21. DATA PROTECTION

- 21.1 The Royal Yacht Squadron, in compliance with the General Data Protection Regulations 2018 (GDPR), will use information provided by competitors for the purposes of

RYS event management only. This data will be held in compliance with the GDPR and will not be shared with any third parties or used for marketing purposes other than contacting competitors by email, post, SMS and telephone with information regarding this event or future events. Competitors will be required to provide their specific consent to this on their entry form.

21.2 Competitors automatically grant to the Organizing Authority, without payment, the right in perpetuity to make, use and show any motion pictures, still pictures and live, taped or filmed television of or relating to the event provided that they do not infringe the privacy rights of participants.

21.3 The Royal Yacht Squadron (RYS) and Royal Yacht Squadron Racing (RYSR) Armorial, Burgees and all other associated logos shall not be used by any club or individual without the prior written permission of the RYS. [DP]

22. RISK STATEMENT

22.1 Rule 3 of the Racing Rules of Sailing states: "The responsibility for a boat's decision to participate in a race or to continue racing is hers alone."

22.2 Sailing is by its nature an unpredictable sport and therefore involves an element of risk. By taking part in the event, each competitor agrees and acknowledges that:

- (a) They are aware of the inherent element of risk involved in the sport and accept responsibility for the exposure of themselves, their crew and their boat to such inherent risk whilst taking part in the event;
- (b) They are responsible for the safety of themselves, their crew, their boat and their other property whether afloat or ashore;
- (c) They accept responsibility for any injury, damage or loss to the extent caused by their own actions or omissions;
- (d) Their boat is in good order, equipped to sail in the event and they are fit to participate;
- (e) The provision of a race management team, patrol boats, and other officials and volunteers by the event organiser does not relieve them of their own responsibilities;
- (f) The provision of patrol boat cover is limited to such assistance, particularly in extreme weather conditions, as can be practically provided in the circumstances;
- (g) It is their responsibility to familiarize themselves with any risks specific to this venue or this event drawn to their attention in any rules and information produced for the venue or event and to attend any competitor or safety briefing held for the event;
- (h) They are responsible for ensuring that their boat is equipped and seaworthy so as to be able to face extremes of weather; that there is a crew sufficient in number, experience and fitness to withstand such weather; and that the safety equipment is properly maintained, stowed and in date and is familiar to the crew.

22.3 COVID Statement

- (a) By taking part in any of the events covered by this Notice of Race, each competitor agrees and acknowledges that they are responsible for complying with any national regulations in force from time to

time in respect of COVID-19 and for complying with the RYS COVID Safe procedures when on site.

- (b) The penalty for a breach of this rule may, at the discretion of the Protest Committee, be less than disqualification. Boats may not protest for breaches of this rule. This changes rule 60.1(a). (DP)

23. INSURANCE

23.1 Each participating boat shall be insured with valid third-party liability insurance with a minimum cover of £3 million per incident or the equivalent.

24. PRIZES

24.1 The event prize giving will be held at the Royal Yacht Squadron as soon as possible after the final day's racing and after any protest(s).

24.2 Prizes awarded as follows.

- (a) Quarter Ton Cup to the winner of the Open Division.
- (b) Corinthian Trophy to the winner of the Corinthian Division.
- (c) Roger Swinney Trophy for the highest placed boat that wins neither the Quarter Ton Cup nor the Corinthian Trophy and has a rating lower than **** (see NB below).
- (d) Other prizes will be awarded including: a prize to the boat with the highest combined age of the crew, lowest combined age of the crew, oldest Bowman, and Concours d'Elegance (as judged by the Race Committee)

25. FURTHER INFORMATION

25.1 Further information requests or completed entries should be sent to the address below.

**** NB. The maximum rating for the Roger Swinney Trophy will be set once the entries, and their ratings, are available.**

NOTICE OF RACE ENDS

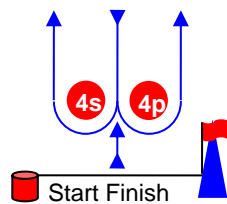
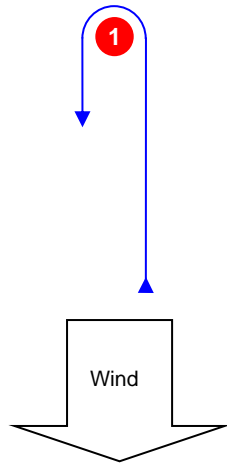
SOCIAL ARRANGEMENTS

Further details regarding social arrangements will be posted on the RYS Website as soon as they are confirmed and in line with any relaxation of Covid 19 lockdown restrictions.

ADDENDUM A

Course Illustrations – Windward Leeward

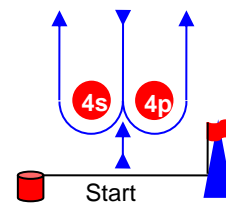
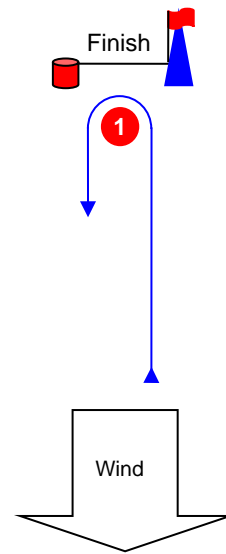
L



Course: Leeward finish

Signal	Mark Rounding Order
L2	Start – 1 – 4s/4p – 1 – Finish
L3	Start – 1 – 4s/4p – 1 – 4s/4p – 1 – Finish
L4	Start – 1 – 4s/4p – 1 – 4s/4p – 1 – 4s/4p – 1 – Finish

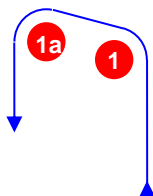
W



Course: Windward Finish

Signal	Mark Rounding Order
W2	Start – 1 – 4s/4p – Finish
W3	Start – 1 – 4s/4p – 1 – 4s/4p – Finish
W4	Start – 1 – 4s/4p – 1 – 4s/4p – 1 – 4s/4p – Finish

LA / WA

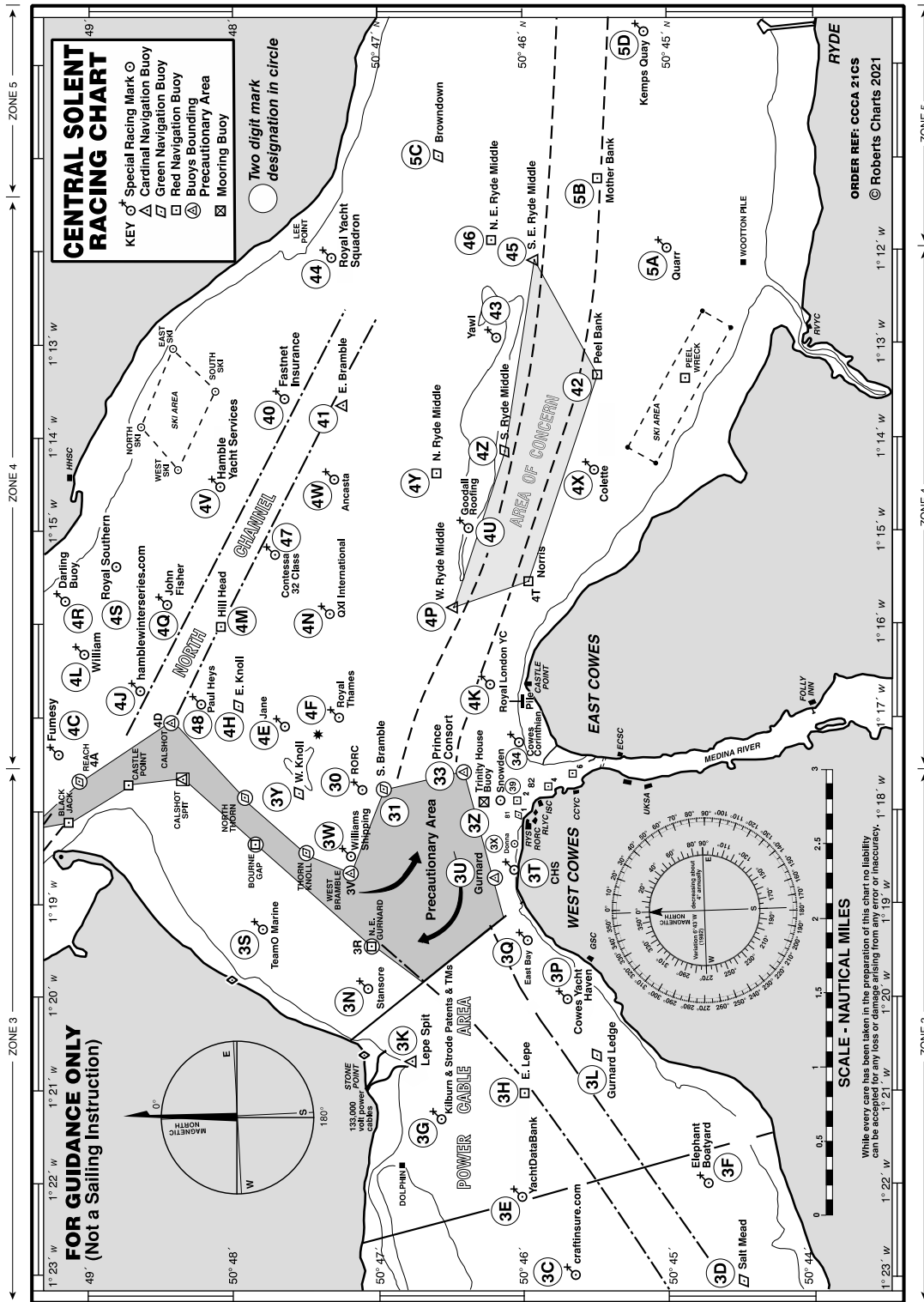


Course: Windward/leeward with offset mark 1a

Signal	Mark Rounding Order
LA2	Start – 1 – 1a – 4s/4p – 1 – 1a – Finish
LA3	Start – 1 – 1a – 4s/4p – 1 – 1a – 4s/4p – 1 – 1a – Finish
LA4	Start – 1 – 1a – 4s/4p – 1 – 1a – 4s/4p – 1 – 1a – 4s/4p – 1 – 1a – Finish
WA2	Start – 1 – 1a – 4s/4p – Finish
WA3	Start – 1 – 1a – 4s/4p – 1 – 1a – 4s/4p – Finish
WA4	Start – 1 – 1a – 4s/4p – 1 – 1a – 4s/4p – 1 – 1a – 4s/4p – Finish

ADDENDUM B

See below a chartlet of the Racing area and SCRA Two Character Codes for racing marks.



All correspondence should be directed to:

The Royal Yacht Squadron, The Castle, Cowes, UK, PO31 7QT. Tel: 01983 292191, Email: mail@rys.org.uk

ADDENDUM C

We have set up an official WhatsApp group for receiving general information from the Race Office. To join the WhatsApp group please use the below QR Code:



Instructions on using QR codes:

- For Apple phones: Please open your camera app and point it at the QR code and then follow the link it displays on your screen.
- For Android phones: Please obtain a barcode scanning app from the Google Play Store such as “Barcode Scanner”, open the barcode scanning app and point it at the QR code and then follow the link it displays on your screen.