



## PERFORMANCE 40 & CAPE 31 UK NATIONAL CHAMPIONSHIPS 2021

4 – 5 SEPTEMBER

COWES

ORGANISING AUTHORITY:  
ROYAL YACHT SQUADRON

## NOTICE OF RACE

*The notation '[DP]' in a rule in the Notice of Race (NoR) means that the penalty for a breach of that rule may, at the discretion of the Protest Committee, be less than disqualification.*

*The notation '[NP]' in a rule of the Notice of Race means that a boat may not protest another boat for breaking that rule. This changes RRS 60.1(a).*

### 1. RULES

- 1.1 The event will be governed by the rules as defined in The Racing Rules of Sailing (RRS).
- 1.2 World Sailing Offshore Special Regulations (Category 4) shall apply. <https://www.sailing.org/specialregs>
- 1.3 Rules of the Performance 40 Class (P40 Class) in Addendum A of this NoR shall apply to the P40 Division.
- 1.4 Rules of the UK Cape 31 One Design Class (Version 1.3) shall apply to the Cape 31 Division.
- 1.5 IRC Rules 2021 Parts A, B, and C shall apply, except that IRC rule 21.1.5 (d) & (e) shall not apply.
- 1.6 Notices to Mariners for the Ports of [Southampton](#), [Portsmouth](#) and [Cowes](#). [DP]
- 1.7 All crews are required to follow all the latest Covid-19 guidance from NHS England and the Government.

### 2. SAILING INSTRUCTIONS

- 2.1 Sailing Instructions (SIs) will be available on the RYS website at [www.rys.org.uk](http://www.rys.org.uk) by 1 September 2021.

### 3. COMMUNICATION

- 3.1 The online official noticeboard (ONB) is located on the RYS website at: [www.rys.org.uk](http://www.rys.org.uk).
- 3.2 All boats shall carry a Marine VHF Radio capable of receiving all normal International VHF Channels. All VHF

communication shall be on International VHF channels. [DP]

- 3.3 On the water the Race Committee will make courtesy broadcasts to competitors on VHF Radio. The channel used will be stated in the Sis.
- 3.4 Whilst racing (From the first Warning Signal until the end of the last race of the day), except in an emergency, a yacht shall not make voice or data transmissions nor receive voice or data transmissions that is not available to all boats. [DP]
- 3.5 The Race Committee intends using a "Whats App" group to communicate with Competitors and a "QR code" in Addendum C of this NOR is available with details of how to join. Failure to receive information broadcast using "Whats App" will not be grounds for redress.

### 4. ELIGIBILITY AND ENTRY

- 4.1 The event is open to all boats of the P40 and Cape 31 classes which have a valid IRC Rating Certificate.
- 4.2 Eligible boats may enter by completing the online entry form available at: [www.rys.org.uk](http://www.rys.org.uk).
- 4.3 To be considered an entry in the event, a boat shall complete all registration requirements and pay all fees.

### 5. FEES

- 5.1 The entry fee is £240 for P40's and £220 for Cape 31's.

### 6. CREW LIMITATIONS

- 6.1 P40 Class - There are no World Sailing Sailor Classification restrictions.
- 6.2 Cape31 Class – Limited to a maximum of three World Sailing Classification Category 3 sailors per boat.

### 7. ADVERTISING

- 7.1 Advertising is permitted in accordance with World Sailing Regulation 20. [DP]
- 7.2 Boats may be required to display advertising chosen and supplied by the Organizing Authority. [DP]

### 8. QUALIFYING SERIES AND FINAL SERIES

- 8.1 Does not apply.

### 9. SCHEDULE OF RACING

- 9.1 The Schedule of Racing is shown in the table below.
- 9.2 The Race Committee intends to run up to six (6) races as shown below.
- 9.3 No warning signal will be given after 1430 on the last scheduled day of racing.
- 9.4 Times in this NoR are for BST. Tide times are for Portsmouth.
- 9.5 Schedule overleaf:

All correspondence should be directed to:

The Royal Yacht Squadron, The Castle, Cowes, UK, PO31 7QT. Tel: 01983 292191, Email: [mail@rys.org.uk](mailto:mail@rys.org.uk)

Day	Event Time or First Warning Signal	Notes
Sat 5 Sept HW Ports 1050 BST 4.2m	0900	Time check and RO briefing by VHF.
	1025	Cape 31 Race 1 Warning Signal.
	1035	P40 Race 1 Warning Signal.  Races 2 & 3 asap after each finish.
Sun 6 Sept HW Ports 1130 BST 4.4m	0900	Time check and RO briefing by VHF.
	1025	Cape 31 Race 4 Warning Signal.
	1035	P40 Race 4 Warning Signal. Races 5 & 6 asap after finish.

## 10. EQUIPMENT INSPECTION

- 10.1 Each competing boat shall be in possession of a **Valid IRC Certificate**.
- 10.2 Boats may be inspected at any time.

## 11. CLOTHING AND EQUIPMENT

- 11.1 Does not apply.

## 12. VENUE

- 12.1 The venue for the event is Cowes on the Isle of Wight.
- 12.2 Racing will take place in the Solent and adjacent waters. See Addendum D – Solent Chartlet.

## 13. COURSES

- 13.1 Courses will be predominantly Windward/Leeward, and the format is shown in Addendum B.
- 13.2 The final race each day will be a “Round the Cans” race with courses announced over VHF using the Solent Cruising & Racing Association (SCRA) Two Character Codes with the Finish on the RYS Line. See Addendum D.
- 13.3 Marks used for windward leeward courses will be Orange or Black inflatable marks.

## 14. PENALTY SYSTEM

- 14.1 RRS 44.1 is changed so that the Two-Turns penalty is replaced by the One-Turn Penalty.

## 15. SCORING

- 15.1 The Low Point System of Appendix A will apply.
- 15.2 One (1) race shall be completed to constitute a series.
- 15.3 When one (1) to four (4) races have been completed a boats series score shall be the total of all her scores.

- 15.4 When five (5) or more races have been completed, a boat’s score will be the total of her race scores excluding her worst score.

## 16. SUPPORT PERSON VESSELS

- 16.1 All support boats shall carry marine VHF radios and agree to assist the Race Committee if directed to do so. *[DP]*

## 17. CHARTERED OR LOANED BOATS

- 17.1 Does not apply.

## 18. BERTHING

- 18.1 Does not apply.

## 19. HAUL OUT RESTRICTIONS

- 19.1 Boats shall be afloat by 1700 Friday 4 September 2021. *[DP]*
- 19.2 Boats shall not be hauled out until the end of the event except with and according to the terms of prior written permission of the race committee. *[DP]*

## 20. DIVING EQUIPMENT AND PLASTIC POOLS

- 20.1 Underwater breathing apparatus and plastic pools or their equivalent shall not be used around competing boats between the preparatory signal of the first race and the end of the event. *[DP]*
- 20.2 Keelboats shall not be cleaned below the waterline by any means between the preparatory signal of the first race and the end of the event. *[DP]*

## 21. DATA PROTECTION

- 21.1 The Royal Yacht Squadron, in compliance with the General Data Protection Regulations 2018 (GDPR), will use information provided by competitors for the purposes of RYS event management only. This data will be held in compliance with the GDPR and will not be shared with any third parties or used for marketing purposes other than contacting competitors by email, post, SMS and telephone with information regarding this event or future events. Competitors will be required to provide their specific consent to this on their entry form.
- 21.2 Competitors automatically grant to the Organizing Authority, without payment, the right in perpetuity to make, use and show any motion pictures, still pictures and live, taped or filmed television of or relating to the event provided that they do not infringe the privacy rights of participants.
- 21.3 The Royal Yacht Squadron (RYS) and Royal Yacht Squadron Racing (RYSR) Armorial, Burgees and all other associated logos shall not be used by any club or individual without the prior written permission of the RYS. *[DP]*

## 22. RISK STATEMENT

- 22.1 Rule 3 of the Racing Rules of Sailing states: “The responsibility for a boat’s decision to participate in a race or to continue racing is hers alone.”

22.2 Sailing is by its nature an unpredictable sport and therefore involves an element of risk. By taking part in the event, each competitor agrees and acknowledges that:

- (a) they are aware of the inherent element of risk involved in the sport and accept responsibility for the exposure of themselves, their crew and their boat to such inherent risk whilst taking part in the event;
- (b) they are responsible for the safety of themselves, their crew, their boat and their other property whether afloat or ashore;
- (c) they accept responsibility for any injury, damage or loss to the extent caused by their own actions or omissions;
- (d) their boat is in good order, equipped to sail in the event and they are fit to participate;
- (e) the provision of a race management team, patrol boats, and other officials and volunteers by the event organiser does not relieve them of their own responsibilities;
- (f) the provision of patrol boat cover is limited to such assistance, particularly in extreme weather conditions, as can be practicably provided in the circumstances;
- (g) it is their responsibility to familiarize themselves with any risks specific to this venue or this event drawn to their attention in any rules and information produced for the venue or event and to attend any safety briefing held for the event;
- (h) they are responsible for ensuring that their boat is equipped and seaworthy so as to be able to face extremes of weather; that there is a crew sufficient in number, experience and fitness to withstand such weather; and that the safety equipment is properly maintained, stowed and in date and is familiar to the crew.

### 22.3 COVID Statement

- (a) By taking part in any of the events covered by this Notice of Race, each competitor agrees and acknowledges that they are responsible for complying with any regulations in force from time to time in

respect of COVID-19 and for complying with the Royal Yacht Squadron COVID-19 procedures.

- (b) The penalty for a breach of this rule may, at the discretion of the Protest Committee, be less than disqualification. Boats may not protest for breaches of this rule. This changes rule 60.1(a). *(DP)*

### 23. INSURANCE

All entrants shall be covered by a minimum Third Party Liability indemnity of £3 million, or equivalent, and declare that such cover will be maintained in full force throughout the event.

### 24. PRIZES

- 24.1 The **Performance 40 National Championship Trophy** and the **Cape 31 National Championship Trophy** will be awarded to the boats with the best overall score in their relevant class.
- 24.2 Prizes may also be awarded to other boats.
- 24.3 Prizegiving will be held in the RYS as soon as possible after the last race has been completed and after any protest hearings.

### 25. FURTHER INFORMATION

- 25.1 Further information and entry forms will be available on the RYS website. [www.rys.org.uk](http://www.rys.org.uk)

**End of Notice of Race.**

### SOCIAL BOOKINGS

**There is an option for crew dinners in the RYS on the evening of Saturday 4<sup>th</sup> September.**

For those interested please refer to the Social Booking Form on the [RYS Website](http://www.rys.org.uk).

**ADDENDUM A****Performance 40 Class Rules**

1. A 'Performance 40' is a Cruiser/Racer around 40ft and will be defined by the below limitations, which utilises information from her IRC Certificate.
2. Also known as a P40, the intention is for this to be a mostly 'Corinthian' Class, where family and friends get a taste of Grand Prix style Racing.
3. For reference a Beneteau First 40 is at the bottom of the band and an XP44 is at the top of the band.
4. This includes, but is not limited to, J111's, J122's, J133's, J121, IMX40's, Grand Soleil 43's, Arcona 41's, JND 39's, Corby 41's, Mills 39's, Matt 12's, Farr 40's, King 40's, Azuree 46's etc.

**Class Limitations:**

<b>IRC Band:</b>	<b>1.075-1.150</b>
<b>IRC Certificate LH:</b>	<b>11.15m-14.1m</b>
<b>IRC Certificate DLR:</b>	<b>125-205</b>
<b>IRC Certificate Max Draft:</b>	<b>2.70m</b>

All correspondence should be directed to:

**The Royal Yacht Squadron**

The Castle, Cowes, UK, PO31 7QT. Tel: 01983 292191, Email: [mail@rys.org.uk](mailto:mail@rys.org.uk)

ADDENDUM B

**Course Illustrations – Windward Leeward**

Boats at one end of the starting line and finishing lines. (Colour of flags in this diagram are for illustration)

**L**

**Course: Leeward finish**

Signal	Mark Rounding Order
<b>L2</b>	Start – 1 – 4s/4p – 1 – Finish
<b>L3</b>	Start – 1 – 4s/4p – 1 – 4s/4p – 1 – Finish
<b>L4</b>	Start – 1 – 4s/4p – 1 – 4s/4p – 1 – 4s/4p – 1 – Finish

**W**

**Course: Windward Finish**

Signal	Mark Rounding Order
<b>W2</b>	Start – 1 – 4s/4p – Finish
<b>W3</b>	Start – 1 – 4s/4p – 1 – 4s/4p – Finish
<b>W4</b>	Start – 1 – 4s/4p – 1 – 4s/4p – 1 – 4s/4p – Finish

**LA / WA**

**Course: Windward/leeward with offset mark 1a**

Signal	Mark Rounding Order
<b>LA2</b>	Start – 1 – 1a – 4s/4p – 1 – 1a – Finish
<b>LA3</b>	Start – 1 – 1a – 4s/4p – 1 – 1a – 4s/4p – 1 – 1a – Finish
<b>LA4</b>	Start – 1 – 1a – 4s/4p – 1 – 1a – 4s/4p – 1 – 1a – 4s/4p – 1 – 1a – Finish
<b>WA2</b>	Start – 1 – 1a – 4s/4p – Finish
<b>WA3</b>	Start – 1 – 1a – 4s/4p – 1 – 1a – 4s/4p – Finish
<b>WA4</b>	Start – 1 – 1a – 4s/4p – 1 – 1a – 4s/4p – 1 – 1a – 4s/4p – Finish

## ADDENDUM C

We have set up an official WhatsApp group for receiving general information from the Race Office. To join the WhatsApp group please use the below QR Code:

# P40 Nationals

WhatsApp group



### Instructions on using QR codes:

- For Apple phones: Please open your camera app and point it at the QR code and then follow the link it displays on your screen.
- For Android phones: Please obtain a barcode scanning app from the Google Play Store such as “Barcode Scanner”, open the barcode scanning app and point it at the QR code and then follow the link it displays on your screen.

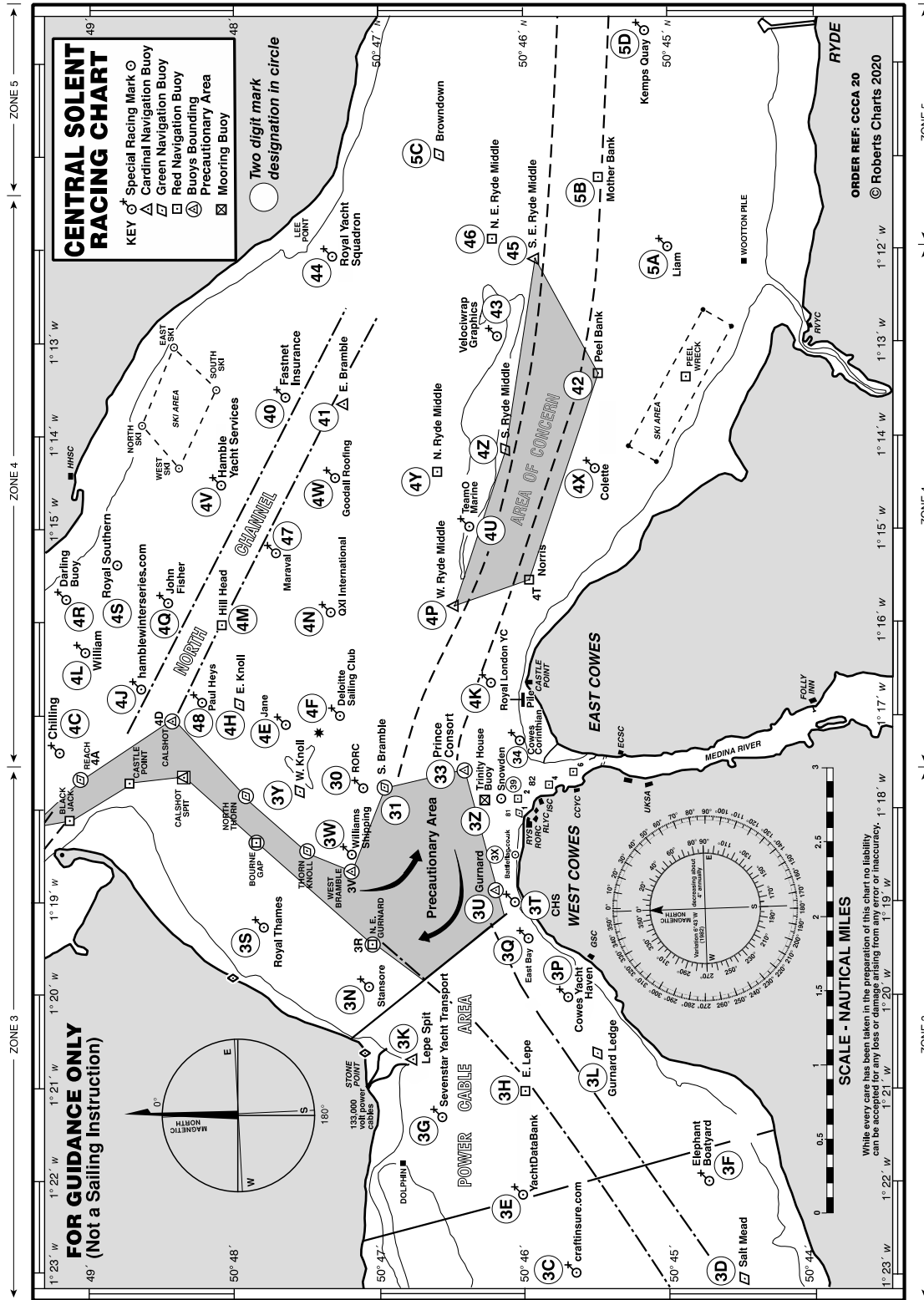
All correspondence should be directed to:

**The Royal Yacht Squadron**

The Castle, Cowes, UK, PO31 7QT. Tel: 01983 292191, Email: [mail@rys.org.uk](mailto:mail@rys.org.uk)

ADDENDUM D

- Solent Chartlets and Two Character Solent Mark Codes



All correspondence should be directed to:  
**The Royal Yacht Squadron**  
 The Castle, Cowes, UK, PO31 7QT. Tel: 01983 292191, Email: [mail@rys.org.uk](mailto:mail@rys.org.uk)