

# SAILING INSTRUCTIONS

(for the Cowes segment including the passage race to Le Havre)

## THE RICHARD MILLE CUP 20 – 23 JUNE 2022

### ORGANIZING AUTHORITY

#### CLASSIC REGATTAS LTD In collaboration with the ROYAL YACHT SQUADRON ROYAL CORNWAL YACHT CLUB ROYAL DART YACHT CLUB SOCIÉTÉ des RÉGATTES du HAVRE

*The notation '[DP]' in a rule in the Sailing Instructions means that the penalty for a breach of that rule may, at the discretion of the protest committee, be less than disqualification.*

*The notation '[NP]' in a rule of the Sailing Instructions (SIs) means that a boat may not protest another boat for breaking that rule. This changes RRS 60.1(a).*

#### 1. RULES

- 1.1 See Notice of Race **1 (RULES)**.

#### 2. CHANGES TO SAILING INSTRUCTIONS

- 2.1 Any change to the Sailing Instructions (SIs) made ashore will be posted by 0900 on the day it will take effect, except that any change to the schedule of races will be posted by 2000 on the day before it will take effect.
- 2.2 Changes to a sailing instruction may be made on the water using VHF Ch 05 to communicate with competitors.

#### 3. COMMUNICATIONS WITH COMPETITORS

- 3.1 The Race Committee (RC) intends to broadcast race information and course information by VHF Ch 05 and repeated on the Event Telegram group.
- 3.2 Competitors wishing to communicate with the RC should do so on VHF Ch 77.
- 3.3 Notices to competitors will be posted on the Official Notice Board (ONB).
- 3.4 The ONB will be online at <https://www.richardmillecup.com/notice-board>
- 3.5 The Race Office is at the Royal Yacht Squadron (RYS).
- 3.6 The RC will make courtesy broadcasts to competitors on VHF Ch 05.
- 3.7 Competitors wishing to communicate with the RC should do so on VHF Ch 77.
- 3.8 The Organizing Authority (OA) and RC will also use the Event "Telegram" Group to communicate with competitors.

#### 4. CODE OF CONDUCT

- 4.1 Competitors and support persons shall comply with reasonable requests from race officials.

#### 5. SIGNALS MADE ASHORE

- 5.1 Signals made ashore will be displayed at the RYS Flagstaff and advised on the Event Telegram group.
- 5.2 When flag AP is displayed ashore, "1 minute" is replaced by "not less than 90 minutes". This changes Race Signals AP.

#### 6. SCHEDULE OF RACES

- 6.1 See Notice of Race **9 (Schedule)**.

#### 7. CLASS FLAGS

- 7.1 [DP] The class flags, displayed at the warning signal, will be as follows:
- (a) **Schooner Class** - White flag with Event logo in black;
- (b) **Cutter class** - Black flag with Event logo in white.
- 7.2 [DP] [NP] Boats will be provided with class flags which shall be displayed from the starboard shroud or backstay at all times while racing.

#### 8. RACING AREA

- 8.1 The Racing Area shall be the Solent and Approaches. A chartlet showing the Solent Racing Area and Two Character Codes for racing marks can be found in Addendum A.

#### 9. COURSES

- 9.1 The courses to be sailed will use a combination of laid inflatable marks, fixed racing marks, navigation marks and virtual marks.
- 9.2 Courses will be announced by International VHF CH 05 and repeated on the Telegram Group.
- 9.3 World Sailing RRS Appendix WP (Rules for racing around waypoints) will apply **IF** virtual marks are included in courses.
- 9.4 All Classes will start from the Royal Yacht Squadron Line, unless otherwise directed not later than one hour before the start of that race.

#### 10. MARKS

- 10.1 Marks of the course will be inflatable buoys, fixed navigation buoys and fixed racing marks.
- 10.2 The RC may also use Virtual Marks if required.
- 10.3 World Sailing RRS Appendix WP (Rules for racing around waypoints) will apply if virtual marks are included in courses. Further information may be found at: [https://www.sailing.org/tools/documents/AppendixWPRulesforWaypointsMay2021-\[27276\].pdf](https://www.sailing.org/tools/documents/AppendixWPRulesforWaypointsMay2021-[27276].pdf)

#### 11. OBSTRUCTIONS

- 11.1 All yachts shall comply with [Associated British Ports Notice to Mariners No 06 of 2023](#) giving details of a Precautionary Area and Moving Prohibited Zone (MPZ). The MPZ shall rank as an obstruction for the purposes of RRS 19 and 20. See Addendum C of these SIs.
- 11.2 Whilst racing, boats shall pass to the north of the Cowes Breakwater.

- 11.3 Any official boat in close attendance to a craft in difficulty is an obstruction.

## 12. THE START

- 12.1 Races will be started by using RRS 26.
- 12.2 The order in which classes start will normally be Schooners followed by Cutters for Solent racing.
- 12.3 The passage race to Le Havre will be a pursuit race and start times will be provided at the passage race briefing.
- 12.4 Classes will normally start at **ten-minute** intervals. The starting signal for one class will be followed five minutes later by the warning signal for the next class to start. However, in the event of a long postponement or other reason, the RC may reduce this to a five-minute sequence so that the start of one class will be the warning signal of the next class. Any change to the ten-minute sequence will be announced on VHF CH 05.

Time	Event	Signal
Start minus 5 minutes	<b>Warning Signal</b>	One gun. Class flag displayed
Start minus 4 minutes	<b>Preparatory Signal</b>	One gun. Preparatory flag displayed
Start minus 1 minute	<b>One Minute Signal</b>	Long horn sound. Preparatory flag removed
Start	<b>Class START</b>	One Gun. Class flag removed

- 12.5 [DP] Boats whose warning signal has not been made shall avoid the starting area during the starting sequence for other races.
- 12.6 All classes shall start on the RYS Start Line unless otherwise directed by the RC not later than one hour before the start of that race.
- 12.7 The RYS starting line consists of an **inner line**, an **outer line** or a **combined line** and will be announced with the course.
- 12.8 The RYS Start Line is formed by bringing the RYS Main Flagstaff into line with the white line on the orange diamond on the Castle, on a bearing of approximately 346°(T) from the RYS Flagstaff and limited by limit marks.
- 12.9 Vertical light beams are installed to help identify the starting line transit. The intensity of the light beams intensifies as the transit is approached and at the approximate point of transit, the flagstaff momentarily obscures the lower rear light. These lights are a navigational aid only and do not constitute the starting line, nor will a start be postponed because of any failure of the lighting equipment.
- 12.10 Start Line descriptions.
- (a) For classes starting on the **RYS Outer Line** the limit marks are **Williams Shipping Buoy** to the north and **'Alpha'**, to the south.
- (b) For classes starting on the **RYS Inner Line** the limit marks are **'Alpha'** to the north and the **IDM** to the south.
- (c) For classes starting on the **Combined Line** the limit marks are **Williams Shipping Buoy** to the north and the **IDM** to the south.
- 12.11 The limit marks, all of which rank as starting marks and may not be precisely on the transit, are:

- (a) **'Alpha'** (a large Orange Inflatable mark approximately 500m to the north of the RYS Flagstaff).
- (b) **Inner Distance Mark (IDM)** (a large Orange Inflatable mark approximately 80m to the north of the RYS Flagstaff).
- (c) **Williams Shipping Buoy** (a yellow spherical racing buoy in approximate position 50° 47.20 N, 001° 18.55 W).

### 12.12 Direction of start:

- (a) The RC will announce the intended direction of start not less than fifteen minutes before the start of each race. A signal displayed at the RYS Lodge Flagstaff will also indicate the direction of the start. A red flag indicates starting to the East. A green flag indicates starting to the West.
- (b) After a postponement this signal may be changed to reverse the direction of subsequent starts. Any such announcement will also be made on VHF Channel 05.

- 12.13 The RC intends to announce a start sequence countdown for each race on VHF Channel 05 accompanied by sound signals and signal flags displayed from the RYS flagstaff.

## 13. CHANGE OF THE NEXT LEG OF THE COURSE

- 13.1 Not Used.

## 14. THE FINISH

- 14.1 Unless shortened in accordance with RRS, yachts shall finish on the Royal Yacht Squadron Finishing Line.
- 14.2 The Royal Yacht Squadron Finishing Line will be between the RYS main flagstaff and 'Alpha' a large Orange Inflatable buoy approximately 500m north of the RYS Main Flagstaff.
- 14.3 Further details of the finish line for the Cowes - Le Havre passage race can be found in Addendum B.

## 15. PENALTY SYSTEM

- 15.1 See Notice of Race 14 (**Penalties**).

## 16. TIME LIMITS

- 16.1 The following time limits will apply to each class.
- (a) **Race Time Limit.** The time limit for boats in each class to sail the course and finish is 300 minutes.
- (b) **Finishing Window.** If at least one boat from their class finishes within the Race Time Limit, the Race Time Limit is extended by 60 minutes.
- 16.2 If no boat has finished within the Race Time Limit, the race shall be abandoned.
- 16.3 Boats failing to finish within the Finishing Window shall be scored Did Not Finish (DNF) without a hearing. This changes RRS 35, A4 and A5.
- 16.4 The RC may, in exceptional circumstances, extend the Race Time Limit or Finishing Window and this will be announced on VHF Ch 05. This changes RRS 35, A4 and A5.
- 16.5 The time limit for the passage race to Le Havre will be announced at the race briefing.

## 17. HEARING REQUESTS

- 17.1 The protest limit is 90 minutes after the last boat has finished the last race of the day or the RC signals no more racing today, whichever is later.
- 17.2 Hearing forms will be available at the Race Office. Protest and requests for redress or reopening shall be delivered to

the Race Office within the protest time limit. Contact mobile phone numbers should be included on the protest form.

- 17.3 Notices will be posted no later than 30 minutes after the protest time limit to inform competitors of the hearings in which they are parties or named as witnesses. Hearings will be held in the protest room located at the CYH.
- 17.4 On the last scheduled day of racing a request for redress based on a protest committee decision shall be delivered no later than 30 minutes after the decision was posted. This changes RRS 62.2.
- 17.5 Further details of hearings relating to the passage race to Le Havre, when confirmed, will be displayed on the ONB.

## 18. SCORING

- 18.1 See Notice of Race **15 (Scoring)**.

## 19. SAFETY REGULATIONS

- 19.1 A boat that retires from a race shall notify the RC as soon as possible on VHF CH 77.
- 19.2 For safety reasons, yachts may run their engines in neutral at any time during the race. Engines may be put into gear and thrusters may be used at any time during the race for a yacht to take action in order to avoid collision.
- 19.3 [DP] A yacht that puts her engine in gear or uses her thruster at any time while racing shall submit a written declaration of "engine use" to the OA soon as practical after racing, stating the time the engine was in gear or thruster used, the reason for using it and the duration of use.
- 19.4 [DP] The Protest Committee will review all such declarations to determine whether any competitive advantage was gained.

## 20. REPLACEMENT OF CREW OR EQUIPMENT

- 20.1 There is no restriction on the substitution, addition, or reduction of crew.
- 20.2 Before each passage race, the names of each person onboard shall be notified to the Race Office or on the form provided at registration.
- 20.3 Substitution of damaged or lost equipment, excluding small chandlery, is not allowed unless authorised in writing by the RC. Requests for substitution shall be made to the RC at the first reasonable opportunity, which may be after the race.

## 21. EQUIPMENT AND MEASUREMENT CHECKS

- 21.1 A boat or equipment may be inspected at any time for compliance with the Rules.

## 22. SUPPLIED BOATS

- 22.1 Not used..

## 23. OFFICIAL VESSELS

- 23.1 Mark laying vessels will be RYS Ribs.

## 24. SUPPORT TEAMS

- 24.1 See Notice of Race **16 (Support Person Vessels)**.

## 25. TRASH DISPOSAL

- 25.1 Trash disposal is the responsibility of each boat.

## 26. BERTHING

- 26.1 See Notice of Race **18 (Berthing)**.

## 27. HAUL OUT RESTRICTIONS

- 27.1 See Notice of Race **19 (Haul Out Restrictions)**.

## 28. DIVING EQUIPMENT AND PLASTIC POOLS

- 28.1 See Notice of Race **20 (Diving Equipment and Plastic Pools)**.

## 29. PRIZES

- 29.1 See Notice of Race **25 (Prizes)**.

## 30. RISK STATEMENT

- (a) See Notice of Race **23 (Risk Statement)**.

## 31. INSURANCE

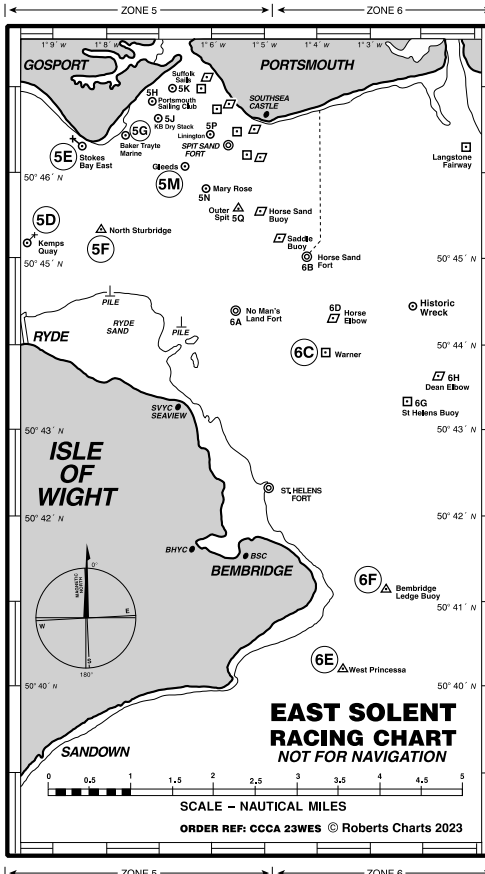
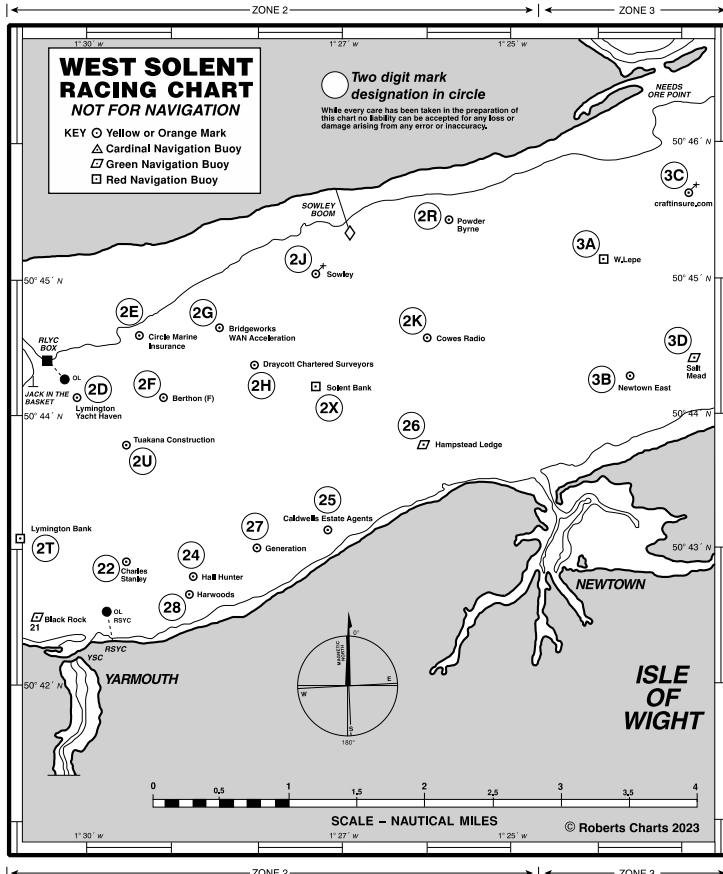
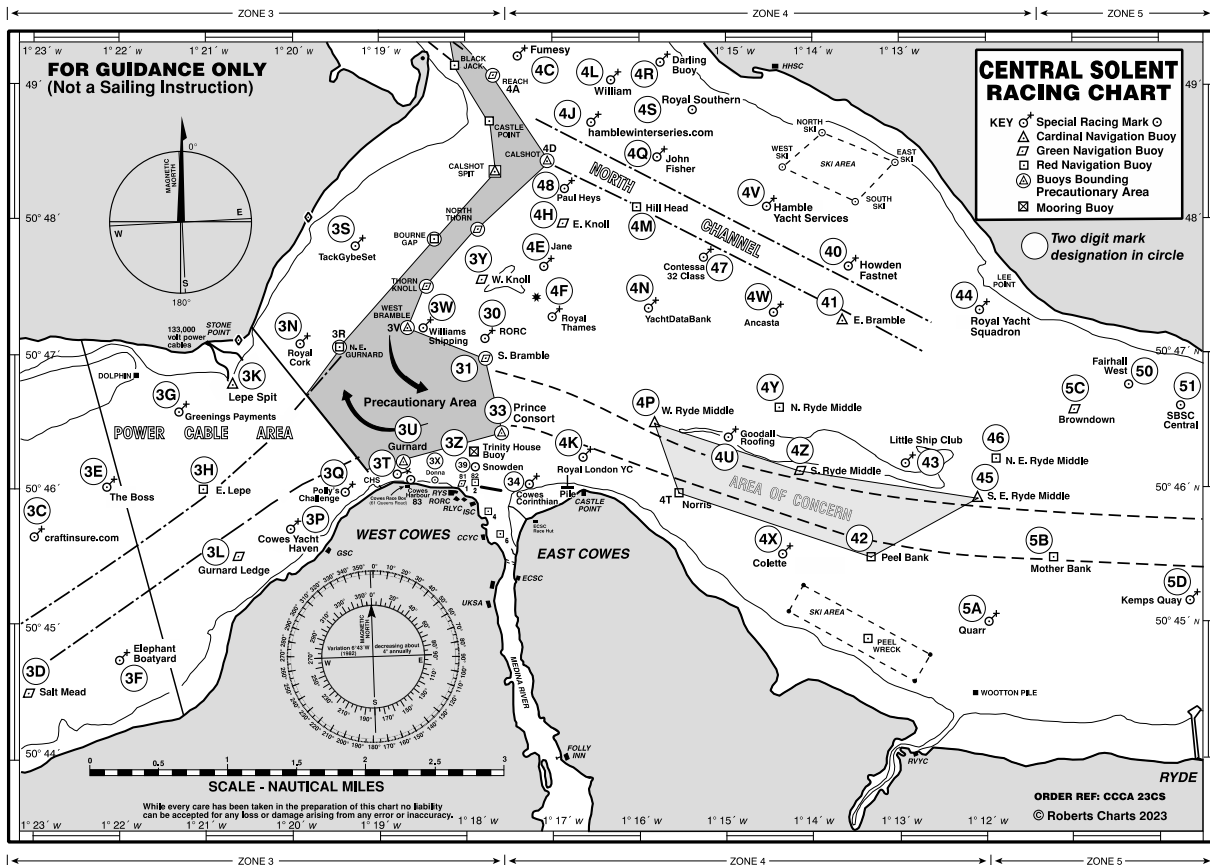
- See Notice of Race **24 (Insurance)**.

## 32. DRONES

- 32.1 Teams or their representatives shall not fly drones over the race area during training or racing days without complying with local legislation and in any case unless prior written approval by the OA has been obtained.
- (a) The approval granted at sole discretion of the OA may impose limitation on where and when to fly.
- (b) At any time, the risk and responsibility for flying any drone is with the person flying the drone and images made inside the race area shall be shared with the organizer, race committee or jury at reasonable request.

\*\*\*\*\*

**ADDENDUM A - Chartlets of the Racing Area and the Solent Two Character Codes for course setting.**



## SOLENT AREA MARK CODES 2023

Zone 1 Western Approaches					Zone 3 Mid Solent (W) Continued				
ID	Name	Colour	Lat N	Long W	ID	Name	Colour	Lat N	Long W
1A	Peveril Ledge	R	50 36.41	01 56.10	3Z	Trinity House Buoy	Y	50 46.31	01 17.75
1B	Poole Bar No 1	G	50 39.29	01 55.14	30	RORC *	Y	50 47.12	01 17.72
1C	Stoneways Marine	Y	50 40.31	01 54.02	31	South Bramble	G	50 46.98	01 17.72
1D	The Rig Shop	Y	50 41.08	01 54.26	33	Prince Consort	BY	50 46.41	01 17.56
1E	Ledge Buoy	Y	50 41.50	01 41.60	34	Cowes Corinthian	Y	50 46.15	01 17.20
1F	Needles Fairway	RW	50 38.24	01 38.98	39	Snowden	Y	50 46.20	01 17.75
1G	South West Shingles	R	50 39.29	01 37.52	<b>Zone 4 Mid Solent (E)</b>				
1H	Bridge	YBY	50 39.63	01 36.88	4A	Reach #	G	50 49.05	01 17.65
1J	Shingles Elbow	R	50 40.37	01 36.05	4B	Coronation	Y	50 49.55	01 17.62
1K	North Head	G	50 42.69	01 35.52	4C	Fumesy*	Y	50 49.21	01 17.46
1L	Needles Lighthouse	RW	50 39.73	01 35.50	4D	Calshot #	BY	50 48.44	01 17.03
1M	Warden	G	50 41.48	01 33.55	4E	Jane *	Y	50 47.67	01 17.00
1N	North East Shingles	BYB	50 41.96	01 33.41	4F	Royal Thames	Y	50 47.20	01 17.00
11	East Hook	R	50 40.58	01 55.23	4G	Chieftain Training*	Y	50 49.45	01 16.91
12	MB/EYE Marine/Christchurch SC	Y	50 42.60	01 40.80	4H	East Knoll	G	50 47.96	01 16.83
13	Parkstone YC	Y	50 39.46	01 55.20	4J	hamblewinterseries.com *	Y	50 48.63	01 16.56
<b>Zone 2 West Solent</b>					4K	Royal London YC	Y	50 46.15	01 16.65
2A	Chewton Glen Hotel & Spa	Y	50 42.77	01 32.43	4L	William *	Y	50 49.03	01 16.49
2B	Dunford Construction	Y	50 43.38	01 31.54	4M	Hill Head	R	50 48.07	01 16.00
2C	Colten	Y	50 43.83	01 30.86	4N	YachtDataBank	Y	50 47.27	01 15.90
2D	Lymington Yacht Haven	Y	50 44.17	01 30.10	4P	West Ryde Middle	YBY	50 46.48	01 15.79
2E	Circle Marine Insurance	Y	50 44.49	01 29.32	4Q	John Fisher*	Y	50 48.46	01 15.72
2F	Berthon	Y	50 44.20	01 29.22	4R	Darling Buoy *	Y	50 49.18	01 15.71
2G	Bridgeworks WAN Acceleration	Y	50 44.79	01 28.47	4S	Royal Southern*	Y	50 48.86	01 15.43
2H	Draycott Chartered Surveyors	Y	50 44.30	01 28.16	4T	Norris #	R	50 45.97	01 15.51
2J	Sowley	Y	50 45.11	01 27.34	4U	Goodall Roofing	Y	50 46.43	01 15.09
2K	Cowes Radio	Y	50 44.83	01 26.09	4V	Hamble Yacht Services	Y	50 48.13	01 14.64
2L	Royal Lymington YC	Y	50 43.14	01 31.95	4W	Ancasta	Y	50 47.33	01 14.59
2R	Powder Byrne	Y	50 45.43	01 25.89	4X	Colette	Y	50 45.53	01 14.39
2T	Lymington Bank	R	50 43.10	01 30.85	4Y	North Ryde Middle	R	50 46.61	01 14.31
2U	Tuakana Construction	Y	50 43.67	01 29.50	4Z	South Ryde Middle	G	50 46.13	01 14.16
2X	Solent Bank	R	50 44.23	01 27.37	40	Howden Fastnet	Y	50 47.66	01 13.65
20	Sconce	BY	50 42.53	01 31.43	41	East Bramble	BYB	50 47.23	01 13.64
21	Black Rock	G	50 42.57	01 30.59	42	Peel Bank	R	50 45.49	01 13.35
22	Charles Stanley	Y	50 42.86	01 29.40	43	Little Ship Club	Y	50 46.16	01 13.09
24	Hall Hunter	Y	50 42.86	01 28.42	44	Royal Yacht Squadron	Y	50 47.31	01 12.10
25	Caldwells Estate Agents	Y	50 43.15	01 27.49	45	South East Ryde Middle	YB	50 45.93	01 12.10
26	Hamstead Ledge	G	50 43.87	01 26.18	46	North East Ryde Middle	R	50 46.21	01 11.88
27	Generation	Y	50 42.97	01 28.16	47	Contessa 32 Class	Y	50 47.70	01 15.25
28	Harwoods	Y	50.42.73	01.28.69	48	Paul Heys *	Y	50 48.21	01 16.68
<b>Zone 3 Mid Solent (W)</b>					<b>Zone 5 East Solent</b>				
3A	West Lepe	R	50 45.24	01 24.09	5A	Quarr	Y	50 45.03	01 11.89
3B	Newtown East	Y	50 44.36	01 23.80	5B	Mother Bank	R	50 45.49	01 11.21
3C	craftinsure.com	Y	50 45.64	01 23.12	5C	Browndown	G	50 46.57	01 10.95
3D	Salt Mead	G	50 44.51	01 23.04	5D	Kemps Quay	Y	50 45.18	01 09.65
3E	The Boss	Y	50 46.13	01 22.19	5E	Stokes Bay East	Y	50 46.26	01 08.76
3F	Elephant Boatyard	Y	50 44.72	01 21.95	5F	North Sturbridge	BY	50 45.33	01 08.23
3G	Greenings Payments	Y	50 46.58	01 21.46	5G	Baker Trayte Marine	Y	50 46.42	01 07.90
3H	East Lepe	R	50 45.93	01 21.07	5H	Portsmouth SC	Y	50 46.82	01 07.35
3K	Lepe Spit	YB	50 46.78	01 20.64	5J	KB Dry Stack	Y	50 46.61	01 07.29
3L	Gurnard Ledge	G	50 45.51	01 20.59	5K	Suffolk Sails	Y	50 47.08	01 06.78
3N	Royal Cork*	Y	50 47.07	01 19.88	5M	Gleeds	Y	50 46.11	01 06.52
3P	Cowes Yacht Haven	Y	50 45.68	01 19.98	5N	Mary Rose	Y	50 45.80	01 06.20
3Q	Polly's Challenge	Y	50 45.97	01 19.45	5P	Linington	Y	50 46.36	01 06.08
3R	North East Gurnard #	R	50 47.06	01 19.42	5Q	Outer Spit ©	YB	50 45.44	01 05.46
3S	TackGybeSet*	Y	50 47.81	01 19.25	50	Fairhall West @	Y	50 46.81	01 10.40
3T	CHS	Y	50 46.10	01 18.87	51	SBSC Central @	Y	50 46.60	01 09.85
3U	Gurnard	BY	50 46.22	01 18.84	© 5Q Outer Spit may only be used if given prior consent by QHM, which must be sought in weekday office hours @ Sundays: SBSC only except Cowes Week  See other notes on next page				
3V	West Bramble #	YBY	50 47.20	01 18.65					
3W	Williams Shipping *	Y	50 47.20	01 18.55					
3X	Donna	Y	50 46.10	01 18.43					
3Y	West Knoll	Y	50 47.43	01 17.84					

Zone 3 continued in next column

## SOLENT AREA MARK CODES 2023

Zone 6 Eastern Approaches					Zone 8 Local Marks & Positions				
ID	Name	Colour	Lat N	Long W	ID	Name	Colour	Lat N	Long W
6A	No Man's Land Fort	B	50 44.40	01 05.70	8A				
6B	Horse Sand Fort	B	50 45.01	01 04.34	8B				
6C	Warner	R	50 43.87	01 03.99	8C				
6D	Horse Elbow	G	50 44.26	01 03.88	8D				
6E	West Princessa	YBY	50 40.16	01 03.65	8E				
6F	Bembridge Ledge Buoy	BYB	50 41.15	01 02.81	8F				
6G	St Helens Buoy	R	50 43.36	01 02.41	8G				
6H	Dean Elbow	G	50 43.69	01 01.88	8H				
6J	Nab East	R	50 42.86	01 00.80	8J				
6K	Horse Tail	G	50 43.23	01 00.23	8K				
6L	Winner	YB	50 45.10	01 00.10	8L				
6M	Nab End	R	50 42.63	00 59.49	8M				
6N	Dean Tail	G	50 42.99	00 59.17	8N				
6P	New Grounds	BYB	50 41.84	00 58.49	8P				
6R	Nab Tower	B	50 40.08	00 57.15	8Q				
6S	Outer Nab No 2	BYB	50 38.43	00 57.70	8R				
<b>Zone 7 Southampton Water</b>					8S				
7A	Gymp	R	50 53.07	01 24.16	8T				
7B	Hythe Knock	R	50 52.83	01 23.81	8U				
7C	No 1 Swinging	G	50 53.00	01 23.44	8V				
7D	Weston Shelf	G	50 52.71	01 23.26	8W				
7E	Hythe 5	Y	50 52.24	01 23.18	8X				
7F	Jib *	Y	50 52.96	01 23.06	8Y				
7H	Moorhead	G	50 52.55	01 22.90	8Z				
7J	Deans Elbow	R	50 52.20	01 22.85	80				
7K	NW Netley	G	50 52.31	01 22.73	81				
7L	Hovercraft 4	Y	50 52.66	01 22.42	82				
7N	SWSA/HSC	Y	50 51.76	01 22.28	83				
7P	Hovercraft 3	Y	50 52.43	01 22.01	84				
7Q	Netley	G	50 52.03	01 21.81	85				
7R	Lains Lake	R	50 51.59	01 21.65	86				
7S	Deans Lake	R	50 51.40	01 21.59	87				
7T	Hovercraft 2	Y	50 52.21	01 21.58	88				
7U	Hound	G	50 51.68	01 21.52	<b>Zone 9 Laid Marks</b>				
7V	Hovercraft 1	Y	50 51.99	01 21.16	9A	Windward Laid Mark			
7W	After Barn	G	50 51.53	01 20.82	9B	Windward Spreader Mark			
7Y	Cadland	R	50 51.02	01 20.54	9C	Leeward Laid Mark			
7Z	Greenland	G	50 51.11	01 20.38	9D	Leeward Spreader Mark			
70	Cathead *	Y	50 50.61	01 19.24	9E	Leeward Gate			
71	Mark *	Y	50 49.56	01 18.94	9F	Middle Gate			
72	Hamble Point	YB	50 50.15	01 18.66	9G	Wing Mark			
73	Bald Head	G	50 49.80	01 18.07	9H	Outer Distance Mark			
74	Sposa *	Y	50 49.66	01 17.59	9J	Finish Mark			
75	Magazine *	Y	50 52.83	01 23.98	9K	Far Windward Mark			
76	Test	R	50 52.59	01 23.45	9L	Far Windward Spreader			
77	Fawley Deep	G	50 50.42	01 19.19	9M	Near Windward Mark			
78	Hook #	G	50 49.52	01 18.30	9N	Near Windward Spreader			
<p># Only used for passing and keeping boats out of channel, not for ordinary rounding. Use of other main channel marks should be minimised</p> <p>Most yellow race marks are seasonal March-November</p> <p>* These marks may be in place all year round</p> <p>Mark codes are mainly in order by longitude from west to east, except Zone 2 is split into Mainland, Middle, and Island Side. Marks added to the list since 2010 may be at the end of their Zones. "Missing" codes are spares.</p>					9P				
					9Q				
					9R				
					9S				
					9T				
					9U				
					9V				
					9W				
					9X				
					9Y				
9Z									

E&amp;OE

Solent Area Marks

06 February 2023

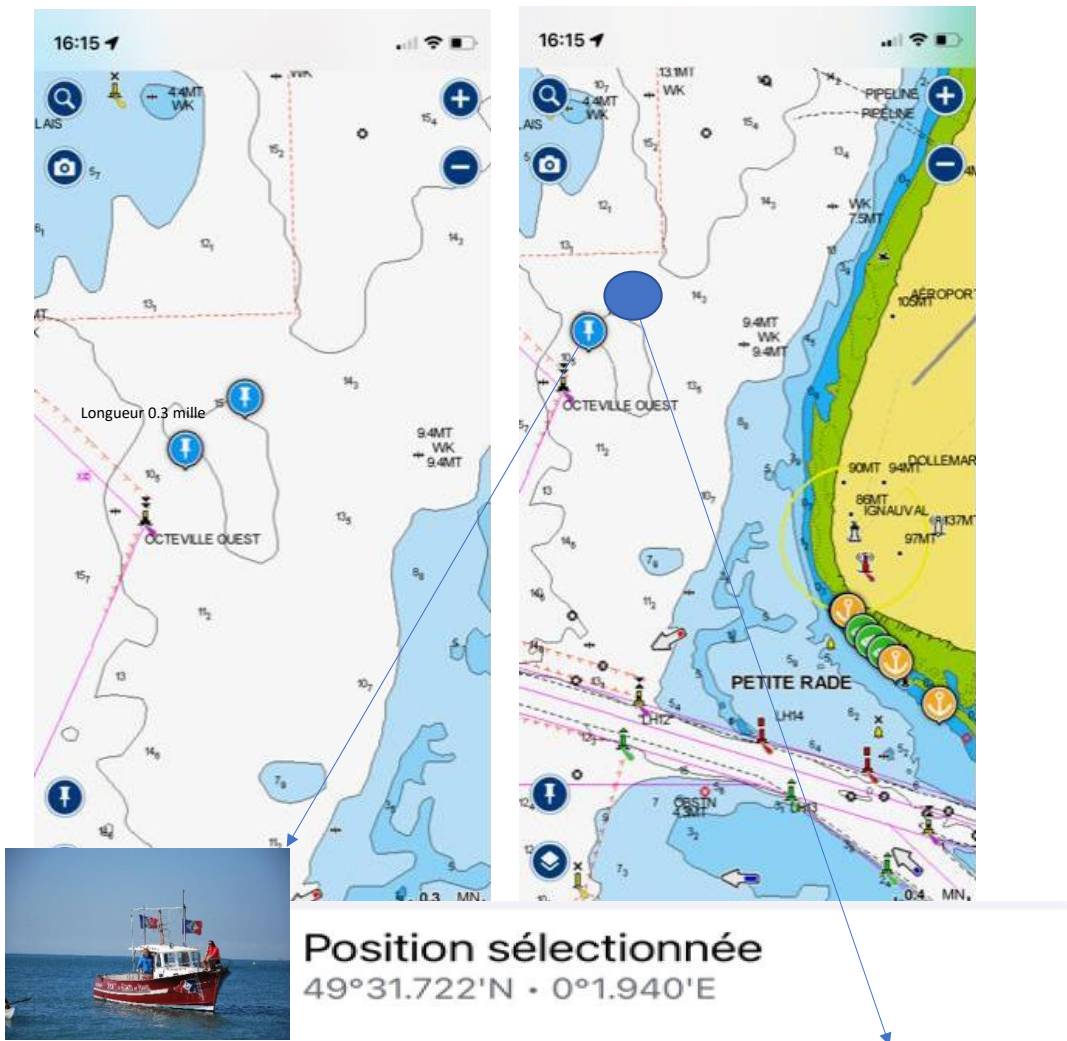
All correspondence should be directed to:

The Royal Yacht Squadron, The Castle, Cowes, UK, PO31 7QT. Tel: 01983 292191, Email: [mail@rys.org.uk](mailto:mail@rys.org.uk)

ADDENDUM B - Le Havre Finish



LIGNE D'ARRIVEE RICHARD MILLE CUP 2023



Position sélectionnée  
49°31.902'N · 0°2.270'E

Bouée Richard Mille

Club House du Port de Plaisance  
Quai Eric Tabarly, 76600 Le Havre

Tél : 02 35 42 41 21  
Fax : 02 35 43 50 76

[www.lesregates.com](http://www.lesregates.com)  
srh@lesregates.com

Fondée en 1838  
Reconnue d'utilité publique  
Club allié du Yacht Club de France

**ADDENDUM C – Precautionary Area and Moving Prohibited Zone.**

## NOTICE TO MARINERS No 06 of 2023

### Port of Southampton – Precautionary Area (Thorn Channel)

**1 NOTICE IS HEREBY GIVEN** in support of planning for the forthcoming busy season for all users of The Solent that all vessels navigating within the Port of Southampton shall ensure that a vessel **greater than 220 metres in length overall** shall be given a 'clear channel' in the area between the Hook Buoy and the Prince Consort Buoy (hereinafter referred to as 'The Precautionary Area' - (see Chartlet 1)).

The term 'clear channel' is defined as: 'a clear and unimpeded passage ahead of a vessel when transiting the Precautionary Area'.

The term 'clear channel vessel' is defined as: 'a vessel greater than 220 metres in length overall which requires a clear and unimpeded passage ahead when transiting the Precautionary Area'.

Vessels may enter 'The Precautionary Area' maintaining a safe distance astern of a 'clear channel vessel'.

**2** Two vessels each having a length **greater than 180 metres length overall** shall not pass or overtake each other between Hook Buoy and a line drawn due south of West Bramble Buoy.

### **3 Moving Prohibited Zone (MPZ)** (See ABP Chartlet 1)

Southampton Harbour Byelaws 2003 Byelaw No 11 enforces the requirement that all vessels **over 150 metres in length overall** when navigating within 'The Precautionary Area' referred to in this notice are automatically allocated a 'Moving Prohibited Zone' (MPZ). The MPZ is defined as an area extending 1000 metres ahead of the bow and 100 metres from the ship's side on both sides of any vessel of **over 150 metres in length overall** whilst it is navigating within 'The Precautionary Area' (See Chartlet 1).

The master of a **small vessel** (defined in Southampton Harbour Byelaws 2003 Byelaw No 3 as any vessel of less than 20 metres in length or a sailing vessel) shall ensure that the vessel does not enter an MPZ.

For the purpose of indicating the presence of the MPZ the master of any vessel of **over 150 metres length overall** shall display on the vessel, where it can best be seen, by day, a black cylinder, and by night, 3 all round red lights in a vertical line.



# ABP Chartlet 1

