



SOLENT PLATINUM JUBILEE CELEBRATION 6 AUGUST 2022

ORGANIZING AUTHORITY ROYAL YACHT SQUADRON COWES, UK

SAILING INSTRUCTIONS

The notation '[DP]' in a rule in the Sailing Instructions means that the penalty for a breach of that rule may, at the discretion of the protest committee, be less than disqualification.

1. RULES

- 1.1. The event is governed by the *rules* as defined in the Racing Rules of Sailing (RRS).
- 1.2. Notice to Mariners for the Ports of Southampton, Portsmouth and Cowes apply.

2. CHANGES TO SAILING INSTRUCTIONS

- 2.1. Any change to the Sailing Instructions (SI) made ashore will be posted by 1000 on the day it will take effect, except that any change to the schedule of races will be posted by 2000 on the day before it will take effect.
- 2.2. Changes to an SI may be made on the water using VHF Radio to communicate with competitors, this may be repeated on WhatsApp.

3. COMMUNICATIONS WITH COMPETITORS

- 3.1. Notices to competitors will be posted on the Official Notice Board (ONB).
- 3.2. The ONB will be online at www.rys.org.uk.
- 3.3. The Race Office is in The Royal Yacht Squadron (RYS).
- 3.4. The Race Committee (RC) intends to broadcast race information and course information by VHF Ch 77.
- 3.5. Competitors wishing to communicate with the RC should do so on VHF Ch 77.
- 3.6. An Event WhatsApp Group will be used to communicate with competitors and to draw attention to the ONB. The QR code is available at SI Addendum A.
- 3.7. While racing, except in an emergency, a boat shall not make voice or data transmissions and shall not receive

voice or data communication that is not available to all boats.

4. CODE OF CONDUCT

- 4.1. Competitors and support persons shall comply with reasonable requests from race officials.

5. SIGNALS MADE ASHORE AND AFLOAT

- 5.1. Signals made ashore will be displayed at the RYS Lodge Flagstaff and may be communicated by VHF and on WhatsApp.
- 5.2. When Flag AP is displayed ashore, "1 minute" is replaced by "not less than 45 minutes". This changes Race Signals AP.
- 5.3. The RYS Main Flagstaff is likely to be dressed overall for the day. However, the flags will be removed for the purposes of running the racing.

6. SCHEDULE OF RACES

- 6.1. The intention of the RC is to run two (2) races, one for competitors heading 'home' to the north or east, and one for those heading 'home' to the west.
- 6.2. There will be 2 schedule starts for Race 1. The first is for the Redwing Class and the second for all other classes. There will be a single start for Race 2. This may be altered depending on the final number of entrants.
- 6.3. Times shown are UTC+ 1 Hour (BST).
- 6.4. Tide times are for High Water Portsmouth.
- 6.5. The Daily Briefing by the Race Officer will be conducted on WhatsApp.
- 6.6. The Schedule is as follows:

Date	Event	Time
Sat 6 August HWP (neaps) 0556 – 4.0m (BST) 1836 – 4.1m (BST)	Briefing	1200 by WhatsApp
	Race 1a (Eastern based clubs – Redwings)	1335 1 st Warning Signal
	Race 1b (Eastern based clubs – not Redwings)	1340 1 st Warning Signal
	Race 2 (Western based clubs)	1455 1 st Warning Signal

7. CLASS FLAGS

- 7.1. The Class flags will be as follows:

Race 1a - Flag R



Race 1b - Flag E



Race 2 - Flag W



8. RACING AREA

- 8.1. Racing will take place in the Solent.

9. COURSES

- 9.1. The format for racing will be a passage race from the RYS Line to the home club of each class of boats entered. The intent is to avoid adding significant distance to the course were it to be designed as a straight passage.
- 9.2. The RC intends to announce the Course on VHF Ch 77 and WhatsApp one hour prior to the start of each race (call sign: CASTLE ONE). This will be repeated before the Warning Signal, and again as soon as possible after the Preparatory Signal. This may also be repeated on WhatsApp.
- 9.3. The course will aim to deconflict, so far as possible, with the planned 'motor past' scheduled as past of the Celebration Day and referred to in SI 19.2.

10. MARKS

- 10.1. All courses will use fixed navigation buoys, racing marks or inflatable buoys.

11. OBSTRUCTIONS

- 11.1. All yachts shall comply with Associated British Ports Notice to Mariners No 08 of 2022 giving details of a Precautionary Area and Moving Prohibited Zone (MPZ). The MPZ shall rank as an obstruction for the purposes of RRS 19 and 20.
- 11.2. Whilst racing, boats shall pass to the north of the Cowes Breakwater.

12. THE START

- 12.1. All classes shall start on the RYS Start Line, unless otherwise directed by the RC not later than one hour before the start of that race.
- 12.2. The RYS Start Line is formed by bringing the RYS Main Flagstaff into line with the white line on the orange diamond on The Castle, on a bearing of approximately 346°(T) from the RYS Flagstaff and limited by limit marks.
- 12.3. Vertical light beams are installed to help identify the starting line transit. The intensity of the light beams intensifies as the transit is approached and at the approximate point of transit, the Flagstaff momentarily obscures the lower rear light. These lights are a navigational aid only and do not constitute the starting line, nor will a start be postponed because of any failure of the lighting equipment. An Orange Flag will not be displayed. This changes RRS Race Signals.
- 12.4. The limit marks, all of which rank as starting marks and may not be precisely on the transit, are:
- 'Alpha' (an Orange Inflatable mark approximately 400m to the north of the RYS Flagstaff).
 - Inner Distance Mark (IDM) (an Orange Inflatable mark approximately 70m to the north of the RYS Flagstaff)
- 12.5. Start Line descriptions.
- Race 1a and 1b, classes may be started on the RYS Outer Line. The limit marks are Williams Shipping Buoy

(3W) to the north and 'Alpha', to the south. This will be announced along with the course as described in SI 9.2.

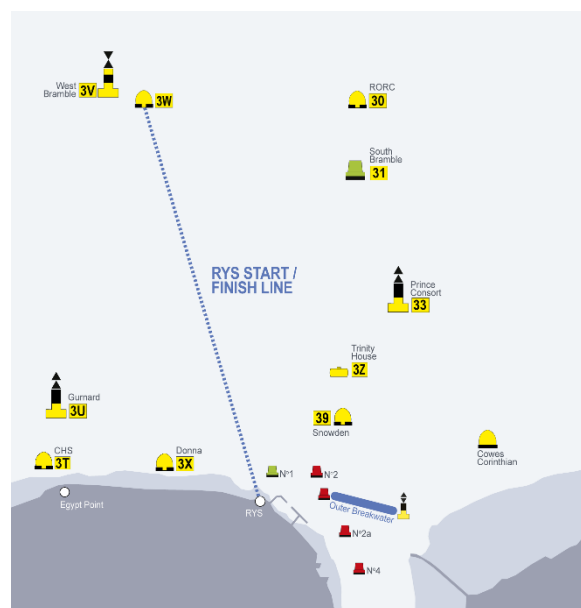
- For Race 2, classes will start on the RYS Inner Line the limit marks are 'Alpha' to the north and the IDM to the south.

12.6. Direction of start.

The RC will announce the intended direction of start not less than fifteen (15) minutes before the start of each race. A signal displayed at the RYS Lodge Flagstaff will also indicate the direction of the start. A Red Flag indicates starting to the East. A Green Flag indicates starting to the West.

12.7. The RC intends to announce a start sequence countdown for each start on VHF Ch 77 accompanied by sound signals and signal flags displayed from the RYS Flagstaff.

- 12.8. If any part of a boat's hull is on the course side of the Starting Line at her starting signal and she is identified, the RC, after Flag X has been displayed, will attempt to hail her bow number, sail number or boat name as soon as practicable using VHF Ch 77. Failure to hail her number, failure of her to hear such a hail, or the order in which the boats are hailed will not be grounds for a redress request. This changes RRS 62.1(a).



13. CHANGE OF THE NEXT LEG OF THE COURSE

- 13.1. Not applicable

14. THE FINISH

- 14.1. The Finishing Line will be designated by individual clubs and is anticipated to be that usually used by each Club. SI Addendum B promulgates the expected Finishing lines. Club / Class leads may amend these prior to 1200 on 6 August but not after. Clubs / Class leads for the events may choose to invite their competitors to 'self-finish'.
- 14.2. The absence of CVs and the use of different finishing lines for different classes precludes the ability to shorten courses.

14.3. Finishing and the determination of the top 3 for the award of prizes is the responsibility of the individual clubs / classes and not the Organizing Authority.

15. PENALTY SYSTEM

15.1. RRS 44.1 is changed so that a boat may take a One-Turn penalty when she may have broken one or more rules of Part 2 or rule 31 in an incident whilst racing. However, when she may have broken one or more rules of Part 2 while in the zone around a mark other than a starting mark, her penalty shall be a Two-Turns penalty.

16. TIME LIMITS

- 16.1. The following time limits will apply.
- The Finish Time Limit for the first boat in each class to sail the course and finish is 210 minutes.
 - Finishing Window. The time limit for boats to finish after the first boat in their class sails the course and finishes is 45 minutes.
 - Boats that are still racing but do not finish within the Finishing Window, will be scored Time Limit Expired (TLE). The TLE score will be equal to the number of boats to finish plus 2 points. This changes RRS 35, A5.1, A5.2 and A10.
 - If no boat has finished within the Finish Time Limit, the race will be abandoned.

17. HEARING REQUESTS

- 17.1. The Protest Time Limit is 30 minutes after the last boat has finished the last race of the day or the RC signals no more racing today, whichever is later.
- 17.2. Protest hearings are the responsibility for each individual Class / Club, and arbitration should be considered in-line with the Corinthian nature of this Regatta.
- 17.3. Protests and hearings may be heard virtually where this is expedient, agreed by all parties and acceptable to the chair of the Protest Committee. Failure to offer this option will not be grounds for a redress request.

18. SCORING

- 18.1. One (1) race shall be completed to constitute a series.
- 18.2. Low points scoring system will apply to all classes.
- 18.3. Results should be passed to the Race Office (mail@rys.org.uk) as soon as reasonably practicable and no later than 2000 on 6 August.

19. SAFETY REGULATIONS

- 19.1. A boat that retires from a race shall notify the RC as soon as possible on VHF Ch 77 or by hailing an official event support boat or RIB. [DP]
- 19.2. The start area will be busy due to other events scheduled for the Day. Particular attention is drawn to the planned 'motor past' by members of Solent Clubs, with the VVIP reviewing from the Cowes Guardship, moored to the north of the breakwater. A large number of vessels are expected to approach from the vicinity of Osborne Bay from 1350. See Addendum C for a schematic of the plan.

19.3. Yachts and boats taking part in the Motor Past will leave Osborne Bay from about 13:30 onwards and proceed westwards between the marshals' RIBs. As they approach the ship secured to the Trinity House buoy, they will reduce to 5 knots and pass no closer than 50 metres south of her and north of the blue motor boat (Castle Two Committee Vessel) at Snowden Buoy.

20. REPLACEMENT OF CREW OR EQUIPMENT

- 20.1. Substitution of competitors is permitted.
- 20.2. Substitution of damaged or lost equipment is permitted.

21. EQUIPMENT AND MEASUREMENT CHECKS

21.1. Does not apply.

22. SUPPLIED BOATS

22.1. Does not apply.

23. OFFICIAL VESSELS

23.1. Does not apply.

24. SUPPORT TEAMS

- 24.1. All support vessels shall carry a marine VHF radio and Support boats shall stay outside areas where boats are racing from the time of the preparatory signal for each start thereafter until all boats have finished or retired or the RC signals a postponement, general recall or abandonment. [DP]
- 24.2. All support vessels shall carry a marine VHF radio and comply with RRS 37 'Search and rescue Instructions'. [DP]

25. TRASH DISPOSAL

25.1. Trash may be placed aboard support or official boats.

26. HAUL OUT RESTRICTIONS

26.1. Does not apply.

27. DIVING EQUIPMENT AND PLASTIC POOLS

27.1. Does not apply.

28. PRIZES

- 28.1. The event prize giving will be held by individual clubs at a time of their choosing. The prizes will be provided by Solent Platinum Jubilee Celebration Committee and coordinated by RYS.
- 28.2. Prizes will be awarded for the first, second and third places.

29. RISK STATEMENT

- 29.1. RRS 3 states: "The responsibility for a boat's decision to participate in a race or to continue racing is hers alone."
- 29.2. Sailing is by its nature an unpredictable sport and therefore involves an element of risk. By taking part in the event, each competitor agrees and acknowledges that:

- (a) They are aware of the inherent element of risk involved in the sport and accept responsibility for the exposure of themselves, their crew and their boat to such inherent risk whilst taking part in the event;
- (b) They are responsible for the safety of themselves, their crew, their boat and their other property whether afloat or ashore;
- (c) They accept responsibility for any injury, damage or loss to the extent caused by their own actions or omissions;
- (d) Their boat is in good order, equipped to sail in the event and they are fit to participate;
- (e) The provision of a race management team, patrol boats, and other officials and volunteers by the event organiser does not relieve them of their own responsibilities;
- (f) The provision of patrol boat cover is limited to such assistance, particularly in extreme weather conditions, as can be practicably provided in the circumstances;
- (g) It is their responsibility to familiarise themselves with any risks specific to this venue or this event drawn to their attention in any rules and information produced for the venue or event and to attend any safety briefing held for the event.
- (h) They are responsible for ensuring that their boat is equipped and seaworthy so as to be able to face extremes of weather; that there is a crew sufficient in number, experience and fitness to withstand such weather; and that the safety equipment is properly maintained, stowed and in date and is familiar to the crew.

30. INSURANCE

- 30.1. Each participating boat is required to hold insurance cover and in particular to hold adequate insurance against third party claims of at least £3 million.

ADDENDUM A: WHATSAPP QR CODE FOR COMPETITORS



Or via this link: <https://chat.whatsapp.com/D63SsnMTFkh1xGkBOvJ4uY>

ADDENDUM B: FINISHING LINES

Boats shall finish on their individual Club Line, as described below. A Blue Flag may not be displayed. This changes Blue Flag in *Race Signals*.

For clarity, Club lines, are as follows unless otherwise described by the Clubs / Class leads for the event:

Bembridge Sailing Club - Under Tyne Line

The Finishing Line is between the red and white Mast on Colonel's Hard and Mark 'E' 'Hello Sailor', which is a Yellow Can Buoy to the off Under Tyne.

Itchenor Sailing Club

The Club Line is a line through the Club flagstaff, the white post on the south shore and the two posts with yellow top-marks on the north shore. Boats shall pass on the channel side of all these posts.

Lymington Clubs

The Finishing Line is between the Mast on the Starting Platform and Mark 'D', which is a Yellow Can Buoy to the South of the Platform.

Portsmouth

The Finishing Line be the Haslar Signal Station Line between the Mast at the Signal Station and the Outer Distance Mark Suffolk Sails.

Sea View Yacht Club

The Finishing Line is an extension of a line formed by bringing the SVYC Flagstaff inline with an Orange and White vertical marker board on the wall of the SVYC building. The Yellow Post is on an extension of this line. When finishing, boats shall pass between two yellow buoys marking the ILM and OLM.

Yarmouth (RSYC)

The Finishing Line will be an imaginary line between the Signal Flagstaff and the Finishing Mark, which is the yellow cylindrical buoy (No 9), approximately 450 metres north of the Signal Flagstaff.

ADDENDUM C: PLAN FOR THE MOTOR PAST

