



CAPE 31 CLASS NATIONAL CHAMPIONSHIPS

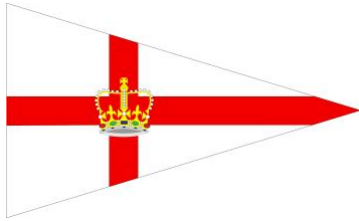
30 SEPTEMBER – 2 OCTOBER 2022

COWES

ORGANISING AUTHORITY:
ROYAL YACHT SQUADRON

SAILING INSTRUCTIONS





CAPE 31 CLASS NATIONAL CHAMPIONSHIPS

30 SEPTEMBER – 2 OCTOBER 2022
COWES

ORGANISING AUTHORITY:
ROYAL YACHT SQUADRON

SAILING INSTRUCTIONS

The notation '[DP]' in a rule in the Sailing Instructions means that the penalty for a breach of that rule may, at the discretion of the protest committee, be less than disqualification.

1. RULES

- 1.1 The event will be governed by the rules as defined in The Racing Rules of Sailing (RRS).
- 1.2 World Sailing Offshore Special Regulations (Category 4) shall apply. [Offshore Special Regulations](#)
- 1.3 Rules of the UK Cape 31 One Design Class shall apply.
- 1.4 [DP] Notices to Mariners for the Ports of [Southampton](#), [Portsmouth](#) and [Cowes](#).

2. CHANGES TO SAILING INSTRUCTIONS

- 2.1 Any change to the Sailing Instructions (SIs) made ashore will be posted by 0900 on the day it will take effect, except that any change to the schedule of races will be posted by 2000 on the day before it will take effect.

3. COMMUNICATIONS WITH COMPETITORS

- 3.1 Notices to competitors will be posted on the Official Notice Board (ONB).
- 3.2 The ONB will be online at www.rys.org.uk.
- 3.3 The Race Office is in the Royal Yacht Squadron (RYS).
- 3.4 The Race Committee (RC) intends to broadcast race information and course information by VHF Ch 05.
- 3.5 Competitors wishing to communicate with the Race Committee should do so on VHF Ch 77.

- 3.6 [DP] Whilst racing (From the first Warning Signal until the end of the last race of the day), except in an emergency, a boat shall not make voice or data transmissions nor receive voice or data transmissions that are not available to all boats.

4. CODE OF CONDUCT

- 4.1 Competitors and support persons shall comply with reasonable requests from race officials.

5. SIGNALS MADE ASHORE AND AFLOAT

- 5.1 Signals made ashore will be displayed at the RYS Lodge Flagstaff and advised on the event "Telegram" group.
- 5.2 When flag AP is displayed ashore, "1 minute" is replaced by "not less than 45 minutes". This changes Race Signals AP.

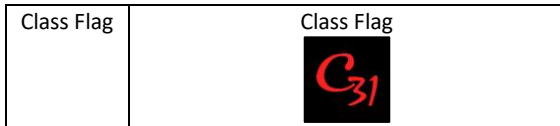
6. SCHEDULE

- 6.1 The intention of the Race Committee is to run nine races over the three days of the regatta.
- 6.2 The Race Committee intends to run no more than three races each day, however this may change if weather or other factors dictate.
- 6.3 On the last day of racing, no warning signal will be made after 1430.
- 6.4 The times shown in the table below are UTC plus 1 hour (British Summer Time).
- 6.5 Indicative tide times are for High Water Portsmouth.
- 6.6 Schedule.

| Day | Event Time or First Warning Signal | Notes |
|--|------------------------------------|---|
| Fri 30 Sept HW Ports 1500 BST 4.6m | 0900 | RO briefing by VHF and Telegram. |
| | 1100 | Race 1 Warning Signal. Races 2 & 3 asap after each finish. |
| | 1930 | Class Dinner at RYS |
| Sat 1 Oct HW Ports 1550 BST 4.4m | 0900 | RO briefing by VHF and Telegram. |
| | 1025 | Race 4 Warning Signal. Races 5 & 6 asap after each finish. |
| Sun 2 Oct HW Ports 1650 BST 4.2m | 0900 | RO briefing by VHF and Telegram. |
| | 1025 | Race 7 Warning Signal. Races 8 & 9 asap after each finish. |

7. CLASS FLAGS

The class flag is shown below.

**8. RACING AREA**

- 8.1 Racing will take place from a Committee Vessel in the Solent.
- 8.2 The approximate location of the committee vessel will be announced on VHF Channel 05 and the Event Telegram Group.

9. COURSES

- 9.1 The format of courses will be windward/leeward. See Addendum A.
- 9.2 The Race Committee intends to display the course signal with the compass bearing and distance to Mark 1 on the committee vessel no later than the warning signal.
- 9.3 With reference to gate marks 4p/4s, if only one gate mark is in position, that mark shall be rounded to port.
- 9.4 A chartlet showing the Solent Two Character Codes can be found in Addendum B of these Sailing Instructions to assist boats in locating the race area and Committee Vessel.

10. MARKS

- 10.1 With reference to Addendum A, marks 1, 1a, 4s & 4p will be orange inflatable marks.
- 10.2 The starting marks will be a committee vessel and a black inflatable mark.
- 10.3 The finishing marks will be a committee vessel and a black inflatable mark unless course W or WA is sailed when it will be a committee vessel and Mark 1.
- 10.4 When a new mark has been laid to change the next leg of a course it will be a black inflatable mark.

11. OBSTRUCTIONS

- 11.1 All yachts shall comply with Associated British Ports Notice to Mariners No 08 of 2022 giving details of a Precautionary Area and Moving Prohibited Zone (MPZ). The MPZ shall rank as an obstruction for the purposes of RRS 19 and 20.
- 11.2 Whilst racing, boats shall pass to the north of the Cowes Breakwater.

12. THE START

- 12.1 Races will be started by using RRS 26.
- 12.2 The starting line will be between a staff displaying an orange flag on the Committee Vessel at the starboard end and the course side of the port-end starting mark.
- 12.3 The Race Committee may broadcast the sail numbers of individually recalled boats on VHF CH 05, as soon as practicable after Flag X has been displayed. Delay or failure to do so is not grounds for redress.

13. CHANGE OF THE NEXT LEG OF THE COURSE

- 13.1 The position of any mark(s) may be adjusted by up to plus or minus 10 degrees relative to previous location and up to approximately 200 metres to windward or leeward without signalling Flag C, a direction signal, a length signal or a sound signal. This changes RRS 33.
- 13.2 When a change the next leg of the course has been signalled, the Race Committee will lay a new mark (or move the finishing line) and remove the original mark as soon as practicable. When in a subsequent change a new mark is replaced, it will be replaced by an original mark.
- 13.3 The RC will provide details of any changes using VHF 05.

14. THE FINISH

- 14.1 The finish line will be between a staff displaying a blue flag on the Committee Signal Vessel and the course side of the port-end finishing mark.

15. PENALTY SYSTEM

- 15.1 RRS 44.1 is changed so that the Two-Turns penalty is replaced by the One-Turn Penalty.
- 15.2 In RRS 44.2 insert after the first sentence: "However, if Mark 1a (spreader mark) is set, a boat may take a penalty for an incident in the zone around Mark 1 or on the leg between Mark 1 and Mark 1a, as soon as possible after leaving the zone around Mark 1a".

16. TIME LIMITS

- 16.1 The Mark 1 Time Limit, Race Time Limit (see RRS 35) and the Target Time are shown in the table below.

| Mark 1 Time Limit | Race Time Limit | Finishing Window | Target Race Time |
|-------------------|-----------------|------------------|------------------|
| 30 mins | 90 mins | 20 mins | 50 – 60 mins |

- 16.2 If no boat has passed Mark 1 within the Mark 1 Time Limit, or if no boat has finished within the Race Time Limit, the race shall be abandoned.
- 16.3 Finishing Window. The time limit for boats to finish after the first boat sails the course and finishes is 20 minutes.
- 16.4 Boats still sailing more than 20 minutes after the first boat finishes shall be awarded the points for the place behind the last boat, which has finished the race within this time.
- 16.5 Target time for each race will be 50 - 60 minutes. Failure to meet the target time will not be grounds for redress. This changes RR62.1(a).

17. HEARING REQUESTS

- 17.1 The protest limit is 90 minutes after the last boat has finished the last race of the day or the Race Committee signals no more racing today, whichever is later.
- 17.2 Hearing forms will be available at the Race Office.
- 17.3 Protest and requests for redress or reopening shall be delivered to the Race Office within the protest time limit.

Contact mobile phone numbers should be included on the protest form.

- 17.4 Notices will be posted no later than 30 minutes after the protest time limit to inform competitors of the hearings in which they are parties or named as witnesses. Hearings will be held in the protest room located at the RYS.

18. SCORING

- 18.1 One (1) race shall be completed to constitute a series for the Cape 31 UK National Championships.
- 18.2 When one (1) to four (4) races have been completed a boats series score shall be the total of all their scores.
- 18.3 When five (5) or more races have been completed, a boat's score will be the total of her race scores excluding her worst score.

19. SAFETY REGULATIONS

- 19.1 [DP] All boats shall sail past the committee vessel on starboard tack prior to start of the first race each day to enable the RC to check sail numbers.
- 19.2 [DP] A boat that retires from a race shall notify the Race Committee as soon as possible on VHF Ch 77 or by hailing an official regatta support boat or rib.

20. REPLACEMENT OF CREW OR EQUIPMENT

- 20.1 Substitution of competitors is not allowed without the prior written permission of the Race Committee.
- 20.2 Substitution of damaged or lost equipment is not allowed unless authorised in writing by the Race Committee. Requests for substitution shall be made to the committee at the first reasonable opportunity, which may be after the race.

21. EQUIPMENT AND MEASUREMENT CHECKS

- 21.1 A boat or equipment may be inspected at any time for compliance with the Class Rules and Sailing Instructions.

22. SUPPLIED BOATS

- 22.1 Does not apply.

23. OFFICIAL VESSELS

- 23.1 The Committee Vessel (Signal Vessel) will be a large motor launch Call Sign Castle Two.
- 23.2 Mark laying vessels will be RYS Ribs.

24. SUPPORT TEAMS

- 24.1 [DP] Team leaders, coaches, other support personnel and their coach and support boats shall stay outside areas where boats are racing from the time of the first Warning Signal of the day until racing has been concluded for the day. Between races, coach and support boats shall not approach, communicate with or transfer provisions or equipment to or from their supported boats unless in a medical or emergency requirement threatening the health of the crew or the flotation of the boat and only with the expressed permission of the OA.

- 24.2 All support person vessels shall carry a marine VHF radio and comply with RRS 37 'Search and Rescue Instructions'.

25. TRASH DISPOSAL

- 25.1 Trash may be placed aboard support or official boats.

26. BERTHING

- 26.1 Berthing is the responsibility of each boat.

27. HAUL OUT RESTRICTIONS

- 27.1 [DP] Boats shall be afloat by 1700 Thursday 29 September 2022.
- 27.2 [DP] Boats shall not be hauled out until the end of the event except with and according to the terms of prior written permission of the race committee.

28. DIVING EQUIPMENT AND PLASTIC POOLS

- 28.1 [DP] Underwater breathing apparatus and plastic pools or their equivalent shall not be used around competing boats between the preparatory signal of the first race and the end of the event.
- 28.2 No person shall undertake any swimming or diving activities of any kind around competing boats between the preparatory signal of the first race and the end of the event. This prohibited activity is also legislated under Cowes Harbour Commission [General Direction 4.4](#).
- 28.3 [DP] Competing boats shall not be cleaned below the waterline by any means between the preparatory signal of the first race and the end of the event.

29. PRIZES

- 29.1 Prizes will be awarded to the 1st, 2nd and 3rd boats in the series.
- 29.2 The **HYS Championship Trophy** will be awarded to the boat with the best overall series score.
- 29.3 Daily prizes will be awarded however Individual boats can only win one daily prize each during the regatta.
- 29.4 There will be a prize for the best overall series result from a visiting boat (as defined by the Cape 31 class).
- 29.5 Prizegiving will be held in the RYS as soon as possible after the last race has been completed and after any protest hearings.

30. RISK STATEMENT

- 30.1 Rule 3 of the Racing Rules of Sailing states: "The responsibility for a boat's decision to participate in a race or to continue racing is hers alone."
- 30.2 Sailing is by its nature an unpredictable sport and therefore involves an element of risk. By taking part in the event, each competitor agrees and acknowledges that:
- They are aware of the inherent element of risk involved in the sport and accept responsibility for the exposure of themselves, their crew and their boat to such inherent risk whilst taking part in the event;
 - They are responsible for the safety of themselves, their crew, their boat and their other property whether afloat or ashore;

- (c) They accept responsibility for any injury, damage or loss to the extent caused by their own actions or omissions;
- (d) Their boat is in good order, equipped to sail in the event and they are fit to participate;
- (e) The provision of a race management team, patrol boats, and other officials and volunteers by the event organiser does not relieve them of their own responsibilities;
- (f) The provision of patrol boat cover is limited to such assistance, particularly in extreme weather conditions, as can be practicably provided in the circumstances;
- (g) It is their responsibility to familiarise themselves with any risks specific to this venue or this event drawn to their attention in any rules and information produced for the venue or event and to attend any safety briefing held for the event.
- (h) They are responsible for ensuring that their boat is equipped and seaworthy so as to be able to face extremes of weather; that there is a crew sufficient in number, experience and fitness to withstand such

weather; and that the safety equipment is properly maintained, stowed and in date and is familiar to the crew.

31. **INSURANCE**

- 31.1 Each participating boat is required to hold insurance cover and in particular to hold adequate insurance against third party claims of at least £3 million.

32. **SOCIAL ARRANGEMENTS**

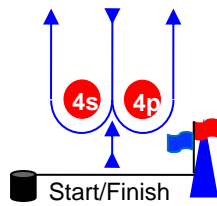
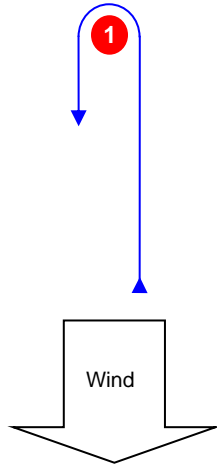
There is Cape 31 Class Dinner on the evening of Friday 30 September. Dress Code – Smart /Casual.

For those interested please refer to the Social Booking Form on the [RYS Website](#).

ADDENDUM A - COURSE ILLUSTRATIONS

Course Illustrations – Windward Leeward

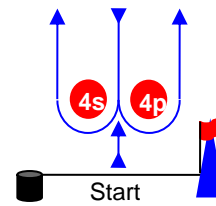
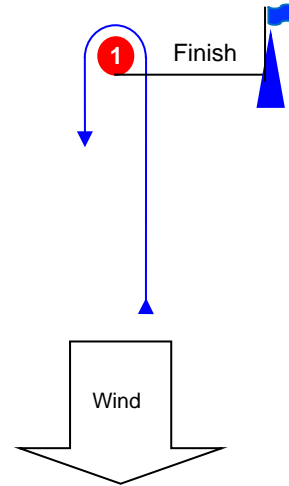
L



Course: Leeward finish

| Signal | Mark Rounding Order |
|-----------|--|
| L2 | Start – 1 – 4s/4p – 1 – Finish |
| L3 | Start – 1 – 4s/4p – 1 – 4s/4p – 1 – Finish |
| L4 | Start – 1 – 4s/4p – 1 – 4s/4p – 1 – 4s/4p – 1 – Finish |

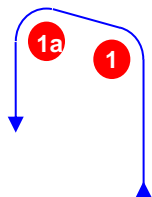
W



Course: Windward Finish

| Signal | Mark Rounding Order |
|-----------|--|
| W2 | Start – 1 – 4s/4p – Finish |
| W3 | Start – 1 – 4s/4p – 1 – 4s/4p – Finish |
| W4 | Start – 1 – 4s/4p – 1 – 4s/4p – 1 – 4s/4p – Finish |

LA / WA

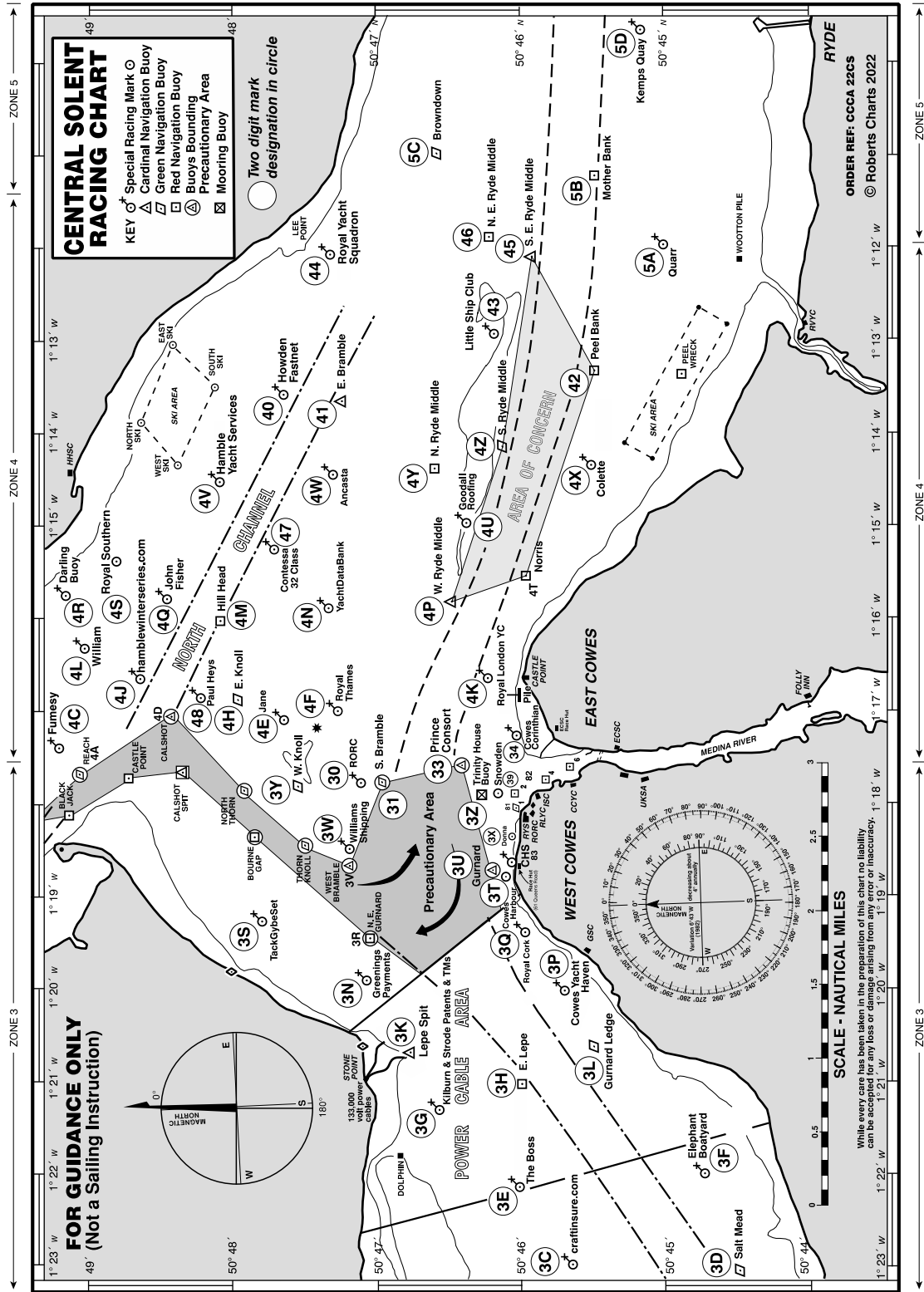


Course: Windward/leeward with offset mark 1a

| Signal | Mark Rounding Order |
|------------|--|
| LA2 | Start – 1 – 1a – 4s/4p – 1 – 1a – Finish |
| LA3 | Start – 1 – 1a – 4s/4p – 1 – 1a – 4s/4p – 1 – 1a – Finish |
| LA4 | Start – 1 – 1a – 4s/4p – 1 – 1a – 4s/4p – 1 – 1a – 4s/4p – 1 – 1a – Finish |
| WA2 | Start – 1 – 1a – 4s/4p – Finish |
| WA3 | Start – 1 – 1a – 4s/4p – 1 – 1a – 4s/4p – Finish |
| WA4 | Start – 1 – 1a – 4s/4p – 1 – 1a – 4s/4p – 1 – 1a – 4s/4p – Finish |

ADDENDUM B

See below a chartlet of the Racing Area showing the Solent Two Character Codes.



All correspondence should be directed to:

The Royal Yacht Squadron, The Castle, Cowes, UK, PO31 7QT. Tel: 01983 292191, Email: mail@rys.org.uk

ADDENDUM C



Telegram

We have set up an official [Telegram](#) group for receiving general information from the Race Office and Race Committee.

If you do not already have the Telegram app installed on your device, please follow the instructions below:

- **Apple iPhones – download and install via the App Store.**
<https://apps.apple.com/app/telegram-messenger/id686449807>
- **Android Phones – download and install via the Google Play Store.**
<https://play.google.com/store/apps/details?id=org.telegram.messenger>

To join the Telegram group please use either the link or the QR code below:

LINK:

<https://t.me/+G0n9RJt8I6RiOGM0>

QR:



All correspondence should be directed to:

The Royal Yacht Squadron, The Castle, Cowes, UK, PO31 7QT. Tel: 01983 292191, Email: mail@rys.org.uk