



## FIFES AT THE RYS REGATTA 11 – 14 JULY 2022

### ORGANIZING AUTHORITY ROYAL YACHT SQUADRON COWES

# SAILING INSTRUCTIONS

*The notation '[DP]' in a rule in the Sailing Instructions means that the penalty for a breach of that rule may, at the discretion of the protest committee, be less than disqualification.*

*The notation '[NP]' in a rule of the Sailing Instructions (SIs) means that a boat may not protest another boat for breaking that rule. This changes RRS 60.1(a).*

#### 1. RULES

- 1.1 The event is governed by the rules as defined in the Racing Rules of Sailing (RRS).
- 1.2 The RYA national prescriptions that apply are detailed in the NoR.
- 1.3 World Sailing Offshore Special Regulations (OSR) will apply. [www.sailing.org](http://www.sailing.org).
- 1.4 Notices to Mariners for the Ports of [Southampton](#), [Portsmouth](#) and [Cowes](#) apply.

#### 2. CHANGES TO SAILING INSTRUCTIONS

- 2.1 Any change to the Sailing Instructions (SIs) made ashore will be posted by 0900 on the day it will take effect, except that any change to the schedule of races will be posted by 2000 on the day before it will take effect.
- 2.2 Changes to a Sailing Instruction may be made on the water using VHF Ch 05 to communicate with competitors.

#### 3. COMMUNICATIONS WITH COMPETITORS

- 3.1 Notices to competitors will be posted on the Official Notice Board (ONB).
- 3.2 The ONB will be online at [www.rys.org.uk](http://www.rys.org.uk). There is no physical ONB.
- 3.3 The Race Office is at the Royal Yacht Squadron (RYS).
- 3.4 The race committee will make courtesy broadcasts to competitors on VHF Ch 05.
- 3.5 Competitors wishing to communicate with the Race Committee should do so on VHF Ch 77.

- 3.6 The Organizing Authority (OA) and Race Committee will also use a WhatsApp group to communicate with competitors. A link and QR code is shown in Addendum B.

#### 4. CODE OF CONDUCT

- 4.1 Competitors and support persons shall comply with reasonable requests from race officials.

#### 5. SIGNALS MADE ASHORE

- 5.1 Signals made ashore will be displayed at the Royal Yacht Squadron (RYS) main flagstaff and at the yardarm of the RYS Lodge Flagstaff.
- 5.2 Flag 'AP' over 'AP' with two sound signals means all racing is postponed and crews are advised not to go afloat. The first warning signal will be made not less than 45 minutes after the removal of AP over AP, at a time that will be announced on VHF Channel 05. The removal of this signal with one sound signal may be followed by a single 'AP'. This adds to RRS 27.3 and Race Signals.



#### 6. SCHEDULE OF RACES

- 6.1 The times shown in the table below are UTC plus 1 hour (British Summer Time - BST).
- 6.2 Indicative Tide Times are for High Water Portsmouth.
- 6.3 The Race Committee intends to run one (1) race per day. However additional races may be sailed to complete the programme because of weather or other reasons.
- 6.4 The Round the Island Race will be weather dependent, and the race committee may alter the schedule accordingly or substitute an alternative race or races.
- 6.5 For boats not wishing to race in the Round the Island Race an alternative around the cans race will be scheduled but will not count in the overall points scores.
- 6.6 On the last day of racing, no warning signal will be made after 1500.
- 6.7 Schedule

| DAY<br>HWP<br>(BST)         | TIME                    | FIRST<br>WARNING<br>SIGNAL | NOTES   |
|-----------------------------|-------------------------|----------------------------|---|
| Mon 11 Jul<br>HW 1000 4.2m  | 0900 – 1700<br><br>1930 |                            | Registration at RYS<br><br>Welcome reception at RYS |
| Tue 12 Jul<br>HW 1050 4.4m  | <br><br>1930 for 2000   | 1025                       | Race 1<br>Round the Cans Race<br>Owners' Dinner     |
| Wed 13 Jul<br>HW 1140 4.5m  |                         | 0625                       | Race 2<br>Round the Island Race                     |
| Thur 14 Jul<br>HW 1230 4.7m | <br><br>1800            | 1025                       | Race 3<br>Pursuit Race<br><br>Prizegiving in RYS    |

## 7. CLASS FLAGS

- 7.1 Class Flags as shown below shall be flown from the backstay at all times while racing. Boats without backstays shall display their class flag in a prominent position similar to the above. [DP]

|         |  |   |
|---------|--|---|
| Class 1 |  | NP 1<br> |
| Class 2 |  | NP 2<br> |

## 8. RACING AREA

- 8.1 The Racing Area shall be the waters of the Solent and Approaches. A chartlet showing the Solent Racing Area and Two Character Codes for racing marks can be found in Addendum A.

## 9. COURSES

- 9.1 The courses to be sailed will use a combination of specially laid inflatable marks, fixed racing marks, navigation marks and virtual marks. A list of available marks will be included with the Sailing Instructions.
- 9.2 Courses for round the cans races will be announced by VHF on the day using the Solent two-character codes. See Addendum A.
- 9.3 World Sailing RRS Appendix WP (Rules for racing around waypoints) will apply if virtual marks are included in courses.
- 9.4 All Classes will start and finish from the Royal Yacht Squadron Line, unless otherwise directed not later than one hour before the start of that race.

## 10. MARKS

- 10.1 The Race Committee intends to set courses in the Solent using fixed navigation buoys, racing marks and inflatable buoys using the Solent Two Character Codes. See more details in the racing chartlet and table in Addendum A
- 10.2 The Race Committee may also use Virtual Marks if required.
- 10.3 World Sailing RRS Appendix WP (Rules for racing around waypoints) will apply if virtual marks are included in courses. Further information may be found at: [https://www.sailing.org/tools/documents/AppendixWPRulesforWaypointsMay2021-\[27276\].pdf](https://www.sailing.org/tools/documents/AppendixWPRulesforWaypointsMay2021-[27276].pdf)

## 11. OBSTRUCTIONS

- 11.1 All boats shall comply with Associated British Ports [Notice to Mariners No 08 of 2022](#) giving details of a Precautionary Area and Moving Prohibited Zone (MPZ). The MPZ shall rank as an obstruction for the purposes of RRS 19 and 20. See Addendum C.
- 11.2 Yachts, in whatever direction they are racing, shall not pass: [DP]
- (a) North of the barrier off Durns Point east of Lymington
  - (b) North of Horse Sand Fort.
  - (c) South of No Man's Land Fort.

(d) South of Cowes breakwater.

- 11.3 Yachts shall not anchor or kedge in the Cowes Harbour fairway or within the area denoting power cables and gas pipes between Stone Point and Gurnard Bay, as shown on Admiralty Chart 2040, or within the mining ground area north east of Ryde Sand. [DP]
- 11.4 Protests for infringements of ABP and CHC Byelaws, General Directions and Notices to Mariners may only be brought by the Race Committee or Protest Committee who may initiate a protest as the result of a report from a yacht, the vessel affected, or one made by either ABP or CHC staff. This changes RRS 60. [DP]

## 12. THE START

- 12.1 Races will be started by using RRS 26 with the Warning Signal made 5 minutes before the Starting Signal.

| Time                  | Event                     | Signal                                       |
|-----------------------|---------------------------|--|
| Start minus 5 minutes | <b>Warning Signal</b>     | One gun.<br>Class flag displayed             |
| Start minus 4 minutes | <b>Preparatory Signal</b> | One gun.<br>Preparatory flag displayed       |
| Start minus 1 minute  | <b>One Minute Signal</b>  | Long horn sound.<br>Preparatory flag removed |
| Start                 | <b>Class START</b>        | One Gun.<br>Class flag removed               |

- 12.2 Boats whose warning signal has not been made shall avoid the starting area during the starting sequence for other races.
- 12.3 If any part of a boats hull is on the course side of the starting line during the **two minutes** before her starting signal and she is identified, the Race Committee will attempt to broadcast her sail number on VHF CH 05. Failure to make a broadcast or time it accurately will not be grounds for redress. This changes RRS 62.1(a).
- 12.4 If any part of a boat's hull is on the course side of the starting line at her starting signal and she is identified, the Race Committee will attempt to broadcast her sail number on VHF CH 05 after Flag X has been displayed. Any delay in broadcasting or failure to broadcast is not grounds for redress. This changes RRS 62.1(a).
- 12.5 All classes shall start on the RYS Start Line unless otherwise directed by the Race Committee not later than one hour before the start of that race.
- 12.6 The RYS starting line consists of an **inner line**, an **outer line** or a **combined line** and will be announced with the course.
- 12.7 The RYS Start Line is formed by bringing the RYS Main Flagstaff into line with the white line on the orange diamond on the Castle, on a bearing of approximately 346°(T) from the RYS Flagstaff and limited by limit marks.
- 12.8 Vertical light beams are installed to help identify the starting line transit. The intensity of the light beams intensifies as the transit is approached and at the approximate point of transit, the flagstaff momentarily obscures the lower rear light. These lights are a navigational aid only and do not constitute the starting line, nor will a start be postponed because of any failure of the lighting equipment.

## 12.9 Start Line descriptions.

- (a) For classes starting on the **RYS Outer Line** the limit marks are **Williams Shipping Buoy** to the north and **'Alpha'**, to the south.
- (b) For classes starting on the **RYS Inner Line** the limit marks are **'Alpha'** to the north and the **IDM** to the south.
- (c) For classes starting on the **Combined Line** the limit marks are **Williams Shipping Buoy** to the north and the **IDM** to the south.

## 12.10 The limit marks, all of which rank as starting marks and may not be precisely on the transit, are:

- (a) **'Alpha'** (a large Orange Inflatable mark approximately 500m to the north of the RYS Flagstaff)
- (b) **Inner Distance Mark (IDM)** (a large Orange Inflatable mark approximately 80m to the north of the RYS Flagstaff)
- (c) **Williams Shipping Buoy** (a yellow spherical racing buoy in approximate position 50° 47.20 N, 001° 18.55 W)

## 12.11 Direction of start:

- (a) The Race Committee will announce the intended direction of start not less than fifteen minutes before the start of each race. A signal displayed at the RYS Lodge Flagstaff will also indicate the direction of the start. A red flag indicates starting to the East. A green flag indicates starting to the West.
- (b) After a postponement this signal may be changed to reverse the direction of subsequent starts. Any such announcement will also be made on VHF Channel 05.

## 12.12 Races will be started by using RRS 26 with the Warning Signal made 5 minutes before the starting signal.

12.13 Classes will normally start at **ten-minute** intervals. The starting signal for one class will be followed five minutes later by the warning signal for the next class to start. However, in the event of a long postponement or other reason, the Race Committee may reduce this to a five-minute sequence so that the start of one class will be the warning signal of the next class. Any change to the ten-minute sequence will be announced on VHF CH 05.

## 12.14 The Race Committee intends to announce a start sequence countdown for each start on VHF Channel 05 accompanied by sound signals and signal flags displayed from the RYS flagstaff.

**13. CHANGE OF THE NEXT LEG OF THE COURSE**

## 13.1 Does not apply.

**14. THE FINISH**

## 14.1 Unless shortened in accordance with RRS, yachts shall finish on the Royal Yacht Squadron Finishing Line.

## 14.2 The Royal Yacht Squadron Finishing Line will be between the RYS main flagstaff and 'Alpha' a large Orange Inflatable buoy approximately 500m north of the RYS Main Flagstaff.

**15. PENALTY SYSTEM**

## 15.1 A boat that is identified as OCS at her starting signal shall receive, without a hearing, a time penalty of 3% of her

elapsed time rounded up or down to the nearest second. (To clarify, 0.5 shall be rounded up.)

## 15.2 OCS boats shall not attempt to return and restart as this will not remove the penalty.

## 15.3 No individual recall will be displayed.

## 15.4 A boat that starts more than 20 seconds before her starting signal shall be scored "Did Not Start" (DNS). This changes RRS 29.1 and 63.1.

## 15.5 RRS 44.1, 44.2, 44.3 shall not apply. A boat that may have broken a rule of RRS Part 2 or RRS 31 may take a time penalty unless she has caused serious damage or injury, in which case she shall retire. The penalty shall be 2% of her elapsed time rounded up or down to the nearest second. (To clarify, 0.5 shall be rounded up.) A boat taking such a penalty shall inform the race committee as soon as possible after finishing racing for the day.

## 15.6 A boat that has taken a penalty or retired shall complete an acknowledgment form available at the Race Office.

**16. TIME LIMITS**

## 16.1 The following time limits will apply to each class.

- (a) Race Time Limit. The time limit for all boats in each class to sail the course and finish is 300 minutes with the exception of the Round the Island (RTI) Race, which will be 2000 for all classes and Round the Cans Race which will be 1800 for all classes..

- (b) Finishing Window for all races excluding the RTI Race and Round the Cans races. If at least one boat from their class finishes within the Race Time Limit, the Race Time Limit is extended by 60 minutes.

## 16.2 If no boat has finished within the Race Time Limit, the race shall be abandoned.

## 16.3 Boats failing to finish within the Finishing Window shall be scored Did Not Finish (DNF) without a hearing. This changes RRS 35, A4 and A5.

## 16.4 The Race Committee may, in exceptional circumstances, extend the Race Time Limit or Finishing Window and this will be announced on VHF Ch 05. This changes RRS 35, A4 and A5.

**17. HEARING REQUESTS**

## 17.1 The protest limit is 90 minutes after the last boat has finished the last race of the day or the Race Committee signals no more racing today, whichever is later.

## 17.2 Hearing forms will be available at the Race Office. Protest and requests for redress or reopening shall be delivered to the Race Office within the protest time limit. Contact mobile phone numbers should be included on the protest form.

## 17.3 Notices will be posted no later than 30 minutes after the protest time limit to inform competitors of the hearings in which they are parties or named as witnesses. Hearings will be held in the protest room located at the CYH.

## 17.4 On the last scheduled day of racing a request for redress based on a protest committee decision shall be delivered no later than 30 minutes after the decision was posted. This changes RRS 62.2.

**18. SCORING**

- 18.1 One race is required to be completed to constitute a series.
- 18.2 All races are to count in the series.
- 18.3 Results will be calculated using the CIM Formula rating system and posted on the ONB.

**19. SAFETY REGULATIONS**

- 19.1 A boat that retires from a race shall notify the Race Committee as soon as possible on VHF CH 77 or by hailing an official regatta support boat or rib.
- 19.2 For safety reasons, yachts may run their engines in neutral at any time during the race. Engines may be put into gear and thrusters may be used at any time during the race for a yacht to take action in order to avoid collision.
- 19.3 A yacht that puts her engine in gear or uses her thruster at any time while racing shall submit a written declaration of "engine use" to the organising authority soon as practical after racing, stating the time the engine was in gear or thruster used, the reason for using it and the duration of use. *[DP]*
- 19.4 The Protest Committee will review all such declarations to determine whether any competitive advantage was gained. *[DP]*

**20. REPLACEMENT OF CREW OR EQUIPMENT**

- 20.1 Substitution of damaged or lost equipment, excluding small chandlery, is not allowed unless authorised in writing by the Race Committee. Requests for substitution shall be made to the committee at the first reasonable opportunity, which may be after the race.

**21. EQUIPMENT AND MEASUREMENT CHECKS**

- 21.1 A boat or equipment may be inspected at any time for compliance with IRC Rules, Class Rules and Sailing Instructions.

**22. SUPPLIED BOATS**

- 22.1 Does not apply.

**23. OFFICIAL VESSELS**

- 23.1 Mark laying vessels will be RYS Ribs.

**24. SUPPORT TEAMS**

- 24.1 Support person vessels must be registered with the OA prior to acting as a support vessel and shall be marked with identifying flags issued by the OA. Boats shall always display identifying flags while they are acting as a support person vessel.
- 24.2 All support person vessels shall carry a marine VHF radio and comply with RRS 37 'Search and Rescue Instructions'.

**25. TRASH DISPOSAL**

- 25.1 Trash disposal is the responsibility of each boat.

**26. BERTHING**

- 26.1 Berthing is not included in the entry fee. Alongside berthing or swinging moorings are available. The following organisations can assist with berthing:
  - (a) Cowes Yacht Haven - <https://www.cowesyachthaven.com>
  - (b) Shepards Marina - [https://www.cowesharbourcommission.co.uk/cowes\\_harbour\\_shepards\\_marina](https://www.cowesharbourcommission.co.uk/cowes_harbour_shepards_marina)
  - (c) Cowes Harbour Commission visitor moorings. [https://www.cowesharbourcommission.co.uk/visitor\\_moorings](https://www.cowesharbourcommission.co.uk/visitor_moorings)

**27. HAUL OUT RESTRICTIONS**

- 27.1 All boats shall be afloat by 1800 the day before the first scheduled race.
- 27.2 Boats shall not be hauled out during the event except with and according to the terms of prior written permission of the race committee.

**28. DIVING EQUIPMENT AND PLASTIC POOLS**

- 28.1 Underwater breathing apparatus and plastic pools or their equivalent shall not be used around competing boats from 1800 on the day before the first scheduled race until the end of the event.
- 28.2 No person shall undertake any swimming, underwater or diving activities of any kind within the harbour without a valid permit to dive from the Cowes Harbour Master or the manager of the marina you wish to dive at. This prohibited activity is legislated under Cowes Harbour Commission [General Direction 4.4](#).
- 28.3 Boats shall not be cleaned more than 10cm below the waterline by any means between the preparatory signal of the first race and the end of the event.

**29. PRIZES**

- 29.1 An overall points series will be run for each class, and prizes will be awarded to the first three yachts in each class.
- 29.2 Other prizes may be awarded at the discretion of the organising authority.

**30. RISK STATEMENT**

- 30.1 Rule 3 of the Racing Rules of Sailing states: "The responsibility for a boat's decision to participate in a race or to continue racing is hers alone."
- 30.2 Sailing is by its nature an unpredictable sport and therefore involves an element of risk. By taking part in the event, each competitor agrees and acknowledges that:
  - (a) They are aware of the inherent element of risk involved in the sport and accept responsibility for the exposure of themselves, their crew and their boat to such inherent risk whilst taking part in the event;
  - (b) They are responsible for the safety of themselves, their crew, their boat and their other property whether afloat or ashore;

- (c) They accept responsibility for any injury, damage or loss to the extent caused by their own actions or omissions;
- (d) Their boat is in good order, equipped to sail in the event and they are fit to participate;
- (e) The provision of a race management team, patrol boats, and other officials and volunteers by the event organiser does not relieve them of their own responsibilities;
- (f) The provision of patrol boat cover is limited to such assistance, particularly in extreme weather conditions, as can be practically provided in the circumstances;
- (g) It is their responsibility to familiarise themselves with any risks specific to this venue or this event drawn to their attention in any rules and information produced for the venue or event and to attend any competitor or safety briefing held for the event;

- (h) They are responsible for ensuring that their boat is equipped and seaworthy so as to be able to face extremes of weather; that there is a crew sufficient in number, experience and fitness to withstand such weather; and that the safety equipment is properly maintained, stowed and in date and is familiar to the crew.

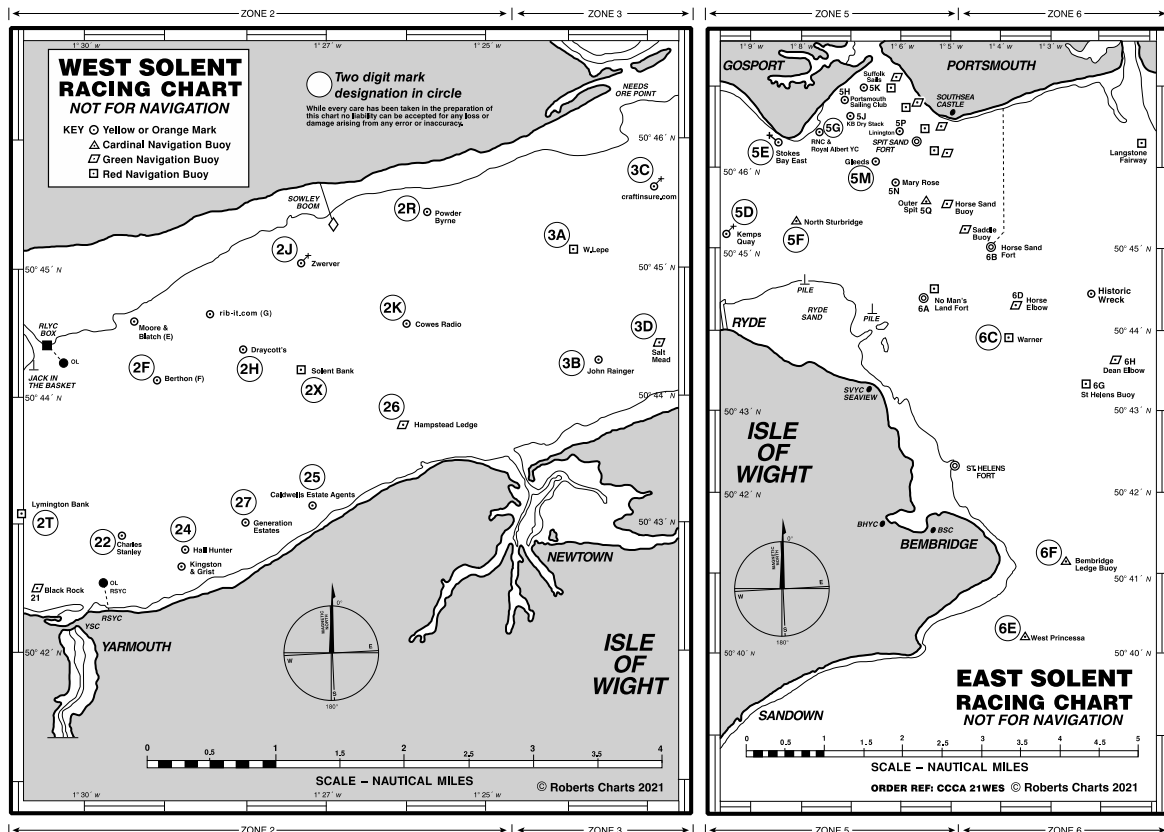
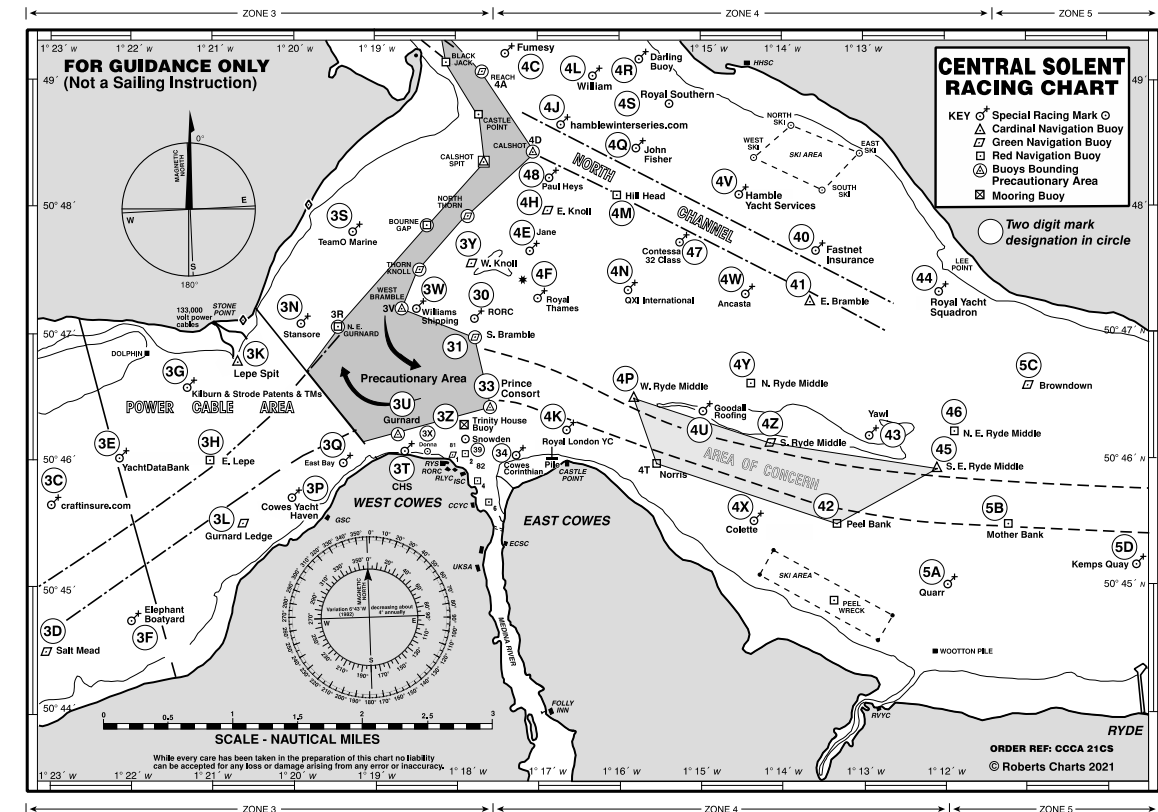
### 31. **INSURANCE**

All entrants shall be covered by a minimum Third-Party Liability indemnity of £3 million, or equivalent, and declare that such cover will be maintained in full force throughout the event.

\*\*\*\*\*

**ADDENDUM A**

See below chartlets of the Racing Area showing the Solent Two Character Codes.



All correspondence should be directed to:

The Royal Yacht Squadron, The Castle, Cowes, UK, PO31 7QT. Tel: 01983 292191, Email: [mail@rys.org.uk](mailto:mail@rys.org.uk)



## SOLENT AREA MARK CODES 2022

| Zone 1 Western Approaches |                                |        |          |          | Zone 4 Mid Solent (E)  |                          |        |          |          |
|---------------------------|--------------------------------|--------|----------|----------|--|--------------------------|--------|----------|----------|
| ID                        | Name                           | Colour | Lat N    | Long W   | ID   | Name                     | Colour | Lat N    | Long W   |
| 1A                        | Pevenil Ledge                  | R      | 50 36.41 | 01 56.10 | 4A   | Reach #                  | G      | 50 49.05 | 01 17.65 |
| 1B                        | Poole Bar No 1                 | G      | 50 39.29 | 01 55.14 | 4B   | Coronation               | Y      | 50 49.55 | 01 17.62 |
| 1C                        | Stoneways Marine               | Y      | 50 40.31 | 01 54.02 | 4C   | Fumesy*                  | Y      | 50 49.21 | 01 17.46 |
| 1D                        | The Rig Shop                   | Y      | 50 41.08 | 01 54.26 | 4D   | Calshot #                | BY     | 50 48.44 | 01 17.03 |
| 1E                        | Ledge Buoy                     | Y      | 50 41.50 | 01 41.60 | 4E   | Jane *                   | Y      | 50 47.67 | 01 17.00 |
| 1F                        | Needles Fairway                | RW     | 50 38.24 | 01 38.98 | 4F   | Royal Thames             | Y      | 50 47.20 | 01 17.00 |
| 1G                        | South West Shingles            | R      | 50 39.29 | 01 37.52 | 4G   | Cutter *                 | Y      | 50 49.45 | 01 16.91 |
| 1H                        | Bridge                         | YBY    | 50 39.63 | 01 36.88 | 4H   | East Knoll               | G      | 50 47.96 | 01 16.83 |
| 1J                        | Shingles Elbow                 | R      | 50 40.37 | 01 36.05 | 4J   | hamblewinterseries.com * | Y      | 50 48.63 | 01 16.57 |
| 1K                        | North Head                     | G      | 50 42.69 | 01 35.52 | 4K   | Royal London YC          | Y      | 50 46.15 | 01 16.65 |
| 1L                        | Needles Lighthouse             | RW     | 50 39.73 | 01 35.50 | 4L   | William *                | Y      | 50 49.03 | 01 16.49 |
| 1M                        | Warden                         | G      | 50 41.48 | 01 33.55 | 4M   | Hill Head                | R      | 50 48.07 | 01 16.00 |
| 1N                        | North East Shingles            | BYB    | 50 41.96 | 01 33.41 | 4N   | YachtDataBank            | Y      | 50 47.27 | 01 15.90 |
| 11                        | East Hook                      | R      | 50 40.58 | 01 55.23 | 4P   | West Ryde Middle         | YBY    | 50 46.48 | 01 15.79 |
| 12                        | Mid Bay                        | Y      | 50 42.60 | 01 40.80 | 4Q   | John Fisher*             | Y      | 50 48.46 | 01 15.72 |
| Zone 2 West Solent        |                                |        |          |          | 4R   | Darling Buoy *           | Y      | 50 49.18 | 01 15.71 |
| 2A                        | Chewton Glen                   | Y      | 50 42.79 | 01 32.53 | 4S   | Royal Southern*          | Y      | 50 48.86 | 01 15.43 |
| 2B                        | Dunford                        | Y      | 50 43.38 | 01 31.54 | 4T   | Norris #                 | R      | 50 45.97 | 01 15.51 |
| 2C                        | Colten                         | Y      | 50 43.83 | 01 30.86 | 4U   | Goodall Roofing          | Y      | 50 46.43 | 01 15.09 |
| 2F                        | Berthon                        | Y      | 50 44.20 | 01 29.22 | 4V   | Hamble Yacht Services    | Y      | 50 48.13 | 01 14.64 |
| 2H                        | Draycott's                     | Y      | 50 44.30 | 01 28.16 | 4W   | Ancasta                  | Y      | 50 47.33 | 01 14.59 |
| 2J                        | Zwerver                        | Y      | 50 45.11 | 01 27.34 | 4X   | Colette                  | Y      | 50 45.53 | 01 14.39 |
| 2K                        | Cowes Radio                    | Y      | 50 44.83 | 01 26.09 | 4Y   | North Ryde Middle        | R      | 50 46.61 | 01 14.31 |
| 2R                        | Powder Byrne                   | Y      | 50 45.43 | 01 25.89 | 4Z   | South Ryde Middle        | G      | 50 46.13 | 01 14.16 |
| 2T                        | Lymington Bank                 | R      | 50 43.10 | 01 30.85 | 41   | Howden Fastnet           | Y      | 50 47.66 | 01 13.65 |
| 2V                        | "v"                            | Y      | 50 43.30 | 01 31.30 | 40   | East Bramble             | BYB    | 50 47.23 | 01 13.64 |
| 2X                        | Solent Bank                    | R      | 50 44.23 | 01 27.37 | 42   | Peel Bank                | R      | 50 45.49 | 01 13.35 |
| 20                        | Sconce                         | BY     | 50 42.53 | 01 31.43 | 43   | Little Ship Club         | Y      | 50 46.16 | 01 13.09 |
| 21                        | Black Rock                     | G      | 50 42.57 | 01 30.59 | 44   | Royal Yacht Squadron     | Y      | 50 47.31 | 01 12.10 |
| 22                        | Charles Stanley                | Y      | 50 42.86 | 01 29.40 | 45   | South East Ryde Middle   | YB     | 50 45.93 | 01 12.10 |
| 24                        | Hall Hunter                    | Y      | 50 42.86 | 01 28.42 | 46   | North East Ryde Middle   | R      | 50 46.21 | 01 11.88 |
| 25                        | Caldwells Estate Agents        | Y      | 50 43.15 | 01 27.49 | 47   | Contessa 32 Class        | Y      | 50 47.70 | 01 15.25 |
| 26                        | Hamstead Ledge                 | G      | 50 43.87 | 01 26.18 | 48   | Paul Heys *              | Y      | 50 48.21 | 01 16.68 |
| 27                        | Generation                     | Y      | 50 42.97 | 01 28.16 | Zone 5 East Solent   |                          |        |          |          |
| Zone 3 Mid Solent (W)     |                                |        |          |          | 5A   | Quarr                    | Y      | 50 45.03 | 01 11.89 |
| 3A                        | West Lepe                      | R      | 50 45.24 | 01 24.09 | 5B   | Mother Bank              | R      | 50 45.49 | 01 11.21 |
| 3B                        | Shoosmiths                     | Y      | 50 44.36 | 01 23.80 | 5C   | Browndown                | G      | 50 46.57 | 01 10.95 |
| 3C                        | craftinsure.com                | Y      | 50 45.64 | 01 23.12 | 5D   | Kemps Quay               | Y      | 50 45.18 | 01 09.65 |
| 3D                        | Salt Mead                      | G      | 50 44.51 | 01 23.04 | 5E   | Greenings FinTech        | Y      | 50 46.26 | 01 08.76 |
| 3E                        | The Boss                       | Y      | 50 46.13 | 01 22.19 | 5F   | North Sturbridge         | BY     | 50 45.33 | 01 08.23 |
| 3F                        | Elephant Boatyard              | Y      | 50 44.72 | 01 21.95 | 5G   | Baker Trayte Marine      | Y      | 50 46.42 | 01 07.90 |
| 3G                        | Kilburn & Strode Patents & TMs | Y      | 50 46.58 | 01 21.46 | 5H   | Portsmouth SC            | Y      | 50 46.82 | 01 07.35 |
| 3H                        | East Lepe                      | R      | 50 45.93 | 01 21.07 | 5J   | KB Dry Stack             | Y      | 50 46.61 | 01 07.29 |
| 3K                        | Lepe Spit                      | YB     | 50 46.78 | 01 20.64 | 5K   | Suffolk Sails            | Y      | 50 47.08 | 01 06.78 |
| 3L                        | Gurnard Ledge                  | G      | 50 45.51 | 01 20.59 | 5M   | Gleeds                   | Y      | 50 46.11 | 01 06.52 |
| 3N                        | Greenings Payments *           | Y      | 50 47.07 | 01 19.88 | 5N   | Mary Rose                | Y      | 50 45.80 | 01 06.20 |
| 3P                        | Cowes Yacht Haven              | Y      | 50 45.68 | 01 19.98 | 5P   | Linnington               | Y      | 50 46.36 | 01 06.08 |
| 3Q                        | Royal Cork                     | Y      | 50 45.97 | 01 19.45 | 5Q   | Outer Spit ©             | YB     | 50 45.44 | 01 05.46 |
| 3R                        | North East Gurnard #           | R      | 50 47.06 | 01 19.42 | 5Q   | Fairhall West @          | Y      | 50 46.81 | 01 10.40 |
| 3S                        | TackGybeSet*                   | Y      | 50 47.81 | 01 19.25 | 51   | SBSC Central @           | Y      | 50 46.60 | 01 09.85 |
| 3T                        | Cowes Harbour (no topmark)     | Y      | 50 46.10 | 01 18.87 | <p>Most yellow race marks are seasonal March-November</p> <p>* These marks may be in place all year round</p> <p># Only used for passing and keeping boats out of channel, not for ordinary rounding.</p> <p>Use of other main channel marks should be minimised</p> <p>© 5Q Outer Spit may only be used if given prior consent by QHM, which must be sought in weekday office hours</p> <p>@ Sundays: SBSC only except Cowes Week</p> |                          |        |          |          |
| 3U                        | Gurnard                        | BY     | 50 46.22 | 01 18.84 |  |                          |        |          |          |
| 3V                        | West Bramble #                 | YBY    | 50 47.20 | 01 18.65 |  |                          |        |          |          |
| 3W                        | Williams Shipping *            | Y      | 50 47.20 | 01 18.55 |  |                          |        |          |          |
| 3X                        | Donna                          | Y      | 50 46.10 | 01 18.43 |  |                          |        |          |          |
| 3Y                        | West Knoll                     | Y      | 50 47.43 | 01 17.84 |  |                          |        |          |          |
| 3Z                        | Trinity House Buoy             | Y      | 50 46.31 | 01 17.75 |  |                          |        |          |          |
| 30                        | RORC *                         | Y      | 50 47.12 | 01 17.72 |  |                          |        |          |          |
| 31                        | South Bramble                  | G      | 50 46.98 | 01 17.72 |  |                          |        |          |          |
| 33                        | Prince Consort                 | BY     | 50 46.41 | 01 17.56 |  |                          |        |          |          |
| 34                        | Cowes Corinthian               | Y      | 50 46.15 | 01 17.20 |  |                          |        |          |          |
| 39                        | Snowden                        | Y      | 50 46.20 | 01 17.75 |  |                          |        |          |          |

## SOLENT AREA MARK CODES 2022

| Zone 6 Eastern Approaches   |                      |        |          |          | Zone 8 Local Marks & Positions |                        |        |       |        |
|---|----------------------|--------|----------|----------|--------------------------------|------------------------|--------|-------|--------|
| ID  | Name                 | Colour | Lat N    | Long W   | ID                             | Name                   | Colour | Lat N | Long W |
| 6A  | No Man's Land Fort   | B      | 50 44.40 | 01 05.70 | 8A                             |                        |        |       |        |
| 6B  | Horse Sand Fort      | B      | 50 45.01 | 01 04.34 | 8B                             |                        |        |       |        |
| 6C  | Warner               | R      | 50 43.87 | 01 03.99 | 8C                             |                        |        |       |        |
| 6D  | Horse Elbow          | G      | 50 44.26 | 01 03.88 | 8D                             |                        |        |       |        |
| 6E  | West Princessa       | YBY    | 50 40.16 | 01 03.65 | 8E                             |                        |        |       |        |
| 6F  | Bembridge Ledge Buoy | BYB    | 50 41.15 | 01 02.81 | 8F                             |                        |        |       |        |
| 6G  | St Helens Buoy       | R      | 50 43.36 | 01 02.41 | 8G                             |                        |        |       |        |
| 6H  | Dean Elbow           | G      | 50 43.69 | 01 01.88 | 8H                             |                        |        |       |        |
| 6J  | Nab East             | R      | 50 42.86 | 01 00.80 | 8J                             |                        |        |       |        |
| 6K  | Horse Tail           | G      | 50 43.23 | 01 00.23 | 8K                             |                        |        |       |        |
| 6L  | Winner               | YB     | 50 45.10 | 01 00.10 | 8L                             |                        |        |       |        |
| 6M  | Nab End              | R      | 50 42.63 | 00 59.49 | 8M                             |                        |        |       |        |
| 6N  | Dean Tail            | G      | 50 42.99 | 00 59.17 | 8N                             |                        |        |       |        |
| 6P  | New Grounds          | BYB    | 50 41.84 | 00 58.49 | 8P                             |                        |        |       |        |
| 6R  | Nab Tower            | B      | 50 40.08 | 00 57.15 | 8Q                             |                        |        |       |        |
| 6S  | Outer Nab No 2       | BYB    | 50 38.43 | 00 57.70 | 8R                             |                        |        |       |        |
| Zone 7 Southampton Water  |                      |        |          |          | 8S                             |                        |        |       |        |
| 7A  | Gymp                 | R      | 50 53.07 | 01 24.16 | 8T                             |                        |        |       |        |
| 7B  | Hythe Knock          | R      | 50 52.83 | 01 23.81 | 8U                             |                        |        |       |        |
| 7C  | No 1 Swinging        | G      | 50 53.00 | 01 23.44 | 8V                             |                        |        |       |        |
| 7D  | Weston Shelf         | G      | 50 52.71 | 01 23.26 | 8W                             |                        |        |       |        |
| 7E  | Hythe 5              | Y      | 50 52.24 | 01 23.18 | 8X                             |                        |        |       |        |
| 7F  | Jib *                | Y      | 50 52.96 | 01 23.06 | 8Y                             |                        |        |       |        |
| 7H  | Moorhead             | G      | 50 52.55 | 01 22.90 | 8Z                             |                        |        |       |        |
| 7J  | Deans Elbow          | R      | 50 52.20 | 01 22.85 | 80                             |                        |        |       |        |
| 7K  | NW Netley            | G      | 50 52.31 | 01 22.73 | 81                             |                        |        |       |        |
| 7L  | Hovercraft 4         | Y      | 50 52.66 | 01 22.42 | 82                             |                        |        |       |        |
| 7N  | SWSA                 | Y      | 50 51.76 | 01 22.28 | 83                             |                        |        |       |        |
| 7P  | Hovercraft 3         | Y      | 50 52.43 | 01 22.01 | 84                             |                        |        |       |        |
| 7Q  | Netley               | G      | 50 52.03 | 01 21.81 | 85                             |                        |        |       |        |
| 7R  | Lains Lake           | R      | 50 51.59 | 01 21.65 | 86                             |                        |        |       |        |
| 7S  | Deans Lake           | R      | 50 51.40 | 01 21.59 | 87                             |                        |        |       |        |
| 7T  | Hovercraft 2         | Y      | 50 52.21 | 01 21.58 | 88                             |                        |        |       |        |
| 7U  | Hound                | G      | 50 51.68 | 01 21.52 | Zone 9 Laid Marks              |                        |        |       |        |
| 7V  | Hovercraft 1         | Y      | 50 51.99 | 01 21.16 | 9A                             | Windward Laid Mark     |        |       |        |
| 7W  | After Barn           | G      | 50 51.53 | 01 20.82 | 9B                             | Windward Spreader Mark |        |       |        |
| 7Y  | Cadland              | R      | 50 51.02 | 01 20.54 | 9C                             | Leeward Laid Mark      |        |       |        |
| 7Z  | Greenland            | G      | 50 51.11 | 01 20.38 | 9D                             | Leeward Spreader Mark  |        |       |        |
| 70  | Cathead *            | Y      | 50 50.61 | 01 19.24 | 9E                             | Leeward Gate           |        |       |        |
| 71  | Mark *               | Y      | 50 49.56 | 01 18.94 | 9F                             | Middle Gate            |        |       |        |
| 72  | Hamble Point         | YB     | 50 50.15 | 01 18.66 | 9G                             | Wing Mark              |        |       |        |
| 73  | Bald Head            | G      | 50 49.80 | 01 18.07 | 9H                             | Outer Distance Mark    |        |       |        |
| 74  | Sposa *              | Y      | 50 49.66 | 01 17.59 | 9J                             | Finish Mark            |        |       |        |
| 75  | Magazine *           | Y      | 50 52.83 | 01 23.98 | 9K                             | Far Windward Mark      |        |       |        |
| 76  | Test                 | R      | 50 52.59 | 01 23.45 | 9L                             | Far Windward Spreader  |        |       |        |
| 77  | Fawley Deep          | G      | 50 50.42 | 01 19.19 | 9M                             | Near Windward Mark     |        |       |        |
| 78  | Hook #               | G      | 50 49.52 | 01 18.30 | 9N                             | Near Windward Spreader |        |       |        |
| <p># Only used for passing and keeping boats out of channel, not for ordinary rounding.<br/>Use of other main channel marks should be minimised</p> <p>Most yellow race marks are seasonal March-November</p> <p>* These marks may be in place all year round</p> <p>Mark codes are in order by longitude from west to east, except Zone 2 is split into Mainland, Middle, and Island Side.<br/>Marks added since 2010 may be at the end of their Zones</p> <p>ID Codes 3J, 3M, 32, 5L, 5R, 5S, 6Q, 7G, 7M and 7X are spare</p> |                      |        |          |          | 9P                             |                        |        |       |        |
|   |                      |        |          |          | 9Q                             |                        |        |       |        |
|   |                      |        |          |          | 9R                             |                        |        |       |        |
|   |                      |        |          |          | 9S                             |                        |        |       |        |
|   |                      |        |          |          | 9T                             |                        |        |       |        |
|   |                      |        |          |          | 9U                             |                        |        |       |        |
|   |                      |        |          |          | 9V                             |                        |        |       |        |
|   |                      |        |          |          | 9W                             |                        |        |       |        |
|   |                      |        |          |          | 9X                             |                        |        |       |        |
|   |                      |        |          |          | 9Y                             |                        |        |       |        |
|   |                      |        |          |          | 9Z                             |                        |        |       |        |

E&amp;OE

Solent Area Marks

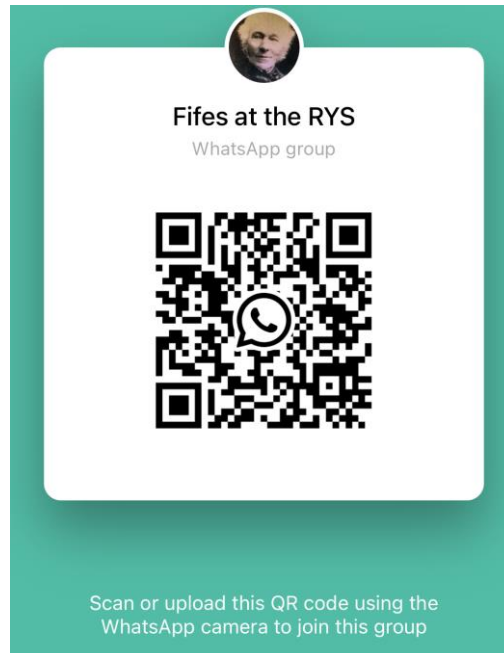
07 February 2022



## ADDENDUM B

We have set up an unofficial WhatsApp group for receiving general information from the Race Office. To join the WhatsApp group please use the link below or QR Code:

<https://chat.whatsapp.com/LfHBG86jySxJAc8AfJP3wI>



### Instructions on using QR codes:

- For Apple phones: Please open your camera app and point it at the QR code and then follow the link it displays on your screen.
- For Android phones: Please obtain a barcode scanning app from the Google Play Store such as "Barcode Scanner", open the barcode scanning app and point it at the QR code and then follow the link it displays on your screen.

### Alternatively use this link:

Open this link to join my WhatsApp Group: <https://chat.whatsapp.com/KAuvRw75QV02KPYQrrY11F>

## ADDENDUM C



## NOTICE TO MARINERS No 08 of 2022

### Port of Southampton – Precautionary Area (Thorn Channel)

1. **NOTICE IS HEREBY GIVEN** in support of planning for the forthcoming busy season for all users of The Solent that all vessels navigating within the Port of Southampton shall ensure that a vessel **greater than 220 metres in length overall** shall be given a 'clear channel' in the area between the Hook Buoy and the Prince Consort Buoy (hereinafter referred to as 'The Precautionary Area' - (see Chartlet 1)).

The term 'clear channel' is defined as: 'a clear and unimpeded passage ahead of a vessel when transiting the Precautionary Area'.

The term 'clear channel vessel' is defined as: 'a vessel greater than 220 metres in length overall which requires a clear and unimpeded passage ahead when transiting the Precautionary Area'.

Vessels may enter 'The Precautionary Area' maintaining a safe distance astern of a 'clear channel vessel'.

2. Two vessels each having a length **greater than 180 metres length overall** shall not pass or overtake each other between Hook Buoy and a line drawn due south of West Bramble Buoy.
3. **Moving Prohibited Zone (MPZ)** (See Chartlet 1)

Southampton Harbour Byelaws 2003 Byelaw No 11 enforces the requirement that all vessels **over 150 metres in length overall** when navigating within 'The Precautionary Area' referred to in this notice are automatically allocated a 'Moving Prohibited Zone' (MPZ). The MPZ is defined as an area extending 1000 metres ahead of the bow and 100 metres from the ship's side on both sides of any vessel of **over 150 metres in length overall** whilst it is navigating within 'The Precautionary Area' (See Chartlet 1).

The master of a **small vessel** (defined in Southampton Harbour Byelaws 2003 Byelaw No 3 as any vessel of less than 20 metres in length or a sailing vessel) shall ensure that the vessel does not enter an MPZ.

For the purpose of indicating the presence of the MPZ the master of any vessel of **over 150 metres length overall** shall display on the vessel, where it can best be seen, by day, a black cylinder, and by night, 3 all round red lights in a vertical line.

## Chartlet 1

