



## J70 SOUTH COAST CHAMPIONSHIPS 14 – 15 MAY 2022

**ORGANISING AUTHORITY  
ROYAL YACHT SQUADRON  
COWES, UK**

# SAILING INSTRUCTIONS

*The notation '[DP]' in a rule in the Sailing Instructions means that the penalty for a breach of that rule may, at the discretion of the protest committee, be less than disqualification.*

### 1. RULES

- 1.1 The event is governed by the rules as defined in the Racing Rules of Sailing (RRS).
- 1.2 Notice to Mariners for the Ports of Southampton, Portsmouth and Cowes apply.

### 2. CHANGES TO SAILING INSTRUCTIONS

- 2.1 Any change to the Sailing Instructions (SIs) made ashore will be posted by 0900 on the day it will take effect, except that any change to the schedule of races will be posted by 2000 on the day before it will take effect.
- 2.2 Changes to a Sailing Instruction may be made on the water using VHF Radio to communicate with competitors.

### 3. COMMUNICATIONS WITH COMPETITORS

- 3.1 Notices to competitors will be posted on the Official Notice Board (ONB).
- 3.2 The ONB will be online at [www.rys.org.uk](http://www.rys.org.uk).
- 3.3 The Race Office is in the Royal Yacht Squadron (RYS).
- 3.4 The Race Committee intends to broadcast race information and course information by VHF Ch 05.
- 3.5 Competitors wishing to communicate with the Race Committee should do so on VHF Ch 77.
- 3.6 An Event WhatsApp group will be used to communicate with competitors and to draw attention to the official notice board – see Addendum C for QR Code and joining instructions.
- 3.7 While racing, except in an emergency, a boat shall not make voice or data transmissions and shall not receive

voice or data communication that is not available to all boats.

### 4. CODE OF CONDUCT

- 4.1 Competitors and support persons shall comply with reasonable requests from race officials.

### 5. SIGNALS MADE ASHORE AND AFLOAT

- 5.1 Signals made ashore will be displayed at the RYS Lodge Flagstaff and may be communicated by VHF and the Event WhatsApp Group.
- 5.2 When flag AP is displayed ashore, "1 minute" is replaced by "not less than 45 minutes". This changes Race Signals AP.

### 6. SCHEDULE OF RACES

- 6.1 The intention of the Race Committee is to run six (6) races over the two days of the regatta. The target time for each race will be 50 minutes.
- 6.2 On the last day of racing, no warning signal will be made after 1430.
- 6.3 Times shown are UTC+ 1 Hour (BST).
- 6.4 Tide times are for High Water Portsmouth.
- 6.5 The Daily Briefing by the Race Officer will be conducted on WhatsApp.
- 6.6 Schedule:

Date	Event	Time
Sat 14 May HWP 1050 – 4.4m (BST)	Briefing Race 1 Race 2 Race 3	0900 by WhatsApp 1055 1 <sup>st</sup> Warning Signal ASAP after finish. ASAP after finish.
Sun 15 May HWP 1120 – 4.5m (BST)	Briefing Race 4 Race 5 Race 6 Prizegiving	0900 by WhatsApp 1025 1 <sup>st</sup> Warning Signal ASAP after finish. ASAP after finish. ASAP after racing in RYS.

### 7. CLASS FLAGS

The class flag will be ICOS flag J.



### 8. RACING AREA

- 8.1 Racing will take place from a Committee Vessel in the Central and Eastern Solent, including the Bramble Bank.
- 8.2 The Race Committee intends to announce approximate location of the committee vessel approximately 90 minutes before the first warning signal on both VHF Ch05 and on the Event WhatsApp group.

**9. COURSES**

- 9.1 The format for racing will be windward/leeward courses. See Addendum A.
- 9.2 The race committee intends to display the course with the compass bearing and distance in nautical miles to mark 1 on the committee vessel no later than the warning signal.
- 9.3 With reference to the gate marks 4p / 4s, if only one gate mark is in position, that mark shall be rounded to port.
- 9.4 A chartlet showing the Central Solent two-character codes can be found at Addendum B of these SIs to assist boats in locating the race area and committee vessel.

**10. MARKS**

- 10.1 With reference to Addendum A, marks 1, 1a, 4s & 4p will be orange inflatable marks.
- 10.2 The starting marks will be the committee vessel and a black inflatable mark.
- 10.3 The finishing marks will be a committee vessel and a black inflatable mark.
- 10.4 When a new mark has been laid to change the next leg of a course it will be a black inflatable mark.

**11. OBSTRUCTIONS**

- 11.1 All yachts shall comply with Associated British Ports Notice to Mariners No 08 of 2022 giving details of a Precautionary Area and Moving Prohibited Zone (MPZ). The MPZ shall rank as an obstruction for the purposes of RRS 19 and 20.
- 11.2 Whilst racing, boats shall pass to the north of the Cowes Breakwater.

**12. THE START**

- 12.1 To alert boats that a race or sequence of races will begin soon, an orange start line flag will be displayed with multiple sound signals not less than 5 minutes before a warning signal is displayed.
- 12.2 The starting line will be between a staff displaying an orange flag on the committee vessel at the starboard end and the course side of the port-end starting mark.
- 12.3 If any part of a boat's hull is on the course side of the starting line at her starting signal and she is identified, the race committee, after Flag X has been displayed, will attempt to hail her bow number, sail number or boat name as soon as practicable using VHF Ch05. Failure to hail her number, failure of her to hear such a hail, or the order in which the boats are hailed will not be grounds for a redress request. This changes RRS 62.1(a).

**13. CHANGE OF THE NEXT LEG OF THE COURSE**

- 13.1 The position of any mark(s) may be adjusted by up to plus or minus 10 degrees relative to previous location and up to approximately 200 metres to windward or leeward without signalling Flag C, a direction signal, a length signal or a sound signal. This changes RRS 33.
- 13.2 When a change the next leg of the course has been signalled, the Race Committee will lay a new mark (or move the finishing line) and remove the original mark as

soon as practicable. When in a subsequent change a new mark is replaced, it will be replaced by an original mark.

**14. THE FINISH**

- 14.1 The finish line will be between a staff displaying a blue flag on the Committee Vessel and the course side of the port-end finishing mark.

**15. PENALTY SYSTEM**

- 15.1 RRS 44.1 is changed so that a boat may take a One-Turn penalty when she may have broken one or more rules of Part 2 or rule 31 in an incident whilst racing. However, when she may have broken one or more rules of Part 2 while in the zone around a mark other than a starting mark, her penalty shall be a Two-Turns penalty.

**16. TIME LIMITS**

- 16.1 The following time limits will apply.
  - (a) The time limit for the first boat to sail the course and finish is 90 minutes.
  - (b) Finishing Window. The time limit for boats to finish after the first boat sails the course and finishes is 20 minutes. Boats that are still racing but do not finish within the finishing window, will be scored Time Limit Expired (TLE). The TLE score will be equal to the number of boats to finish plus 2 points. This changes RRS 35, A5.1, A5.2 and A10.

**17. HEARING REQUESTS**

- 17.1 The protest limit is 90 minutes after the last boat has finished the last race of the day or the Race Committee signals no more racing today, whichever is later.
- 17.2 Hearing forms will be available at the Race Office. Protest and requests for redress or reopening shall be delivered to the Race Office within the protest time limit. Contact mobile phone numbers should be included on the protest form.
- 17.3 Notices will be posted no later than 30 minutes after the protest time limit to inform competitors of the hearings in which they are parties or named as witnesses. Hearings will be held in the protest room located at the RYS.
- 17.4 On the last scheduled day of racing a request for redress based on a protest committee decision shall be delivered no later than 30 minutes after the decision was posted. This changes RRS 62.2.
- 17.5 Protests and hearings may be heard virtually where this is expedient, agreed by all parties and acceptable to the chair of the Protest Committee. Failure to offer this option will not be grounds for a redress request.

**18. SCORING**

- 18.1 One (1) race shall be completed to constitute a series for the J70 South Coast Championships.
- 18.2 When one (1) to four (4) races have been completed a boats series score shall be the total of all their scores.
- 18.3 When five (5) or more races have been completed, a boat's score will be the total of her race scores excluding her worst score.

**19. SAFETY REGULATIONS**

- 19.1 Boats should check in with the race committee each day before the warning signal of their first race, by passing close by the starboard side of the committee vessel on port tack and await acknowledgement from the race committee. *[DP]*
- 19.2 A boat that retires from a race shall notify the Race Committee as soon as possible on VHF Ch 77 or by hailing an official event support boat or RIB. *[DP]*

**20. REPLACEMENT OF CREW OR EQUIPMENT**

- 20.1 Substitution of competitors is not allowed without the prior written permission of the Race Committee.
- 20.2 Substitution of damaged or lost equipment is not allowed unless authorised in writing by the Race Committee. Requests for substitution shall be made to the committee at the first reasonable opportunity, which may be after the race.

**21. EQUIPMENT AND MEASUREMENT CHECKS**

- 21.1 A boat or equipment may be inspected at any time for compliance with the Class Rules and Sailing Instructions.

**22. SUPPLIED BOATS**

- 22.1 Does not apply.

**23. OFFICIAL VESSELS**

- 23.1 The Committee Vessel (Signal Vessel) will be a motor launch Call Sign 'Castle Two'.
- 23.2 Mark laying vessels will be RYS RIBs.

**24. SUPPORT TEAMS**

- 24.1 All support vessels shall carry a marine VHF radio and Support boats shall stay outside areas where boats are racing from the time of the preparatory signal for each start thereafter until all boats have finished or retired or the Race Committee signals a postponement, general recall or abandonment. *[DP]*
- 24.2 *[DP]* All support vessels shall carry a marine VHF radio and comply with RRS 37 'Search and rescue Instructions'.

**25. TRASH DISPOSAL**

- 25.1 Trash may be placed aboard support or official boats.

**26. HAUL OUT RESTRICTIONS**

- 26.1 All boats shall be afloat by 1000 on the first day of the event. *[DP]*
- 26.2 Boats shall not be hauled out during the Event except with and according to the terms of prior written permission of the race committee. *[DP]*

**27. DIVING EQUIPMENT AND PLASTIC POOLS**

- 27.1 Underwater breathing apparatus and plastic pools or their equivalent shall not be used around competing boats

between the preparatory signal of the first race and the end of the event. *[DP]*

- 27.2 No person shall undertake any underwater or diving of any kind within Cowes harbour without a valid permit to dive from Cowes Harbour Master or the manager of the marina you wish to dive at. This prohibited activity is legislated under Cowes harbour Commission General Direction 4.4.

**28. PRIZES**

- 28.1 The event prize giving will be held at the Royal Yacht Squadron as soon as possible after the final day's racing and after any protest(s).
- 28.2 Prizes will be awarded for the first, second and third boats in the series for both open and Corinthian divisions.

**29. RISK STATEMENT**

- 29.1 RRS 3 states: "The responsibility for a boat's decision to participate in a race or to continue racing is hers alone."
- 29.2 Sailing is by its nature an unpredictable sport and therefore involves an element of risk. By taking part in the event, each competitor agrees and acknowledges that:
- They are aware of the inherent element of risk involved in the sport and accept responsibility for the exposure of themselves, their crew and their boat to such inherent risk whilst taking part in the event;
  - They are responsible for the safety of themselves, their crew, their boat and their other property whether afloat or ashore;
  - They accept responsibility for any injury, damage or loss to the extent caused by their own actions or omissions;
  - Their boat is in good order, equipped to sail in the event and they are fit to participate;
  - The provision of a race management team, patrol boats, and other officials and volunteers by the event organiser does not relieve them of their own responsibilities;
  - The provision of patrol boat cover is limited to such assistance, particularly in extreme weather conditions, as can be practicably provided in the circumstances;
  - It is their responsibility to familiarise themselves with any risks specific to this venue or this event drawn to their attention in any rules and information produced for the venue or event and to attend any safety briefing held for the event.
  - They are responsible for ensuring that their boat is equipped and seaworthy so as to be able to face extremes of weather; that there is a crew sufficient in number, experience and fitness to withstand such weather; and that the safety equipment is properly maintained, stowed and in date and is familiar to the crew.

**30. INSURANCE**

- 30.1 Each participating boat is required to hold insurance cover and in particular to hold adequate insurance against third party claims of at least £3 million.

**ADDENDUM A: COURSE ILLUSTRATION**

**ADDENDUM B: SOLENT CHARTLET**

**ADDENDUM C: EVENT QR CODE**

ADDENDUM A

**Course Illustrations – Windward Leeward**

**L**

**Course: Leeward finish**

Signal	Mark Rounding Order
<b>L2</b>	Start – 1 – 4s/4p – 1 – Finish
<b>L3</b>	Start – 1 – 4s/4p – 1 – 4s/4p – 1 – Finish
<b>L4</b>	Start – 1 – 4s/4p – 1 – 4s/4p – 1 – 4s/4p – 1 – Finish

**W**

**Course: Windward Finish**

Signal	Mark Rounding Order
<b>W2</b>	Start – 1 – 4s/4p – Finish
<b>W3</b>	Start – 1 – 4s/4p – 1 – 4s/4p – Finish
<b>W4</b>	Start – 1 – 4s/4p – 1 – 4s/4p – 1 – 4s/4p – Finish

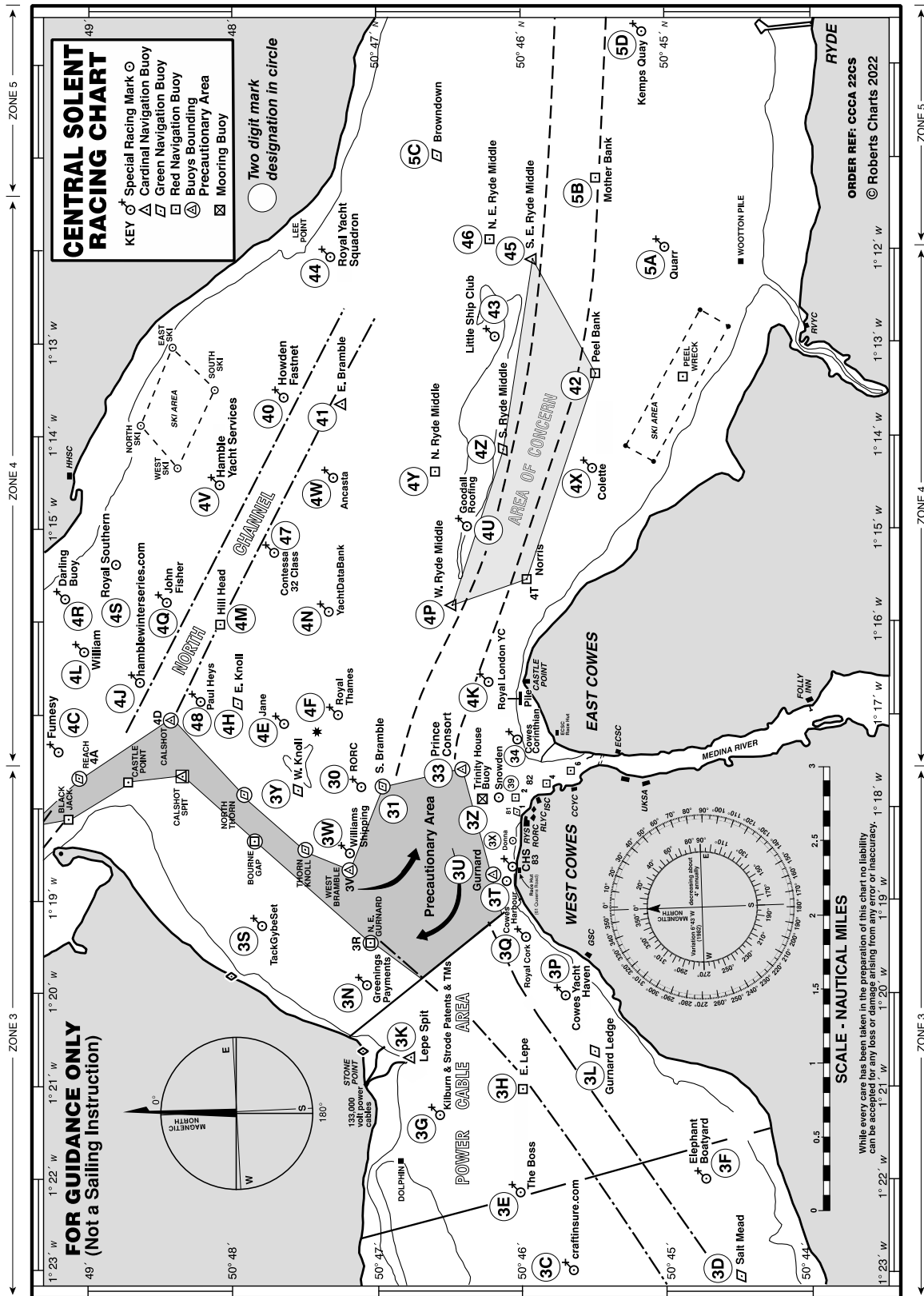
**LA / WA**

**Course: Windward/leeward with offset mark 1a**

Signal	Mark Rounding Order
<b>LA2</b>	Start – 1 – 1a – 4s/4p – 1 – 1a – Finish
<b>LA3</b>	Start – 1 – 1a – 4s/4p – 1 – 1a – 4s/4p – 1 – 1a – Finish
<b>LA4</b>	Start – 1 – 1a – 4s/4p – 1 – 1a – 4s/4p – 1 – 1a – 4s/4p – 1 – 1a – Finish
<b>WA2</b>	Start – 1 – 1a – 4s/4p – Finish
<b>WA3</b>	Start – 1 – 1a – 4s/4p – 1 – 1a – 4s/4p – Finish
<b>WA4</b>	Start – 1 – 1a – 4s/4p – 1 – 1a – 4s/4p – 1 – 1a – 4s/4p – Finish

**ADDENDUM B**

Solent Chartlet to aid boats in locating the committee vessel.



**ADDENDUM C**



## J70 South Coast Champs

WhatsApp group

