



OLD CARTHUSIANS J70 REGATTA 18 JUNE 2023

ORGANISING AUTHORITY ROYAL YACHT SQUADRON

SAILING INSTRUCTIONS

1. RULES

- 1.1 The *event* is governed by the rules as defined in the Racing Rules of Sailing (RRS).

2. COMMUNICATION


- 2.1 The Race Committee will use VHF radio CH 77 for communication with competitors.

3. SCHEDULE

- 3.1 The times shown in the table below are UTC plus 1 hour (British Summer Time - BST). Indicative Tide Times are for High Water (HW) Portsmouth.

DAY HWP (BST)	TIME	WARNING SIGNALS	NOTES
Sun – 18 June HW 1250 – 4.4m	0930		Briefing in RYS and walk to Shepards Wharf.
		1000	Rig boats.
		asap	Sail to Osborne Bay.
		1500	Multiple short races.
			Return to Shepards Wharf.

4. CLASS FLAG

Class Flag ICS "J".	Class Flag 
------------------------	---

5. RACING AREA

- 5.1 Racing will take place in the Solent.

- 5.2 To indicate the general race area a local racing chartlet can be found in Addendum A.

6. COURSES

- 6.1 The courses to be sailed in Osborne Bay will be a windward / leeward configuration as described in Addendum B.
- 6.2 The last races of the day may be a passage race back to the RYS.
- 6.3 The course for the "race back to RYS" will be displayed on the CV using the Solent Two Character Codes in the chartlet in Addendum A.

7. MARKS

- 7.1 With reference to Addendum B, marks 1, 1a, 4s & 4p will be orange inflatable marks.
- 7.2 The starting and finishing mark for windward leeward courses will be between a committee vessel and a white buoy with orange flag.

8. THE START AND FINISH

- 8.1 The start sequence will use RRS 26.
(a) This is 5, 4, 1, start.
- 8.2 To alert boats that a start sequence will soon begin, an Orange Flag will be displayed with multiple sound signals.
- 8.3 The **start line** for windward leeward courses will be between a staff displaying an orange flag on the committee vessel and a white buoy with orange flag.
- 8.4 The **finish line** for windward leeward courses will be between a staff displaying a blue flag on the committee vessel and a white buoy with orange flag for leeward finishes and Mark 1 for windward finishes.
- 8.5 The start line for the **race back to the RYS** will be between a staff displaying an orange flag on the committee vessel and a white buoy with orange flag and the finishing line will be between the RYS Main Mast and an Orange mark, laid 200 metres off the Castle.

9. PENALTY SYSTEM

- 9.1 One-Turn Penalty.

10. SCORING

- 10.1 One (1) race is required to be completed to constitute a series.
- 10.2 All race scores to count.

11. PRIZES

- 11.1 Trophies will be awarded to the first three boats in the series.

12. FURTHER INFORMATION

For further information please contact:

The Royal Yacht Squadron

The Castle

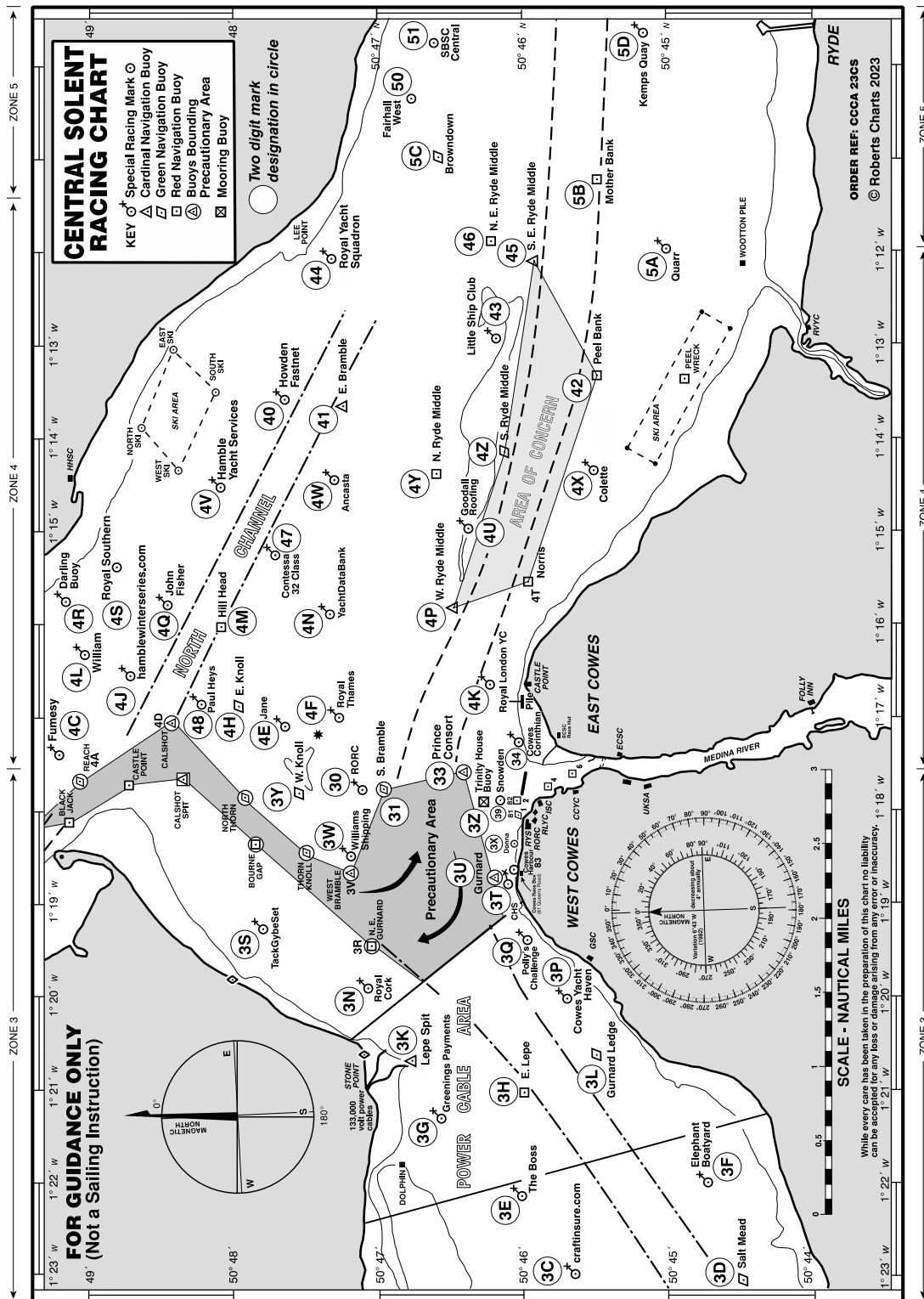
Cowes, UK, PO31 7QT

Tel: +44 1983 292 191

mail@rys.org.uk

ADDENDUM A.

See below a chartlet of the Racing Area showing the Solent Two Character Codes.

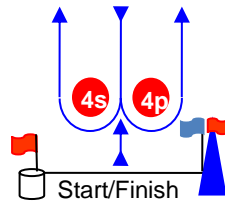
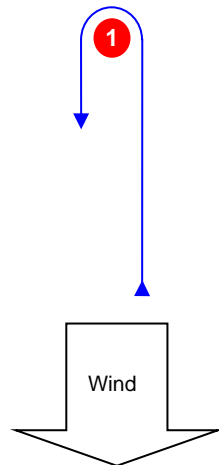


All correspondence should be directed to:

The Royal Yacht Squadron, The Castle, Cowes, UK, PO31 7QT. Tel: 01983 292191, Email: mail@rys.org.uk

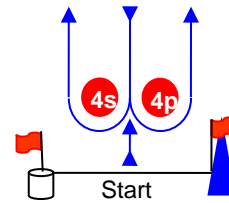
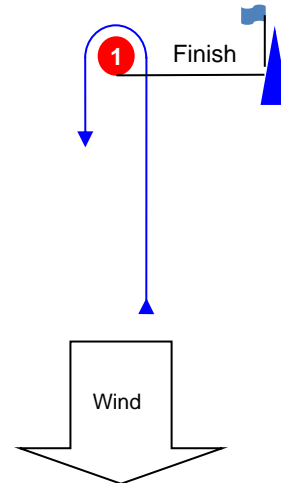
ADDENDUM B

Course Illustrations – Windward Leeward

L**Course: Leeward finish**

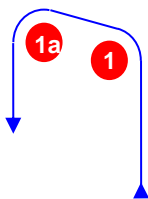
Signal Mark Rounding Order

L1	Start – 1 – Finish
L2	Start – 1 – 4s/4p – 1 – Finish
L3	Start – 1 – 4s/4p – 1 – 4s/4p – 1 – Finish

W**Course: Windward Finish**

Signal Mark Rounding Order

W1	Start – 1 – 4s/4p – Finish
W2	Start – 1 – 4s/4p – 1 – 4s/4p – Finish
W3	Start – 1 – 4s/4p – 1 – 4s/4p – 1 – 4s/4p – Finish

LA / WA**Course: Windward/leeward with offset mark 1a**

Signal Mark Rounding Order

LA1	Start – 1 – 1a – Finish
LA2	Start – 1 – 1a – 4s/4p – 1 – 1a – Finish
LA3	Start – 1 – 1a – 4s/4p – 1 – 1a – 4s/4p – 1 – 1a – Finish
WA1	Start – 1 – 1a – 4s/4p – Finish
WA2	Start – 1 – 1a – 4s/4p – 1 – 1a – 4s/4p – Finish
WA3	Start – 1 – 1a – 4s/4p – 1 – 1a – 4s/4p – 1 – 1a – 4s/4p – Finish