



## QUARTER TON CUP 4 – 6 JUNE 2021

### ORGANIZING AUTHORITY ROYAL YACHT SQUADRON

# SAILING INSTRUCTIONS

*The notation '[DP]' in a rule in the Sailing Instructions means that the penalty for a breach of that rule may, at the discretion of the protest committee, be less than disqualification.*

*The notation '[NP]' in a rule of the Sailing Instructions (SIs) means that a boat may not protest another boat for breaking that rule. This changes RRS 60.1(a).*

#### 1. RULES

- 1.1. The event is governed by the rules as defined in the Racing Rules of Sailing (RRS).
- 1.2. World Sailing Offshore Special Regulations for Inshore Racing (Appendix B) shall apply. [DP]
- 1.3. The Quarter Ton Class Rules.
- 1.4. Parts A, B and C of the IRC Rules shall apply. [DP]
- 1.5. Notices to Mariners for the Ports of Southampton, Portsmouth and Cowes. [DP]
- 1.6. All crews are required to follow all the latest Covid-19 guidance from NHS England and the Government. [DP]
- 1.7. All crews should also follow the latest RYA Guidance on sailing & racing with participants from different households during COVID-19 in England. [DP]

#### 2. CHANGES TO SAILING INSTRUCTIONS

- 2.1. Any change to the Sailing Instructions (SIs) made ashore will be posted by 0900 on the day it will take effect, except that any change to the Schedule of Races (see 6.4) will be posted by 2000 on the day before it will take effect.
- 2.2. Changes to a Sailing Instruction may be made on the water using VHF Ch 05 to communicate with competitors.

#### 3. COMMUNICATIONS WITH COMPETITORS

- 3.1. Notices to competitors will be posted on the Online Official Notice Board (ONB).

- 3.2. The ONB will be online at [www.rys.org.uk](http://www.rys.org.uk). There is no physical ONB.
- 3.3. The Race Office is in the Royal Yacht Squadron (RYS).
- 3.4. The Race Committee intends to broadcast race information and course information on VHF Ch 05.
- 3.5. At 0900 each race day, the Race Committee will broadcast a competitor briefing on VHF Ch 05.
- 3.6. During the briefing, the Race Committee may instruct all competitors to remain in the marina until further notice. If boats are instructed to remain in the marina, all competitors should keep a listening watch on VHF Ch 05 for regular updated reports on the revised start times. This information will also be repeated on the WhatsApp group.
- 3.7. Competitors wishing to communicate with the Race Committee should do so on VHF Ch 77.
- 3.8. The Race Committee intends to announce approximate location of the committee boat at least 1 hour before the first warning signal each day on VHF Ch 05 and this will be repeated on WhatsApp.

#### 4. CODE OF CONDUCT

- 4.1. Competitors and support persons shall comply with reasonable requests from race officials.
- 4.2. Competitors and support persons shall handle or place any equipment or advertising provided by the organizing authority with care, seamanship and in accordance with any instructions for its use and without interfering with its functionality.

#### 5. SIGNALS MADE ASHORE AND AFLOAT

- 5.1. Signals made ashore will be displayed at the RYS Lodge Flagstaff together with a notice on the ONB.
- 5.2. When flag AP is displayed ashore, "1 minute" is replaced by "not less than 45 minutes". This changes Race Signals AP.
- 5.3. To alert boats that a race or sequence of races will begin soon, an orange flag will be displayed on the Committee Vessel with multiple sound signals not less than five (5) minutes before a warning signal is displayed.

#### 6. SCHEDULE OF RACING

- 6.1. The intention of the Race Committee is to run up to twelve (12) races over the three days of the Event.
- 6.2. The Race Committee intends to run no more than four (4) races each day. Additional races may be sailed in order to complete the programme because of weather or other reasons and will be advised by 0900 on the affected day.
- 6.3. On the last day of racing, no Warning Signal will be made after 1530.


Cont.....

## 6.4. Schedule of Races:

DAY HWP (BST)	BRIEFING	FIRST WARNING SIGNAL	NOTES
Fri 4 June HW 0750 3.8m	0900	1025	VHF and WhatsApp Briefing. 1 <sup>st</sup> Warning Signal. Subsequent races asap after each race finish.
Sat 5 June HW 0850 3.8m	0900	1025	VHF and WhatsApp Briefing. 1 <sup>st</sup> Warning Signal. Subsequent races asap after each race finish.
Sun 6 June HW 0940 3.9m	0900	1025	VHF and WhatsApp Briefing. 1 <sup>st</sup> Warning Signal. Subsequent races asap after each race finish.  Prizegiving in the RYS Pavilion ASAP after racing.

## 7. CLASS FLAGS

7.1. The class flag will be:

Class Flag	ICOS Q 
---------------	---

## 8. RACING AREA

- 8.1. Racing will take place from a Committee Vessel (CV) in the Solent. The approximate location of the Committee Vessel will be announced on VHF Channel 05 using the Solent Two Character Codes and on WhatsApp.
- 8.2. A chartlet showing the Solent Two Character Codes can be found in Addendum B of these SIs.

## 9. COURSES

- 9.1. The format for racing will be Windward/Leeward Courses. See Addendum A.
- 9.2. Course letters and number of laps for Windward / Leeward courses will be displayed on the CV.
- 9.3. The diagrams in Addendum A of these SIs show the courses, the order in which the marks are to be passed and the side on which each mark is to be left.
- 9.4. No later than the Warning Signal, the CV will display the approximate compass bearing from the CV of the first leg and the course to be sailed.

## 10. MARKS

- 10.1. With reference to Addendum A, marks 1, 1a, 4s & 4p will be orange inflatable marks.

- 10.2. With reference to gate marks 4p/4s, if only one gate mark is in position, that mark shall be rounded to port.
- 10.3. The starting marks will be a Committee Vessel and a black inflatable mark.
- 10.4. The finishing marks will be a Committee Vessel and a black inflatable mark.
- 10.5. When a new mark has been laid to change the next leg of a W/L course it will be a black inflatable mark. If the new mark is a windward mark, then the offset mark 1a will not be laid and is no longer part of the course.

## 11. OBSTRUCTIONS

- 11.1. Boats shall not anchor or kedge in the Cowes Harbour fairway or within the area denoting power cables and gas pipes between Stone Point and Gurnard Bay, as shown on Admiralty Chart 2040, or within the mining ground area north east of Ryde Sand.
- 11.2. All boats shall comply with Associated British Ports Notice to Mariners No 09 of 2021 giving details of a Precautionary Area and Moving Prohibited Zone (MPZ). The MPZ shall rank as an obstruction for the purposes of RRS 19 and 20.
- 11.3. Whilst racing, boats shall pass to the north of the Cowes Breakwater.

## 12. THE START

- 12.1. Races will be started by using RRS 26.
- 12.2. The starting line will be between a staff displaying an orange flag on the Committee Vessel at the starboard end and the course side of the port-end starting mark.
- 12.3. If any part of a boat's hull is on the course side of the starting line at her starting signal and she is identified, the Race Committee will attempt to broadcast her sail number on VHF CH 05 after Flag X has been displayed, but not sooner than 30 seconds after the start. Delay or failure to do so is not grounds for redress. This changes RRS 62.1(a).

## 13. CHANGE OF THE NEXT LEG OF THE COURSE

- 13.1. When a change the next leg of the course has been signaled, the Race Committee will lay a new mark (or move the finishing line) and remove the original mark as soon as practicable. When in a subsequent change a new mark is replaced, it will be replaced by an original mark.
- 13.2. The position of any mark(s) may be adjusted by up to plus or minus 10 degrees relative to previous location and up to approximately 200 metres to windward or leeward without signaling Flag C, a direction signal, a length signal or a sound signal. This changes RRS 33.

## 14. THE FINISH

- 14.1. The finish line will be between a staff displaying a blue flag on the Committee Signal Vessel and the course side of the port-end finishing mark.

## 15. PENALTY SYSTEM

- 15.1. RRS 44.1 is changed so that a boat may take a One-Turn Penalty (1 tack and 1 gybe) when she may have broken one or more rules of Part 2 or rule 31 in an incident while racing.

**16. TIME LIMITS**

- 16.1. The target time for each race is 50 minutes.
- 16.2. The following time limits will apply.
- Mark 1 Time Limit. The time limit for the first boat to pass Mark 1 is 30 minutes.
  - Race Time Limit. The time limit for the first boat to sail the course and finish is 90 minutes.
  - Finishing Window. The time limit for boats to finish after the first boat sails the course and finishes is 30 minutes.
- 16.3. If no boat has passed Mark 1 within the Mark 1 Time Limit, or if no boat has finished within the Race Time Limit, the race shall be abandoned.
- 16.4. Boats still racing more than 15 minutes after the first yacht finishes shall be awarded the points for their places behind the last yacht which has finished the race within this time, based on their observed positions on the course.

**17. HEARING REQUESTS**

- 17.1. The protest limit is 90 minutes after the last boat has finished the last race of the day or the Race Committee signals no more racing today, whichever is later.
- 17.2. Hearing forms will be available at the Race Office. Protest and requests for redress or reopening shall be delivered to the Race Office within the protest time limit. Contact mobile phone numbers should be included on the protest form.
- 17.3. Notices will be posted no later than 30 minutes after the protest time limit to inform competitors of the hearings in which they are parties or named as witnesses. Hearings will be held in the protest room located at the RYS.
- 17.4. On the last scheduled day of racing a request for redress based on a protest committee decision shall be delivered no later than 30 minutes after the decision was posted. This changes RRS 62.2.

**18. SCORING**

- 18.1. Three races shall be completed to constitute a series.
- 18.2. When three (3) to five (5) races have been completed a boat's series score shall be the total of all her race scores.
- 18.3. When six (6) or more races have been completed, a boat's score will be the total of her race scores excluding her worst score.

**19. SAFETY REGULATIONS**

- 19.1. A boat that retires from a race shall notify the Race Committee as soon as possible on VHF Ch 77 or by hailing an official Event Support Boat or rib. *[DP]*

**20. REPLACEMENT OF CREW OR EQUIPMENT**

- 20.1. Substitution of competitors is not allowed without the prior written permission of the Race Committee.
- 20.2. Substitution of damaged or lost equipment is not allowed unless authorised in writing by the Race Committee. Requests for substitution shall be made to the committee at the first reasonable opportunity, which may be after the race.

**21. EQUIPMENT AND MEASUREMENT CHECKS**

- 21.1. A boat or equipment may be inspected at any time for compliance with the Class Rules and Sailing Instructions.

**22. SUPPLIED BOATS**

- 22.1. Does not apply.

**23. OFFICIAL VESSELS**

- 23.1. The Committee Vessel (Signal Vessel) will be a large motor launch. Call sign Quarter Ton Cup Committee.
- 23.2. Mark laying vessels will be RYS Ribs.

**24. SUPPORT TEAMS**

- 24.1. All support vessels shall carry marine VHF radios and comply with RRS 37 'Search and Rescue Instructions'. *[DP]*
- 24.2. Team leaders, coaches and other support personnel must stay outside areas where boats are racing from the time of the preparatory signal for each start thereafter until all boats have finished or retired or the Race Committee signals a postponement, general recall or abandonment. *[DP]*

**25. TRASH DISPOSAL**

- 25.1. Trash may be placed aboard official or support vessels.

**26. BERTHING**

- 26.1. Event berthing is the responsibility of each boat and is not included in the entry fee. Visiting boats may contact [Cowes Yacht Haven](#) or [Shepards Wharf Marina](#) for berthing reservations.

**27. HAUL OUT RESTRICTIONS**

- 27.1. All boats shall be afloat by 1800 the day before the first race. *[DP]*
- 27.2. Boats shall not be hauled out during the Event except with and according to the terms of prior written permission of the race committee. *[DP]*

**28. DIVING EQUIPMENT AND PLASTIC POOLS**

- 28.1. Underwater breathing apparatus and plastic pools or their equivalent shall not be used around competing boats between the preparatory signal of the first race and the end of the event. *[DP]*
- 28.2. Keelboats shall not be cleaned below the waterline by any means between the preparatory signal of the first race and the end of the event. *[DP]*

**29. PRIZES**

- 29.1. The event prize giving will be held at the Royal Yacht Squadron as soon as possible after the final day's racing and after any protest(s).
- 29.2. Prizes will be awarded as follows.
- Quarter Ton Cup to the winner of the Open Division.

- (b) Corinthian Trophy to the winner of the Corinthian Division.
- (c) Roger Swinney Trophy for the highest placed boat that wins neither the Quarter Ton Cup nor the Corinthian Trophy and has a rating of lower than \*\*\*\* (see NB below).
- (d) Other prizes will be awarded including: a prize to the boat with the highest combined age of the crew, lowest combined age of the crew, oldest bowman, and Concours d'Elegance (as judged by the Race Committee).

NB \*\* The maximum rating for the Roger Swinney Trophy will be set once the entries, and their ratings, are available. This will be posted on the ONB.

### 30. RISK STATEMENT

- 30.1. Rule 3 of the Racing Rules of Sailing states: "The responsibility for a boat's decision to participate in a race or to continue racing is hers alone."
- 30.2. Sailing is by its nature an unpredictable sport and therefore involves an element of risk. By taking part in the event, each competitor agrees and acknowledges that:
  - (a) They are aware of the inherent element of risk involved in the sport and accept responsibility for the exposure of themselves, their crew and their boat to such inherent risk whilst taking part in the event;
  - (b) They are responsible for the safety of themselves, their crew, their boat and their other property whether afloat or ashore;
  - (c) They accept responsibility for any injury, damage or loss to the extent caused by their own actions or omissions;
  - (d) Their boat is in good order, equipped to sail in the event and they are fit to participate;
  - (e) The provision of a race management team, patrol boats, and other officials and volunteers by the event organiser does not relieve them of their own responsibilities;
  - (f) The provision of patrol boat cover is limited to such assistance, particularly in extreme weather conditions, as can be practically provided in the circumstances;
  - (g) It is their responsibility to familiarise themselves with any risks specific to this venue or this event drawn to their attention in any rules and information produced for the venue or event and to attend any competitor or safety briefing held for the event;
  - (h) They are responsible for ensuring that their boat is equipped and seaworthy so as to be able to face extremes of weather; that there is a crew sufficient in number, experience and fitness to withstand such weather; and that the safety equipment is properly maintained, stowed and in date and is familiar to the crew.
- 30.3. **COVID Statement**
  - (a) By taking part in any of the events covered by this Notice of Race, each competitor agrees and acknowledges that they are responsible for complying with any regulations in force from time to time in respect of COVID-19 and for complying with the Royal Yacht Squadron COVID Safe procedures when on site.

- (b) The penalty for a breach of this rule may, at the discretion of the Protest Committee, be less than disqualification. Boats may not protest for breaches of this rule. This changes rule 60.1(a). (DP)

### 31. INSURANCE

- 31.1. Each participating boat is required to hold insurance cover and in particular to hold adequate insurance against third party claims of at least £3 million.

\*\*\*\*\*

**Course Illustrations – Windward Leeward**

**L**

**Course: Leeward finish**

Signal Mark Rounding Order

L2 Start – 1 – 4s/4p – 1 – Finish

L3 Start – 1 – 4s/4p – 1 – 4s/4p – 1 – Finish

L4 Start – 1 – 4s/4p – 1 – 4s/4p – 1 – 4s/4p – 1 – Finish

**W**

**Course: Windward Finish**

Signal Mark Rounding Order

W2 Start – 1 – 4s/4p – Finish

W3 Start – 1 – 4s/4p – 1 – 4s/4p – Finish

W4 Start – 1 – 4s/4p – 1 – 4s/4p – 1 – 4s/4p – Finish

**LA / WA**

**Course: Windward/leeward with offset mark 1a**

Signal Mark Rounding Order

LA2 Start – 1 – 1a – 4s/4p – 1 – 1a – Finish

LA3 Start – 1 – 1a – 4s/4p – 1 – 1a – 4s/4p – 1 – 1a – Finish

LA4 Start – 1 – 1a – 4s/4p – 1 – 1a – 4s/4p – 1 – 1a – 4s/4p – 1 – 1a – Finish

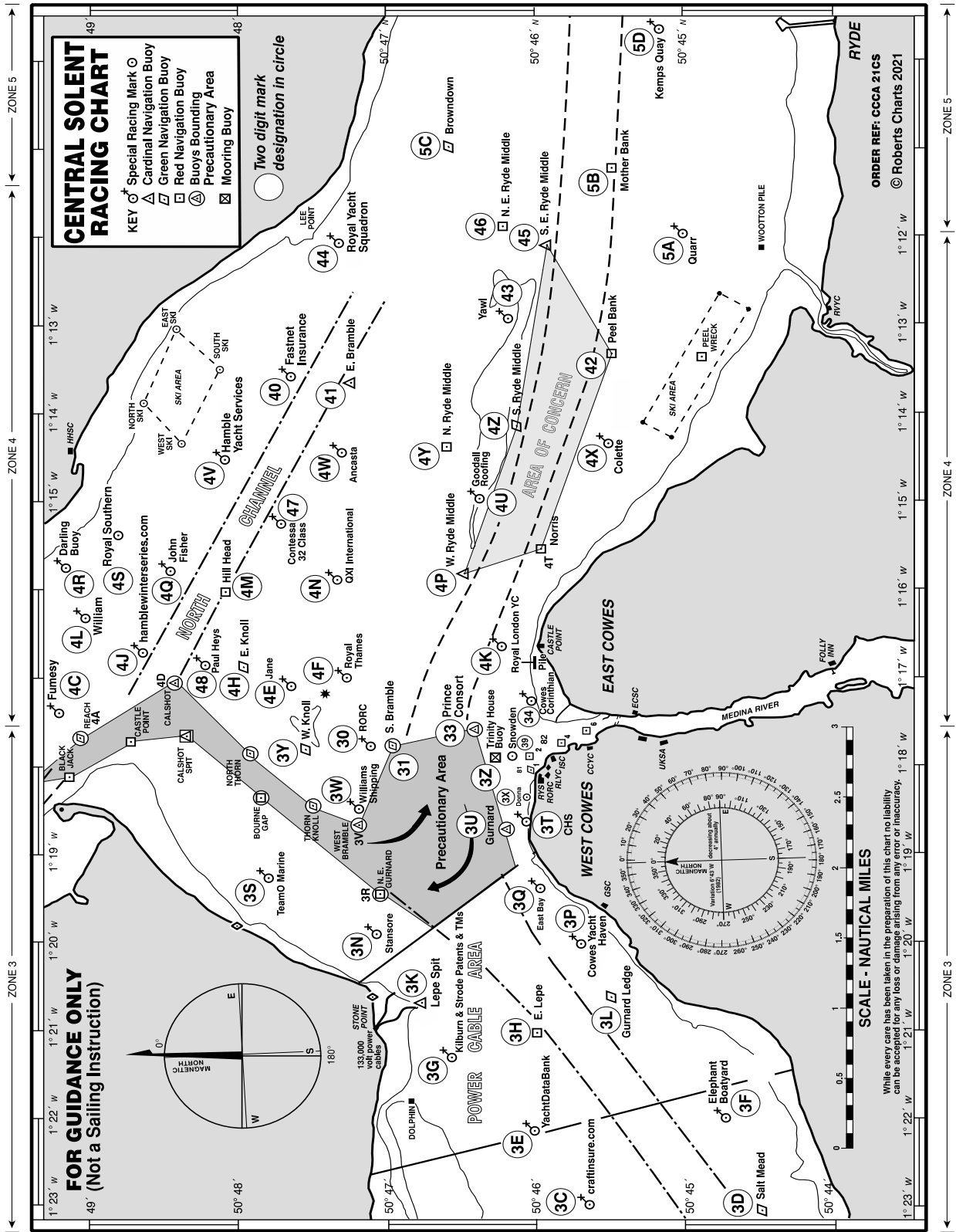
WA2 Start – 1 – 1a – 4s/4p – Finish

WA3 Start – 1 – 1a – 4s/4p – 1 – 1a – 4s/4p – Finish

WA4 Start – 1 – 1a – 4s/4p – 1 – 1a – 4s/4p – 1 – 1a – 4s/4p – Finish

**ADDENDUM B**

**Solent Chartlet and Two Character Solent Mark Codes**



## ADDENDUM C

We have set up an official WhatsApp group for receiving general information from the Race Office. To join the WhatsApp group please use the below QR Code:



### Instructions on using QR codes:

- For Apple phones: Please open your camera app and point it at the QR code and then follow the link it displays on your screen.
- For Android phones: Please obtain a barcode scanning app from the Google Play Store such as "Barcode Scanner", open the barcode scanning app and point it at the QR code and then follow the link it displays on your screen.